



NOTICE OF PUBLIC MEETING AND EXECUTIVE SESSION  
PINAL COUNTY BOARD OF SUPERVISORS  
AGENDA FOR SPECIAL SESSION  
Wednesday, August 17, 2022

9:30 AM - CALL TO ORDER

PINAL COUNTY ADMINISTRATIVE COMPLEX  
BOARD OF SUPERVISORS HEARING ROOM  
135 N. PINAL STREET  
FLORENCE, AZ 85132

---

BUSINESS BEFORE THE BOARD

(Consideration/Approval/Disapproval of the following:)

- (1) Discussion/approval/disapproval regarding the 2022 Pinal County Primary Election handling, follow up by staff, possible scope of After-Action Report and Administrative Review, process moving forward for the 2022 General Election, and other recommendations or concerns for future action. **Public Comment** shall follow staff discussion. (Virginia Ross/Himanshu Patel)
- (2) Discussion/approval/disapproval of the creation of new job classifications for the Elections Department and Recorder's Office. (MaryEllen Sheppard)

ADJOURNMENT

**(SUPPORTING DOCUMENTS ARE AVAILABLE AT THE CLERK OF THE BOARD OF SUPERVISORS' OFFICE AND AT <https://pinal.novusagenda.com/AgendaPublic/>)**

NOTE: One or more members of the Board may participate in this meeting by telephonic conference call.

The Board may go into Executive Session for the purpose of obtaining legal advice from the County's Attorney(s) on any of the above agenda items pursuant to A.R.S. 38-431.03(A)(3).

In accordance with the requirement of Title II of the Americans with Disabilities Act (ADA), the Pinal County Board of Supervisors and Pinal County Board of Directors do not discriminate against qualified individuals with disabilities admission to public meetings. If you need accommodation for a meeting, please contact the Clerk of the Board Office at (520) 866-6068, at least (3) three business days prior to the meeting (not including weekends or holidays) so that your request may be accommodated.

Meeting Notice of Posting



AGENDA ITEM

August 17, 2022 ADMINISTRATION BUILDING A  
FLORENCE, ARIZONA

---

**REQUESTED BY:**

**Funds #:**

**Dept. #:**

**Dept. Name:**

**Director:**

---

**BRIEF DESCRIPTION OF AGENDA ITEM AND REQUESTED BOARD ACTION:**

Discussion/approval/disapproval regarding the 2022 Pinal County Primary Election handling, follow up by staff, possible scope of After-Action Report and Administrative Review, process moving forward for the 2022 General Election, and other recommendations or concerns for future action. **Public Comment** shall follow staff discussion. (Virginia Ross/Himanshu Patel)

---

**BRIEF DESCRIPTION OF THE FISCAL CONSIDERATIONS AND/OR EXPECTED FISCAL IMPACT OF THIS AGENDA ITEM:**

---

**BRIEF DESCRIPTION OF THE EXPECTED PERFORMANCE IMPACT OF THIS AGENDA ITEM:**

---

**MOTION:**

---

History	Who	Approval
Time		

---

**ATTACHMENTS:**

Click to download
<input type="checkbox"/> <a href="#">2021-2022 Master Elections Calendar Internal</a>
<input type="checkbox"/> <a href="#">2022 Election Calendar FINAL (Rev. 2021_09_27) SOS</a>
<input type="checkbox"/> <a href="#">Elections Org Chart July2022</a>
<input type="checkbox"/> <a href="#">Recorder Elections Org Chart Draft</a>

6/3/2022	PRIM	-60	ELEC		Begin recruiting troubleshooters, if applicable		
6/3/2022	PRIM	-60	ELEC		Hire early board and receiving board members		
6/3/2022	PRIM	-60	ELEC		Complete election programming, including AutoMARKs, tabulators, and ERM		
6/3/2022	PRIM	-60	ELEC		Accept lists of nominees for Special Election Boards from the county Party Chairmen and being appointment Special Election Boards for Novem 8, 2022 General Election	16-549(A)	
6/6/2022	PRIM	-57	ELEC		Last day (by 5:00 p.m.) for candidates and jurisdictions to provide notice of any typographical errors on the ballots by PCED		
6/7/2022	PRIM	-56	ELEC		Schedule and post notice of L&A testing in newspaper of record		
6/11/2022	NOV	-150	ELEC		Call of Election - special districts, cities/towns, school districts and notify PCED of intent to hold election, by 5 p.m.	16-225/226	
6/11/2022	NOV	-150	ELEC		Candidate filing begins - nonpartisan (Independent) candidate Nomination Petition and Papers for General Elec (write-ins?)	16-311(B) 16-204	
6/13/2022	PRIM	-50	ELEC		Complete internal proofreading of ballots		
6/13/2022	PRIM	-50	ELEC		Recommended deadline to prepare materials and supplies for instruction classes for Precinct Election Boards	16-532	
6/13/2022	PRIM	-50	ELEC		.	16-532	
6/13/2022	PRIM	-50	ELEC		Sample ballot art to Runbeck		
6/15/2022	PRIM	-48	ELEC		Ballot faces due to Runbeck		
6/15/2022	PRIM	-48	ELEC		Ballot order due to Runbeck		
6/16/2022	PRIM	-47	ELEC		Test ballots to County & SOS from Runbeck		
6/17/2022	PRIM	-46	ELEC		Ballot faces proofs due to PCED from Runbeck		HOLIDAY
6/17/2022	PRIM	-46	ELEC		Ballot faces final approval		
6/18/2022	PRIM	-45	ELEC		Prepare proof of sample ballots and (1) Submit to each County Party Chairman, (2) Mail a copy to each candidate who has properly filed a Nomination Paper.	16-461(A)	WEEKEND
6/18/2022	PRIM	-45	ELEC		UOCAVA ballots mailed out	16-543(A)	WEEKEND
6/18/2022	PRIM	-45	ELEC		Update PCED website		
6/18/2022	PRIM	-45	ELEC		Poll worker instruction may begin, if applicable	16-532(A)	WEEKEND
6/18/2022	PRIM	-45	ELEC		Set up poll locations & poll workers Agenda items for early July BOS meeting on or before July 13 -- deadline 10 days before that		WEEKEND
6/23/2022	PRIM	-40	ELEC		Sample ballot extract to Runbeck	16-461(B)©	
6/23/2022	PRIM	-40	ELEC		Last day to file as a write-in candidate (before 5:00 p.m.) for an election that can not be canceled	16-312(B)(1)	
6/23/2022	PRIM	-40	ELEC		Complete delivery schedule with troubleshooter assignments		
6/23/2022	PRIM	-40	ELEC		Last day to accept suggestions for County Party Chairmen on changes to sample ballot due to error or omission	16-461(B)	
6/24/2022	PRIM	-39	ELEC		Deliver notice of Write-in Candidates who have filed Nomination Papers	16-312(E )	
6/24/2022	PRIM	-39	ELEC		Prepare write-in candidate signs	16-312(C )(E )	
6/28/2022	PRIM	-35	JURIS		Mailing of Publicity Pamphlets	35-454(A)(1)	
6/29/2022	PRIM	-34	ELEC		Early voting begins date(-27) -7= begin Logic & Accuracy Tests before early voting	16-449	
6/30/2022	PRIM	-33	ELEC		Print early ballots and deliver to County Recorder	16-503 16-545(B)(1)	
6/30/2022	PRIM	-33	ELEC		Print instructions and envelopes needed for early voting for August 2 Primary election	16-547(C )	
7/1/2022			ELEC		Begin filing 2Q Campaign Finance Report covering 4/1/22 to 6/30/22, PAC, Political Party	16-927(A)(1)	
7/1/2022			ELEC		Begin filing 2Q Campaign Finance Report covering 5/1/22 to 6/30/22, Candidates	16-927(A)(2)(b)&(B)	
7/1/2022	PRIM	-32	ELEC		Counter/replacement ballots due from Runbeck	16-503 16-545(B)(1)	
7/1/2022	PRIM	-32	ELEC		Recommended date to begin accepting political party election observer lists submitted by county party chairmen for Aug 2 Prim	16-590	
7/1/2022	PRIM	-32	ELEC		Designate locations for Central Counting Place Boards, Precinct Boards, Early Boards, Data Processing Boards and Receiving Site Boards	Procedures Manual	
7/3/2022	PRIM	-30	ELEC		Submit polling places to BOS for approval, if applicable		WEEKEND
7/3/2022	PRIM	-30	ELEC		Submit board workers to BOS for approval, if applicable		WEEKEND
7/3/2022	PRIM	-30	ELEC		Submit agenda placeholder for Canvass (only if county or school district contests on ballot)		WEEKEND
7/4/2022	PRIM	-29	ELEC		Last day to register to vote <b>(accepted through 7/6/2022 11:59 pm due to HOLIDAY)</b>	16-120(A)	HOLIDAY
7/4/2022	PRIM	-29	REC		Begin compiling county-provided July 1 Voter Reg Report	16-168(G)(1)(c )	HOLIDAY
7/4/2022	PRIM	-29	ELEC		recommended deadline for designating locations of receiving sites, Central Count, Computer Center and Early Processing	16-552	HOLIDAY
7/5/2022	PRIM	-28	ELEC		Last day to complete internal L&A testing		
7/5/2022	PRIM	-28	ELEC		Begin stocking cages, if applicable		
7/6/2022	PRIM	-27	REC		Early voting begins for August Primary	16-542(C )	
7/6/2022	PRIM	-27	REC		Mail early ballots for August 2 Primary to PEVL and one-time requests	16-544(F )	
7/11/2022	NOV	-120	ELEC		Begin/confirm polling places if needed		
7/11/2022	NOV	-120	ELEC		Begin poll worker recruitment if needed		
7/11/2022	NOV	-120	ELEC		Notify Runbeck of election and whether ballot by mail or traditional		
7/11/2022	NOV	-120	ELEC		Notify Scytl of elections		

7/11/2022	NOV	-120	ELEC		Check with Gila, Maricopa, and Pima Counties regarding cross-county elections		
7/11/2022	NOV	-120	ELEC		Last day for regular candidate filing (special taxing districts only)		
7/12/2022	PRIM	-21	ELEC		Input voter registration totals into ERM		
7/12/2022	PRIM	-21	ELEC		Prepare Central Count Board forms		
7/13/2022	PRIM	-20	ELEC		Designate polling places (except for special district and mail ballot elections)	16-422(B)	
7/13/2022	PRIM	-20	ELEC		Appoint all election boards	16-531 16-535 16-551	
7/15/2022			ELEC		Deadline for 2Q Campaign Finance Report covering 4/1/22 to 6/30/22, PAC, Political Party	16-927(A)(1)	
7/15/2022			ELEC		Deadline for 2Q Campaign Finance Report covering 5/1/22 to 6/30/22, Candidate	16-927(A)(2)(b)&(B)	
7/15/2022	PRIM	-18	ELEC		Recommended deadline to outline polling place support plan for Primary Election Day		
7/16/2022	PRIM	-17	ELEC		File database program & certification letter with Secretary of State	16-445(A)	WEEKEND
7/16/2022	PRIM	-17	ELEC		Complete ENR programming and conduct test		
7/16/2022	PRIM	-17	ELEC		SOS conducts L & A testing between now and election - <b>is it scheduled????</b>	16-449(A)	
7/17/2022		-16	ELEC		Begin filing Pre-Primary Campaign Finance Report covering 7/1/22 to 7/16/2022, PAC, Political Party	16-927(A)(2)(a)	WEEKEND
7/17/2022		-16	ELEC		Begin filing Pre-Primary Campaign Finance Report covering 7/1/22 to 7/16/2022, Candidates	16-927(A)(2)(a)	WEEKEND
7/19/2022	PRIM	-14	ELEC		Contact IT re live feed ON -Link to Live Feed (2 weeks before election)	16-550(B)	
7/19/2022	PRIM	-14	ELEC		Tabulation of ballots may begin two weeks before election day (Sequester 2% of precincts and 1% or 5000 early ballots (whichever is less) for hand count)	16-550(B)	
7/19/2022	PRIM	-14	ELEC		Mail notice to county party Chairmen as to time and place when voting devices can be inspected	16-447(B)	
7/21/2022	NOV	-110	ELEC		Deadline for filing challenges to Candidate Nonpartisan (Independent) Nomination Petitions for General by 5:00 pm	16-351(A)	
7/22/2022	PRIM	-11	REC		Mail Sample ballots	16-461(D)	
7/22/2022	PRIM	-11	ELEC		Last day to request a ballot by mail	16-542(E )	
7/22/2022	PRIM	-11	REC		Deadline for accepting requests for ballot-by-mail	16-542(E )	
7/22/2022	PRIM	-11	ELEC		Mail Sample Ballots	16-461(D)	
7/22/2022	PRIM	-11	REC		Deadline for accepting requests for assistance by Special Election Board due to "continuing" illness or disability	16-549C ))	
7/22/2022	PRIM	-11	REC		Begin for accepting requests for assistance by Special Election Board due to "unanticipated" illness or disability	16-549(D)	
7/23/2022	PRIM	-10	ELEC		Complete stocking of cages, if applicable		WEEKEND
7/23/2022	PRIM	-10	REC		Prepare official precinct registers (handled by epoll book)	16-168(A)	WEEKEND
7/23/2022	PRIM	-10	REC		Provide inactive voter list to each precinct on our before Election Day (handled by epoll book)	16-583(A)	WEEKEND
7/23/2022		-10	ELEC		Deadline for Pre-Primary Campaign Finance Report covering 7/1/22 to 7/16/2022, PAC, Political Party	16-927(A)(2)(a)&(B)	WEEKEND
7/23/2022		-10	ELEC		Deadline for Pre-Primary Campaign Finance Report covering 7/1/22 to 7/16/2022, Candidates	16-927(A)(2)(a)&(B)	WEEKEND
7/25/2022	PRIM	-8	ELEC		Complete tabulation contingency plans	EPM	
7/26/2022	PRIM	-7	ELEC		Suggested last day for voters to mail back ballots		
7/26/2022	PRIM	-7	ELEC		Deadline for political parties to provide names of persons participating in hand county (5pm)	16-602(B)(7)	
7/26/2022	PRIM	-7	ELEC		Reserve fleet vehicles for staff, if applicable		
7/26/2022	PRIM	-7	ELEC		Complete packing troubleshooter bags, if applicable		
7/26/2022	PRIM	-7	ELEC		Complete packing inspectors envelopes, if applicable	16-509	
7/26/2022	PRIM	-7	ELEC		Make contact with all polling place representatives to confirm details re delivery, Election Day, and retrieval of cages		
7/26/2022	PRIM	-7	ELEC		Check with all inspectors and ensure that polling place keys have been picked up and that election board contact info has been distributed		
7/26/2022		-7	CCEC		End of CCEC Qualifying Period for 2022 Election, covers 8/1/2021 to 7/26/2022	16-961(B)(3)	
7/27/2022	PRIM	-6	ELEC		Deadline for officer in charge of elections to notify political parties of shortage in number of persons participating in hand count (9am)	16-602(B)(7)	
7/28/2022	PRIM	-5	ELEC		Deadline for political parties to provide sufficient number of additional persons to participate in hand count (5 pm)	16-602(B)(7)	
7/29/2022	PRIM	-4	ELEC		Deadline for UOCAVA voter's recently discharged or separated from employment to register to vote in the Primary (5pm)	16-103(D)	
7/29/2022	PRIM	-4	ELEC		Deadline to vote early In-person by 5 pm	16-542-(E )	
7/29/2022	PRIM	-4	ELEC		Begin emergency early voting in a manner prescribed by BOS, available to electors who experience an emergency between 5 pm on 7/29/22 and 5 pm on 8/1/2022 that would prevent them from voting at the polls	16-542-(H)	
7/31/2022	NOV	-100	ELEC		Review Emergency Plan and update contact information		WEEKEND
7/31/2022	PRIM	-2	ELEC		Deliver cages with all ballot supplies to polling locations and their Inspectors, ballots, qualified write-ins list	16-509 16-404 16-405 16-447 16-511	WEEKEND
8/1/2022	PRIM	-1	ELEC		Deadline for accepting requests for assistance by Special Election Board due to "unanticipated" illness or Disability	16-549(D)	
8/1/2022	PRIM	-1	ELEC		Provide updated list of early voters to inspectors (handled by epoll books)	16-542(G)	
8/2/2022			CCEC		End of CCEC Primary Election Period	16-961(B)(4)	
8/2/2022	PRIM	0	ELEC		<b>AUGUST 2022 PRIMARY ELECTION DAY</b>	<b>16-204(B) 16-225</b>	
8/2/2022	PRIM	0	ELEC		Deadline for UOCAVA voters to register to vote for the Primary Election (and to vote) (7pm)	16-103(C )	



8/3/2022			CCEC		Begin CCEC Qualifying Period for 2022 General	16-961(B)(5)	
8/3/2022			CCEC		CCEC payment to qualified participating candidates	16-951(C)	
8/3/2022			CCEC		CCEC candidates to return monies above sufficient amount to pay unpaid bills during Primary Election Period	16-953(A)	
8/3/2022	PRIM	1	ELEC		Provide any provisional ballots to Recorder's Office		
8/3/2022	PRIM	1	ELEC		Provide all dropped off mail ballots to Early Voting		
8/3/2022	PRIM	1	ELEC		Check all cages, troubleshooter bags, and other areas for any ballots		
8/3/2022	PRIM	1	ELEC		Begin conducting hand count, only if federal/state contests/ballot measures with 24 hours of polls closing 2% of precincts, 1% of 5000 (whichever is less early ballots)	16-602( I ) 16-602(B)(1) EPM 16-602(F)	
8/5/2022	PRIM	3	ELEC		Last day for conditional provisional voters to present ID, if applicable		
8/7/2022	NOV	-93	REC		Begin accepting requests for early ballots for 11/8/22 UOCAVA and protected voters can request ballots before this date	16-542(A)(B) 16-153	WEEKEND
8/7/2022	NOV	-93	REC		Begin accepting requests for assistance by Special Election Board due to "continuing" illness	16-549	WEEKEND
8/7/2022	PRIM	5	ELEC		Last day to verify and process for counting Provisional Ballots (5 business days) also 16-579(A)(2) 16-550(A)	16-584(D) 16-135(D)	
8/8/2022	PRIM	6	ELEC		Deadline to hear early ballot challenges (by 5 pm)	16-552(E)	
8/8/2022	PRIM	6	ELEC		First day to canvass jurisdictional election returns and issue Letter of Nomination and Certificates of Election	16-642(A) 16-645(A)	
8/9/2022	PRIM	7	ELEC		Audit all unused ballots returned from polling places, if applicable		
8/9/2022	PRIM	7	ELEC		Complete payroll grid for poll workers		
8/10/2022	NOV	-90	ELEC		Last day for Notice of Election to be published & posted for nonpartisan elections	16-227	
8/10/2022	NOV	-90	ELEC		Accept lists submitted by party chairmen of Election Board nominees for 11/8/2022 General Election ???	16-531(A)	
8/10/2022	NOV	-90	ELEC		Publicity pamphlet language provided, incl pro/con arguments - 300 words or less (if applicable)	19-141(C)	
8/10/2022	NOV	-90	ELEC		Publicity pamphlet language provided, incl pro/con arguments - 300 words or less (if applicable)	19-141(C)	
8/10/2022	NOV	-90	ELEC		Begin accepting retention paperwork for judicial officers of Superior Courts	Const Art. VI § 38A	
8/10/2022	NOV	-90	ELEC		Runbeck planning notebook to PCED		
8/12/2022	PRIM	10	ELEC		Last day to canvass jurisdictional election returns and issue Letter of Nomination and Certificates of Election	16-642(A) 16-645(A)(B)	
8/12/2022	PRIM	10	ELEC		Deliver canvass to SOS	16-645(B)	
8/16/2022	PRIM	14	ELEC		Contact IT re live feed OFF -Remove link to Live Feed (2 weeks after election)	16-550(B)	
8/19/2022	NOV	-81	ELEC		Planning notebook returned to Runbeck with changes noted		
8/20/2022	NOV	-80	ELEC		Post polling places on website		WEEKEND
8/20/2022	NOV	-80	ELEC		Complete election setup in AVID		WEEKEND
8/24/2022	NOV	-76	ELEC		Last day to file as a write-in candidate (before 5:00 p.m.) for an election that can be canceled	16-312(B)(2)	
8/25/2022	NOV	-75	ELEC		Recommended deadline to schedule poll workers classes for 11/2/2022 precinct boards	16-532	
8/25/2022	NOV	-75	ELEC		First day BOS can cancel special district election where # of candidates <= # of open seats	16-410(A)	
8/25/2022	NOV	-75	ELEC		Last day (by 5:00 p.m.) to file candidate challenges	16-351(A)	
8/25/2022	NOV	-75	REC		Deadline for County Recorders to verify initiative petition signatures and provide certified results to SOS	19-121.02	
8/30/2022	NOV	-70	CCEC		Deadline for participating candidate to file Application to Receive Funds and Qualifying Contributions Report to SOS	16-950(B)	
9/1/2022	NOV		CCEC		CCEC candidates pay uncontested/unpaid bills from Primary	16-953(C)	
9/4/2022	NOV	-65	ELEC		??? Where is ballot proofs to candidates?		WEEKEND
9/9/2022	NOV	-60	ELEC		Begin recruiting troubleshooters, if applicable		
9/9/2022	NOV	-60	ELEC		Accept list of nominees for Special Election Boards from county party chairmen and begin appointing Special Election Boards	16-549(A)	
9/9/2022	NOV	-60	ELEC		Hire early board and receiving board members	16-549(A)	
9/9/2022	NOV	-60	ELEC		Deadline to accept retention paperwork for judicial officers of Superior Court	Const Art VI § 38(A)	
9/9/2022	NOV	-60	ELEC		Complete election programming, including AutoMARKs, tabulators, and ERM		
9/12/2022	NOV	-57	ELEC		Last day (by 5:00 p.m.) for candidates and jurisdictions to provide notice of any typographical errors on the ballots by PCED		
9/12/2022	NOV	-57	ELEC		Complete internal proofreading of ballots		
9/13/2022	NOV	-56	ELEC		Ballot faces due to Runbeck		
9/13/2022	NOV	-56	ELEC		Ballot order due to Runbeck		
9/13/2022	NOV	-56	ELEC		Schedule and post notice of L&A testing in newspaper of record		
9/15/2022	NOV	-54	ELEC		Ballot faces proofs due to PCED from Runbeck		
9/15/2022		-180	ELEC		180 day notice for March 14, 2023 Election (new calendar not yet made for this election as of 3/11/2021)	16-205	
9/16/2022	NOV	-53	ELEC		Ballot faces final approval ??? (from who? Internal Programmer Testing???)		
9/19/2022	NOV	-50	ELEC		Recommended deadline to prepare materials and supplies for instruction classes for Precinct Election Boards	16-532	
9/19/2022	NOV	-50	ELEC		Recommended deadline to print Instructions and check list for Election Board and Inspectors	16-532	
9/19/2022	NOV	-50	ELEC		Sample ballot art to Runbeck		
9/22/2022	NOV	-47	ELEC		Test ballots to County & SOS from Runbeck		
9/24/2022	NOV	-45	ELEC		Prepare proof of sample ballots and submit to each county party chairman; mail a copy to each candidate whose name did not appear on the Primary election ballot	16-461(A)	WEEKEND

9/24/2022	NOV	-45	ELEC		UOCAVA ballots mailed out	16-543(A)	WEEKEND
9/24/2022	NOV	-45	ELEC		Update PCED website		WEEKEND
9/24/2022	NOV	-45	ELEC		Poll worker instruction may begin, if applicable	16-532	WEEKEND
9/24/2022	NOV	-45	ELEC		Set up poll locations & poll workers Agenda items for October BOS on or before 10/19-- deadline 10 days before that		WEEKEND
9/25/2022	NOV	-44	ELEC		<b>Recommended deadline to order ballot cards/stock for General Election</b>	<b>16-508</b>	<b>WEEKEND</b>
9/29/2022	NOV	-40	ELEC		Last day to accept suggestions from county party chairmen on changes to sample ballot due to error or omission	16-461(B)	
9/29/2022	NOV	-40	ELEC		Sample ballot extract to Runbeck		
9/29/2022	NOV	-40	ELEC		Last day to file as a write-in candidate (before 5:00 p.m.) for an election that can not be canceled	16-312(B)(1)	
9/29/2022	NOV	-40	ELEC		Complete delivery schedule with troubleshooter assignments		
9/30/2022	NOV	-39	ELEC		Prepare write-in candidate signs (include to supplies for Precinct Inspectors)	16-312(E )	
10/1/2022			REC		October 1 Voter Registration Report due	16-168	
10/1/2022			SOS		Continued party recognition calculated as of 10/1/22	16-804	
10/1/2022			BOS/ELEC		Deadline to establish new election precincts and boundaries	16-411(A)	
10/1/2022			ELEC		Begin filing 3Q Campaign Finance Report covering 7/17/22 - 9/30/22, PAC, Political Party	16-927(A)(2)(b)	WEEKEND
10/1/2022			ELEC		Begin filing 3Q Campaign Finance Report covering 7/17/22 - 9/30/22, Candidates	16-927(A)(2)(b)&(B)	WEEKEND
10/4/2022	NOV	-35	JURIS		Mailing of Publicity Pamphlets	35-454(A)(1)	
10/6/2022	NOV	-33	SOS		Print Early Ballots and deliver to County Recorders	16-503 16_545	WEEKEND
10/7/2022	NOV	-32	ELEC		Counter/replacement ballots due from Runbeck		
10/9/2022	NOV	-30	SOS		Logic and Accuracy Tests begin before early voting for General	16-449 EPM	WEEKEND
10/9/2022	NOV	-30	ELEC		Submit polling places to BOS for approval, if applicable		WEEKEND
10/9/2022	NOV	-30	ELEC		Submit board workers to BOS for approval, if applicable		WEEKEND
10/9/2022	NOV	-30	ELEC		Submit agenda placeholder for Canvass (only if county or school district contests on ballot)		WEEKEND
10/9/2022	NOV	-30	ELEC		Recommended date to begin accepting political party election observer lists from county party chairmen	16-590(A)	WEEKEND
10/9/2022	NOV	-30	GOV		<b>Deadline for Issuance of Proclamation of General Election by Governor</b>	16-214	WEEKEND
10/10/2022	NOV	-29	ELEC		Last day to register to vote for General 11:59 pm (moved to next business day due to weekend)	16-120(A)	WEEKEND
10/11/2022	NOV	-28	ELEC		Last day to complete internal L&A testing		
10/11/2022	NOV	-28	ELEC		Begin stocking cages, if applicable		
10/12/2022	NOV	-27	ELEC		Early voting begins for General	16-542(C )	
10/12/2022	NOV	-27	ELEC		Mail early ballots for 11/8/2022 to PEVL and one-time requests	16-544(F)	
10/14/2022	NOV	-25	ELEC		Recommended deadline to print challenge lists and payroll vouchers	16-536, 16-594	
10/14/2022	NOV	-25	ELEC		Recommended deadline to have ballot labels ready for voting devices ???	16-405	
10/14/2022	NOV	-25	ELEC		Recommended deadline to print poll lists	16-516	
10/14/2022	NOV	-25	ELEC		Recommended deadline to print official and unofficial return envelopes	16-511(A) 16-615, 616	
10/14/2022	NOV	-25	ELEC		Recommended deadline to print duplicate ballot report forms	16-608(A)	
10/15/2022			ELEC		Deadline for 3Q Campaign Finance Report covering 7/17/22 - 9/30/22, PAC, Political Party	16-927(A)(2)(b)	WEEKEND
10/15/2022			ELEC		Deadline for 3Q Campaign Finance Report covering 7/17/22 - 9/30/22, Candidates	16-927(A)(2)(b)&(B)	WEEKEND
10/18/2022	NOV	-21	ELEC		Input voter registration totals into ERM		
10/18/2022	NOV	-21	ELEC		Prepare Central Count Board forms		
10/19/2022	NOV	-20	REC		8 days after close of registration Deliver complete copies of precinct registers to county and state party chairmen	16-168(C )	
10/19/2022	NOV	-20	REC		Deadline to designate polling places (except for special district and mail ballot elections)	16-411(B)	
10/19/2022	NOV	-20	REC		Appoint all election boards (resolution to BOS?)	16-531 16-535 16-551	
10/21/2022	NOV	-18	ELEC		Recommended deadline to print log books and forms for Receiving Sites, Central Count, Computer Center and Early Ballot Processing	16-608	
10/21/2022	NOV	-18	ELEC		Recommended deadline to outline polling place support plan for General Election Day		
10/22/2022	NOV	-17	ELEC		File database program & certification letter with Secretary of State	16-445(A)	
10/22/2022	NOV	-17	ELEC		Complete ENR programming and conduct test		
10/22/2022	NOV	-17	ELEC		Perform Logic and Accuracy Tests within 17 days of 11/8/22 - notify public 48 hours in advance	16-449(A) EPM	WEEKEND
10/22/2022	NOV	-17	ELEC		File Computer Program and Voting Equipment Certification for 11/8/22 with SOS	16-445(A) EPM	WEEKEND
10/23/2022		-16	ELEC		Begin Pre-General Campaign Finance Report covering 10/1/22 - 10/22/22, PAC, Political Party	16-927(A)(2)(a)	WEEKEND
10/23/2022		-16	ELEC		Begin Pre-General Campaign Finance Report covering 10/1/22 - 10/22/22, Candidates	16-927(A)(2)(b)&(B)	WEEKEND
10/25/2022	NOV	-14	ELEC		Contact IT re live feed ON -Link to Live Feed (2 weeks before election)	16-550(B)	
10/25/2022	NOV	-14	ELEC		Tallying of early ballots may begin 2 weeks before 11/8/22	16-550(B)	
10/28/2022	NOV	-11	ELEC		Mail notice to county party chairmen as to time and place when voting devices can be inspected ???	16-447(B)	
10/28/2022	NOV	-11	REC		Last day to request a ballot by mail	16-542(E )	
10/28/2022	NOV	-11	REC		Mail sample ballot to every household that contains a registered voter not on the PEVL	16-510(C )	

10/28/2022	NOV	-11	ELEC		Deadline for accepting requests for assistance by Special Election Board due to "continuing" illness or Disability	16-549(C )	
10/29/2022		-10	ELEC		Deadline for Pre-General Campaign Finance Report covering 10/1/22 - 10/22/22, PAC, Political Party	16-927(A)(2)(a)	WEEKEND
10/29/2022		-10	ELEC		Deadline for Pre-General Campaign Finance Report covering 10/1/22 - 10/22/22, Candidates	16-927(A)(2)(b)&(B)	WEEKEND
10/29/2022	NOV	-10	ELEC		Begin accepting requests for assistance by Special Election Board due to "unanticipated" illness or Disability	16-549(D )	WEEKEND
10/29/2022	NOV	-10	ELEC		Complete stocking of cages, if applicable		WEEKEND
10/29/2022	NOV	-10	ELEC		Deadline to publish Election Proclamation made by Governor	16-214(C )	WEEKEND
10/29/2022	NOV	-10	REC		Prepare official precinct registers (handled by epoll book)	16-168(A)	WEEKEND
10/29/2022	NOV	-10	REC		Prepare inactive voter lists (handled by epoll book)	16-583	WEEKEND
11/1/2022	NOV	-7	ELEC		Deadline for political parties to provide names of person intending to participate in hand count (5pm)	16-602(B)(7)	
11/1/2022	NOV	-7	ELEC		Suggested last day for voters to mail back ballots		
11/1/2022	NOV	-7	ELEC		Reserve fleet vehicles for staff, if applicable		
11/1/2022	NOV	-7	ELEC		Complete packing troubleshooter bags, if applicable		
11/1/2022	NOV	-7	ELEC		Complete packing inspectors envelopes, if applicable		
11/1/2022	NOV	-7	ELEC		Make contact with all polling place representatives to confirm details re delivery, Election Day, and retrieval of cages		
11/1/2022	NOV	-7	ELEC		Check with all inspectors and ensure that polling place keys have been picked up and that election board contact info has been distributed		
11/2/2022	NOV	-6	ELEC		Deadline for officer in charge of election to notify political party of shortage of persons participating in hand count (9am)	16-602(B)(7)	
11/3/2022	NOV	-5	ELEC		Deadline for political parties to provide sufficient number of persons participating in hand count (5pm)	16-602(B)(7)	
11/4/2022	NOV	-4	ELEC		Deadline for UOCAVA voter recently discharged or separated from employment to register to vote 5 pm	16-103(D)	
11/4/2022	NOV	-4	ELEC		Deadline to vote early In-person by 5 pm	16-542(E )	
11/4/2022	NOV	-4	ELEC		Begin emergency early voting due to an emergency occurring between 5 pm 11/4/2022 and 5 pm 11/7/22 that would prevent elector from voting at the polls	16-542(H)	
11/6/2022	NOV	-2	ELEC		Deliver ballots to Inspector	16-509	WEEKEND
11/7/2022	NOV	-1	ELEC		Provide updated list of early voters to inspectors (Handled by epoll books)		
11/7/2022	NOV	-1	ELEC		Complete instruction classes to Precinct Boards, Receiving, Central Count	16-532	
11/7/2022	NOV	-1	ELEC		Deliver polling place supplies, ballots, write-in candidate lists	16-404 16-447(D) 16-511 16-312(E )	
11/8/2022	NOV	0	ALL		<b>GENERAL ELECTION DAY</b>	<b>16-204(B)/16-225</b>	
11/8/2022	NOV	0	REC		Continue delivery of early ballots to Early Boards for processing until 7 pm	16-551(C )	
11/8/2022	NOV	0	REC		Deadline for UOCAVA voters to register to vote for 11/8/22 General by 7 pm	16-103(C )	
11/8/2022	NOV		CCEC		End of CCEC General Election Period	16-961(B)(5)	
11/9/2022	NOV	1	ELEC		Provide any provisional ballots to Recorder's Office		
11/9/2022	NOV	1	ELEC		Provide all dropped off mail ballots to Early Voting		
11/9/2022	NOV	1	ELEC		Check all cages, troubleshooter bags, and other areas for any ballots		
11/9/2022	NOV	1	ELEC		Begin conducting hand count within 24 hours of polls closing, only if federal/state contests/ballot measures	16-602( I )	
11/9/2022	NOV	1	ELEC		Select 2% of precincts and 1% of 5000 sequesters early ballot batches for hand count	16-602( I ) 16-602(B)(1) EPM 16-602(F)	
11/9/2022	NOV	1	ELEC		Select contested races for hand count	16-602(B)(1) 16-602(F) EPM	
11/9/2022	NOV	1	CCEC		Candidates to return monies above sufficient amount to pay unpaid bills during General Election Period	16-953(B)	
11/9/2022	NOV	1	CCEC		Begin exploratory Period for 2022 Election candidates 11/9/22 to 7/31/23	16-961(B)(2)	
11/14/2022	NOV	6	ELEC		Deadline to hear early ballot challenges by 5 pm	16-552(E )	HOLIDAY
11/14/2022	NOV	6	ELEC		First day to canvass jurisdictional election returns	16-642(A) 16-645(A)	HOLIDAY
11/15/2022	NOV	7	ELEC		Audit all unused ballots returned from polling places, if applicable		
11/15/2022	NOV	7	ELEC		Complete payroll grid for poll workers		
11/16/2022	NOV	8	ELEC		GE + 5 bus days - Last day for conditional provisional voters to present ID, if applicable	16-579(A)(2) 16-550(A) EPM	
11/17/2022		-180	ELEC		Deadline for 180 day notice for 5/16/2023 election (this election not yet on the calendar	16-205	
11/18/2022	NOV	10	ELEC		Last day to verify and process Provisional Ballots	16-584(E ) 16-135(D)	
11/22/2022	NOV	14	ELEC		Contact IT re live feed OFF -Remove link to Live Feed (2 weeks after election)	16-550(B)	
11/28/2022	NOV	20	ELEC		Last day to meet and canvass jurisdictional election returns and issue Certificates of Election for County and Local Offices	16-642(A) 16-645(A)	
12/1/2022			SOS		Deadline for SOS to determine political parties for continued recognition based on Oct. 1 VR report		
12/3/2022	NOV	25	ELEC		Last day to file a statement contesting the jurisdictional election (within 5 days after completion of canvass)	16-673(A)/16-674(A)	
12/5/2022	NOV		SOS		<b>Official Canvass of November 8 2022 General Election</b>	<b>Const. Art V § 10 16-648(A)</b>	



**2021-2022 ELECTION CALENDAR - AZSOS REV. 9/27/2021**

DATE	DATE IN STATUTE	Cat 1	Cat 2	EVENT	REFERENCE	HOLIDAY/ WEEKEND STATUS
1/1/2021	Jan 1	SOS		Begin filing Public Officers Annual Financial Disclosure Statement covering CY2020	18-444(D)	HOLIDAY
1/1/2021	Jan 1	SOS		Begin Filing 2020 4th Qtr Lobbyist Expenditure Report covering October 1, 2020 - December 31, 2020	41-1232.02(B) 41-1232.03(B)	HOLIDAY
1/1/2021	Jan 1	SOS		Begin Filing Principal and Public Body 2020 Annual Expenditure Reports covering January 1, 2020 - December 31, 2020	41-1232.02(A) 41-1232.03(A)	HOLIDAY
1/1/2021	Jan 1	SOS		Begin filing Standing Committee 2020 4th Qtr Campaign Finance Report covering October 18, 2020 - December 31, 2020	16-927(A)(2)(b) 16-928(B)	HOLIDAY
1/1/2021	Jan 1	SOS	ELEC	Begin filing PAC and Political Party 2020 4th Qtr Campaign Finance Report covering October 18, 2020 - December 31, 2020	16-927(A)(2)(b)	HOLIDAY
1/1/2021	Jan 1	SOS		Begin Filing Candidate 2020 4th Qtr Campaign Finance Report Covering October 18, 2020 - December 31, 2020 (Statewide and Legislative candidates)	16-927(B)	HOLIDAY
1/1/2021	Jan 1	ELEC		Begin Filing Candidate 2020 4th Qtr Campaign Finance Report Covering October 18, 2020 - December 31, 2020 (applicable county and local races)	16-927(B)	HOLIDAY
1/2/2021	Jan 2	SOS	REC	Begin compiling county-provided January 2 Voter Registration Report	16-168(G)(2)(a)	SATURDAY
1/11/2021	Jan 11 (Second Monday in January)	SOS		Deadline for filing Biennial Principal or Public Body Registration Renewal for period covering 2021-2022	41-1232(C) 41-1232.01(C)	
1/15/2021	Jan 15	SOS		Deadline for filing Standing Committee 2020 4th Qtr Campaign Finance Report covering October 18, 2020 - December 31, 2020	16-927(A)(2)(b) 16-928(B)	
1/15/2021	Jan 15	SOS	ELEC	Deadline for filing PAC and Political Party 2020 4th Qtr Campaign Finance Report covering October 18, 2020 - December 31, 2020	16-927(A)(2)(b)	
1/15/2021	Jan 15	SOS		Deadline for Filing Candidate 2020 4th Qtr Campaign Finance Report Covering October 18, 2020 - December 31, 2020 (Statewide and Legislative candidates)	16-927(B)	
1/15/2021	Jan 15	ELEC		Deadline for Filing Candidate 2020 4th Qtr Campaign Finance Report Covering October 18, 2020 - December 31, 2020 (applicable county and local races)	16-927(B)	
1/23/2021	MarE-45	REC		Deadline for permanent early voters to notify county that an early ballot not be sent for March 9, 2021 election	16-544(F)	SATURDAY
1/23/2021	MarE-45	REC		Mail UOCAVA ballots by 45th day before March 9, 2021 Election for all requests received on or before the 48th day before the election.	16-543(A) MOVE Act	SATURDAY
1/31/2021	Jan 31	SOS		Election System Software Escrow Statement: Election vendors who have voting equipment certified for use in Arizona elections and whose equipment is currently in use or will be used in an upcoming election shall notify the Secretary of State, in writing, by January 31 of each year where the source code is held in escrow		
2/1/2021	Jan 31	SOS		Deadline for officeholders to file annual FDS	18-444(D)	SUNDAY
2/1/2021	Jan 31 (moved to next business day)	SOS		Deadline for Filing 2020 4th Qtr Lobbyist Expenditure Report covering October 1, 2020 - December 31, 2020	41-1232.02(B) 41-1232.03(B)	SUNDAY
2/2/2021	Feb 1	SOS		Send Notices of Failure to File for Public Officers Annual Financial Disclosure Statements covering CY2021	38-544	
2/4/2021	AugE-180	BOS		Deadline for 180 day notice by Board of Supervisors for August 3, 2021 Election	16-205(A)	
2/8/2021	MarE-29 (until 11:59 pm)	REC		<b>Last day to Register to Vote for March 9, 2021 Election (11:59 p.m.)</b>	<b>16-120(A)</b>	
2/10/2021	MarE-27	ELEC		Begin Early Voting for March 9, 2021 Election	16-542(C)	



**2021-2022 ELECTION CALENDAR - AZSOS REV. 9/27/2021**

<b>2/10/2021</b>	MarE-27	REC		Mail Early Ballots for March 9, 2021 Election to voters on permanent early voting list and voters who have requested a one-time ballot-by-mail	16-544(F)	
<b>2/14/2021</b>	MayE-93	REC		Begin accepting ballot-by-mail requests for May 18, 2021 Election (UOCAVA voters and protected voters under 16-153 can request ballots before this date)	16-542(A)(B) 16-153	<b>SUNDAY</b>
<b>2/20/2021</b>	MarE-17	ELEC	SOS	File Computer Program and Voting Equipment Certification for March 9, 2021 Election with Secretary of State	16-445(A) Procedures Manual	<b>SATURDAY</b>
<b>2/21/2021</b>	MarE-16	SOS		Begin Filing Standing Committee 2021 March Pre-Election Campaign Finance Report covering January 1, 2021 - February 20, 2021	16-927(A)(2)(a) 16-928(B)	<b>SUNDAY</b>
<b>2/21/2021</b>	MarE-16	ELEC		Begin Filing Candidate Committee 2021 March Pre-Election Campaign Finance Report covering January 1, 2021 - February 20, 2021 (local jurisdictions only)	16-927(A)(2)(a) 16-927(B)	<b>SUNDAY</b>
<b>2/23/2021</b>	MarE-14	ELEC			16-550(B)	
<b>2/26/2021</b>	MarE-11	REC		Deadline for accepting requests for a Ballot-by-Mail for the March 9, 2021 Election	16-542(E)	
<b>2/27/2021</b>	MarE-10	SOS		Deadline for Filing Standing Committee 2021 March Pre-Election Campaign Finance Report covering January 1, 2021 - February 20, 2021	16-927(A)(2)(a) 16-928(B) 1-243(A) 1-303	<b>SATURDAY</b>
<b>2/27/2021</b>	MarE-10	ELEC		Deadline for Filing Candidate Committee 2021 March Pre-Election Campaign Finance Report covering January 1, 2021 - February 20, 2021	16-927(A)(2)(a) 16-927(B) 1-243(A) 1-303	<b>SATURDAY</b>
<b>3/1/2021</b>	March 1	SOS		Deadline for Filing Principal and Public Body 2020 Annual Expenditure Reports covering January 1, 2020 - December 31, 2020	41-1232.02(A) 41-1232.03(A)	
<b>3/5/2021</b>	MarE-4	ELEC		Deadline to Vote Early In-Person for the March 9, 2021 Election by 5:00 p.m.	16-542(E)	
<b>3/9/2021</b>	<b>MarE (2nd Tuesday in March)</b>	<b>ALL</b>		<b>March 9, 2021 Election</b>	<b>16-204(F)(1)</b>	
<b>3/12/2021</b>	MarE+3 business days	REC		Last day for identification verification for Conditional Provisional Ballots and curing of early ballot affidavit signatures. For counties that have a 4-day work week, the deadline will be the next business day: Monday March 15, 2021.	16-579(A)(2) 16-550(A) Procedures Manual at page 189	
<b>3/15/2021</b>	MarE + 6	BOS		First day to canvass returns for March 9, 2021 Election	16-642(A) 16-645(A)	
<b>3/29/2021</b>	MarE+20	BOS		Last day to canvass returns for March 9, 2021 Election	16-642(A) 16-645(A)	
<b>4/1/2021</b>	Apr 1	SOS	REC	Begin compiling county-provided April 1 Voter Registration Report	16-168(G)(2)(b)	
<b>4/1/2021</b>	Apr 1	SOS		Begin filing 2021 1st Qtr Lobbyist Expenditure Report covering January 1, 2021 - March 31, 2021	41-1232.02(B) 41-1232.03(B)	
<b>4/1/2021</b>	Apr 1	SOS		Begin filing Standing Committee 2021 1st Qtr Campaign Finance Report covering February 21, 2021 - March 31, 2021	16-927(A)(2)(b) 16-928(B)	

**2021-2022 ELECTION CALENDAR - AZSOS REV. 9/27/2021**

<b>4/1/2021</b>	Apr 1	SOS		Begin filing PAC and Political Party 2021 1st Qtr Campaign Finance Report covering January 1, 2021 - March 31, 2021	16-927(A)(1)	
<b>4/1/2021</b>	Apr 1	ELEC		Begin filing Candidate 2021 1st Qtr Campaign Finance Report covering February 21, 2021 - March 31, 2021 (applicable county and local races)	16-927(A)(2)(b) 16-927(B)	
<b>4/3/2021</b>	MayE-45	REC		Deadline for permanent early voters to notify county that an early ballot not be sent for May 18, 2021 Election	16-544(F)	<b>SATURDAY</b>
<b>4/3/2021</b>	MayE-45	REC		Mail UOCAVA ballots for all requests received on or before the 48th day before May 18, 2021 Election.	16-543(A);	<b>SATURDAY</b>
<b>4/15/2021</b>	Apr 15	SOS		Deadline for filing Standing Committee 2021 1st Qtr Campaign Finance Report covering February 21, 2021 - March 31, 2021	16-927(A)(2)(b); 16-928(B)	
<b>4/15/2021</b>	Apr 15	ELEC		Deadline for filing PAC and Political Party 2021 1st Qtr Campaign Finance Report covering January 1, 2021 - March 31, 2021	16-927(A)(1)	
<b>4/15/2021</b>	Apr 15	ELEC		Deadline for filing Candidate 2021 1st Qtr Campaign Finance Report covering February 21, 2021 - March 31, 2021 (applicable county and local races)	16-927(A)(2)(b) 16-927(B)	
<b>4/19/2021</b>	<b>MayE-29</b>	<b>REC</b>		<b>Last day to register to vote for May 18, 2021 Election (11:59 p.m.)</b>	<b>16-120(A)</b>	
<b>4/21/2021</b>	MayE-27	ELEC		Begin early voting for May 18, 2021 Election	16-542(C)	
<b>4/21/2021</b>	MayE-27	REC		Mail early ballots for May 18, 2021 Election to voters on Permanent Early Voting List and voters who have requested a one-time ballot-by-mail	16-544(F)	
<b>4/30/2021</b>	Apr 30	SOS		Deadline for filing 2021 1st Qtr Lobbyist Expenditure Report covering January 1, 2021 - March 31, 2021	41-1232.02(B) 41-1232.03(B)	
<b>5/1/2021</b>	MayE-17	ELEC	SOS	File Computer Program and Voting Equipment Certification for May 18, 2021 Election with Secretary of State	16-445(A) Procedures Manual	<b>SATURDAY</b>
<b>5/2/2021</b>	May 2	SOS		Begin filing Standing Committee 2021 May Pre-Election Campaign Finance Report covering April 1, 2021 - May 1, 2021	16-927(A)(2)(a) 16-928(B)	<b>SUNDAY</b>
<b>5/2/2021</b>	May 2	ELEC		Begin filing Candidate 2021 May Pre-Election Campaign Finance Report covering April 1, 2021 - May 1, 2021 (applicable county or local races)	16-927(A)(2)(a) 16-927(B)	<b>SUNDAY</b>
<b>5/2/2021</b>	AugE-93	REC		Begin accepting ballot-by-mail requests for August 3, 2021 Election (UOCAVA voters and protected voters under 16-153 can request ballots before this date)	16-542(A)(B) 16-153	<b>SUNDAY</b>
<b>5/4/2021</b>	MayE-14	ELEC		Tallying of early ballots for May 18, 2021 Election may begin	16-550(B)	
<b>5/5/2021</b>	AugE - 90	ELEC		Mail Notice of August 3, 2021 Election to Permanent Early Voters	16-544(D)	
<b>5/6/2021</b>	May 6	SOS		Deadline for 180 day notice by Board of Supervisors for November 2, 2021 Election	16-205(A)	
<b>5/7/2021</b>	MayE-11	REC		Deadline for accepting requests for a ballot-by-mail for the May 18, 2021 Election	16-542(E)	
<b>5/8/2021</b>	MayE- 10	SOS		Deadline for filing Standing Committee 2021 May Pre-Election Campaign Finance Report covering April 1, 2021 - May 1, 2021	16-927(A)(2)(a) 16-928(B) 1-243(A) 1-303	<b>SATURDAY</b>
<b>5/8/2021</b>	MayE-10	ELEC		Deadline for filing Candidate 2021 May Pre-Election Campaign Finance Report covering April 1, 2021 - May 1, 2021 (applicable county or local races)	16-927(A)(2)(a) 16-927(B) 1-243(A) 1-303	<b>SATURDAY</b>
<b>5/14/2021</b>	MayE - 4	ELEC		Deadline to Vote Early In-Person for the May 18, 2021 Election by 5:00 p.m.	16-542(E)	
<b>5/18/2021</b>	<b>MayE (3rd Tuesday in May)</b>	<b>ALL</b>		<b>May 18, 2021 Election</b>	<b>16-204(F)(2)</b>	
<b>5/21/2021</b>	MayE + 3 business days	REC		Last day for identification verification for Conditional Provisional Ballots and curing of early ballot affidavit signatures. For counties that have a 4-day work week, the deadline will be the next business day: Monday May 24, 2021.	16-579(A)(2) 16-550(A) Procedures Manual	

**2021-2022 ELECTION CALENDAR - AZSOS REV. 9/27/2021**

<b>5/24/2021</b>	MayE + 6	BOS		First day to canvass returns for May 18, 2021 Election	16-642(A) 16-645(A)	
<b>6/7/2021</b>	MayE+20	BOS		Last day to canvass returns for May 18, 2021 Election	16-642(A) 16-645(A)	
<b>6/19/2021</b>	AugE-45	REC		Deadline for permanent early voters to notify county that an early ballot not be sent for August 3, 2021 Election	16-544(F)	<b>SATURDAY</b>
<b>6/19/2021</b>	AugE-45	REC		Mail UOCAVA ballots for all requests received on or before the 48th day before August 3, 2021 Election.	16-543(A)	<b>SATURDAY</b>
<b>7/1/2021</b>	Jul 1	SOS	REC	Begin compiling county-provided July 1 Voter Registration Report	16-168(G)(2)(c)	
<b>7/1/2021</b>	Jul 1	SOS		Begin filing Standing Committee 2021 2nd Qtr Campaign Finance Report covering May 2, 2021 - June 30, 2021	16-927(A)(2)(b) 16-928(B)	
<b>7/1/2021</b>	Jul 1	ELEC		Begin filing PAC and Political Party 2021 2nd Qtr Campaign Finance Report covering April 1, 2021 - June 30, 2021	16-927(A)(1)	
<b>7/1/2021</b>	Jul 1	ELEC		Begin filing Candidate 2nd Qtr Campaign Finance Report covering May 2, 2021 - June 30, 2021 (applicable county or local races)	16-927(A)(2)(b) 16-927(B)	
<b>7/1/2021</b>	Jul 1	SOS		Begin filing 2021 2nd Qtr Lobbyist Expenditure Report covering April 1, 2021 - June 30, 2021	41-1232.02(B) 41-1232.03(B)	
<b>7/6/2021</b>	<b>AugE-29 (July 5 = observed holiday, moved to next business day)</b>	<b>REC</b>		<b>Last day to Register to Vote for August 3, 2021 Election (Until 11:59 PM)</b>	<b>16-120(A)</b>	<b>HOLIDAY</b>
<b>7/7/2021</b>	AugE-27	ELEC		Begin early voting for August 3, 2021 Election	16-542(C)	
<b>7/7/2021</b>	AugE-27	REC		Mail early ballots for August 3, 2021 Election to voters on Permanent Early Voting List and voters who have requested a one-time ballot-by-mail	16-544(F)	
<b>7/15/2021</b>	Jul 15	SOS		Deadline for filing Standing Committee 2021 2nd Qtr Campaign Finance Report covering May 2, 2021 - June 30, 2021	16-927(A)(2)(b) 16-928(B)	
<b>7/15/2021</b>	Jul 15	ELEC		Deadline for filing PAC and Political Party 2021 2nd Qtr Campaign Finance Report covering April 1, 2021 - June 30, 2021	16-927(A)(1)	
<b>7/15/2021</b>	Jul 15	ELEC		Deadline for filing Candidate 2nd Qtr Campaign Finance Report covering May 2, 2021 - June 30, 2021 (applicable county or local races)	16-927(A)(2)(b) 16-927(B)	
<b>7/17/2021</b>	AugE-17	ELEC	SOS	File Computer Program and Voting Equipment Certification for August 3, 2021 Election with Secretary of State	16-445(A) Procedures Manual	<b>SATURDAY</b>
<b>7/18/2021</b>	AugE-16	SOS		Begin filing Standing Committee 2021 Pre-Primary Campaign Finance Report covering July 1, 2021 - July 17, 2021	16-927(A)(2)(a) 16-928(B)	<b>SUNDAY</b>
<b>7/18/2021</b>	AugE-16	ELEC		Begin filing Candidate 2021 Pre-Primary Campaign Finance Report covering July 1, 2021 - July 17, 2021 (applicable county or local races)	16-927(A)(2)(a) 16-927(B)	<b>SUNDAY</b>
<b>7/20/2021</b>	90 + 1 Days after Legislature adjourns sine die	ALL		General effective date of legislation passed during 2021 55th Legislature, First Regular Session. (Based on anticipated adjournment of April 20, 2021; this date will change if Legislature adjourns on a different date.)	Const. Art. IV, Pt. 1, § 1(3) 1-243(A)	
<b>7/20/2021</b>	AugE-14	ELEC		Tallying of early ballots for August 3, 2021 Election may begin	16-550(B)	
<b>7/23/2021</b>	AugE-11	REC		Deadline to accept requests for a Ballot-by-Mail for the August 3, 2021 Election	16-542(E)	
<b>7/24/2021</b>	AugE-10	SOS		Deadline for filing Standing Committee 2021 Pre-Primary Campaign Finance Report covering July 1, 2021 - July 17, 2021	16-927(A)(2)(a) 16-928(B) 1-243(A) 1-303	<b>SATURDAY</b>
<b>7/24/2021</b>	AugE-10	ELEC		Deadline for filing Candidate 2021 Pre-Primary Campaign Finance Report covering July 1, 2021 - July 17, 2021 (applicable county and local races)	16-927(A)(2)(a) 16-927(B) 1-243(A) 1-303	<b>SATURDAY</b>
<b>7/30/2021</b>	AugE-4	ELEC		Deadline to Vote Early In-Person for the August 3, 2021 Election by 5:00 p.m.	16-542(E)	

**2021-2022 ELECTION CALENDAR - AZSOS REV. 9/27/2021**

7/30/2021	July 30	ELEC		Begin emergency early voting in a manner prescribed by the BOS due to an emergency occurring between 5:00 p.m. on July 30, 2021 and 5:00 p.m. on August 2, 2021 that would prevent the elector from voting at the polls	16-542(H)	
7/31/2021	Jul 31	CCEC	SOS	End of CCEC Exploratory Period for 2022 Election. Exploratory Period covers November 4, 2020 - July 31, 2021	16-961(B)(2)	<b>SATURDAY</b>
8/1/2021	Aug 1	CCEC	SOS	Begin CCEC Qualifying Period for 2022 Election. Qualifying Period covers August 1, 2021 - July 26, 2022	16-961(B)(3)	<b>SUNDAY</b>
8/1/2021	Nov E-93	REC		Begin accepting ballot-by-mail requests for November 2, 2021 Election (UOCAVA voters and protected voters under 16-153 can request ballots before this date)	16-542(A)(B) 16-153	<b>SUNDAY</b>
8/2/2021	Jul 31 (moved to next business day)	SOS		Deadline for filing 2021 2nd Qtr Lobbyist Expenditure Report covering April 1, 2021 - June 30, 2021	41-1232.02(B) 41-1232.03(B)	<b>SATURDAY</b>
8/3/2021	<b>AugE (1st Tuesday in August)</b>	<b>ALL</b>		<b>August 3, 2021 Election</b>	<b>16-204(F)(3)</b>	
8/6/2021	AugE+3 business days	REC		Last day for identification verification for Conditional Provisional Ballots and curing of early ballot affidavit signatures. For counties with a 4-day work week, the deadline is the following Monday, August 9, 2021.	16-579(A)(2) 16-550(A) Procedures Manual	
8/9/2021	AugE+6	BOS		First day to canvass returns for August 3, 2021 Election	16-642(A) 16-645(A)	
8/23/2021	AugE+20	BOS		Last day to canvass returns for August 3, 2021 Election	16-642(A) 16-645(A)	
9/9/2021	MarE-180	BOS		Deadline for 180 day notice by Board of Supervisors for March 8, 2022 Election	16-205(A)	
9/18/2021	NovE-45	REC		Deadline for permanent early voters to notify county that an early ballot not be sent for November 2, 2021 election	16-544(F)	<b>SATURDAY</b>
9/18/2021	NovE-45	REC		Mail UOCAVA ballots for all requests received on or before the 48th day before November 2, 2021 Election.	16-543(A)	<b>SATURDAY</b>
10/1/2021	Oct 1	SOS		Deadline for Secretary of State to submit updated Elections Procedures Manual to Governor and Attorney General for review.	16-452(B)	
10/1/2021	Oct 1	SOS		Begin filing Standing Committee 2021 3rd Qtr Campaign Finance Report covering July 18, 2021 - September 30, 2021	16-927(A)(2)(b) 16-928(B)	
10/1/2021	Oct 1	SOS	ELEC	Begin filing PAC and Political Party 2021 3rd Qtr Campaign Finance Report covering July 1, 2021 - September 30, 2021	16-927(A)(1)	
10/1/2021	Oct 1	ELEC		Begin filing Candidate 2021 3rd Qtr Campaign Finance Report covering July 18, 2021 - September 30, 2021 (applicable county or local races)	16-927(A)(2)(b) 16-927(B)	
10/1/2021	Oct 1	SOS	REC	Begin compiling county-provided October 1 Voter Registration Report	16-168(G)(2)(d)	
10/1/2021	Oct 1	SOS		Continued party recognition calculated based on registered voters as of October 1, 2021	16-804(A), (B) 16-168(G)	
10/1/2021	Oct 1	SOS		Begin filing 2021 3rd Qtr Lobbyist Expenditure Report covering July 1, 2021 - September 30, 2021	41-1232.02(B) 41-1232.03(B)	
10/1/2021	Oct 1	BOS		Deadline to establish new election precincts and boundaries. This may be impacted by redistricting in early 2022.	16-411(A)	
10/4/2021	<b>NovE-29</b>	<b>REC</b>		<b>Last day to register to vote for November 2, 2021 Election (11:59 p.m.)</b>	<b>16-120(A)</b>	
10/6/2021	NovE-27	ELEC		Begin early voting for November 2, 2021 Election	16-542(C)	
10/6/2021	NovE-27	REC		Mail early ballots for November 2, 2021 Election to voters on Permanent Early Voting List and voters who have requested a one-time ballot-by-mail	16-544(F)	
10/15/2021	Oct 15	SOS		Deadline for filing Standing Committee 2021 3rd Qtr Campaign Finance Report covering July 18, 2021 - September 30, 2021	16-927(A)(2)(b) 16-928(B)	



**2021-2022 ELECTION CALENDAR - AZSOS REV. 9/27/2021**

10/15/2021	Oct 15	ELEC		Deadline for filing PAC and Political Party 2021 3rd Qtr Campaign Finance Report covering July 1, 2021 - September 30, 2021	16-927(A)(1)	
10/15/2021	Oct 15	ELEC		Deadline for filing Candidate 2021 3rd Qtr Campaign Finance Report covering July 18, 2021 - September 30, 2021 (applicable county and local races)	16-927(A)(2)(b) 16-927(B)	
10/16/2021	NovE-17	ELEC	SOS	File Computer Program and Voting Equipment Certification for November 2, 2021 Election with Secretary of State	16-445(A) Procedures Manual	<b>SATURDAY</b>
10/17/2021	NovE-16	SOS		Begin filing Standing Committee 2021 Pre-General Campaign Finance Report covering October 1, 2021 - October 16, 2021	16-927(A)(2)(a) 16-928(B)	<b>SUNDAY</b>
10/17/2021	NovE-16	ELEC		Begin filing Candidate 2021 Pre-General Campaign Finance Report covering October 1, 2021 - October 16, 2021 (applicable county and local races)	16-927(A)(2)(a) 16-927(B)	<b>SUNDAY</b>
10/22/2021	NovE-11	REC		Deadline to accept requests for a Ballot-by-Mail for the November 2, 2021 Election	16-542(E)	
10/23/2021	NovE-10	SOS		Deadline for filing Standing Committee 2021 Pre-General Campaign Finance Report covering October 1, 2021 - October 16, 2021	16-927(A)(2)(a) 16-928(B) 1-243(A) 1-303	<b>SATURDAY</b>
10/23/2021	NovE-10	ELEC		Deadline for filing Candidate 2021 Pre-General Campaign Finance Report covering October 1, 2021 - October 16, 2021 (applicable county and local races)	16-927(A)(2)(a) 16-927(B) 1-243(A) 1-303	<b>SATURDAY</b>
10/29/2021	NovE-4	ELEC		Deadline to Vote Early In-Person for the November 2, 2021 Election by 5:00 p.m.	16-542(E)	
10/29/2021	Oct 29	ELEC		Begin emergency early voting in a manner prescribed by the BOS due to an emergency occurring between 5:00 p.m. on Oct. 29, 2021 and 5:00 p.m. on Nov. 1, 2021 that would prevent the elector from voting at the polls	16-542(H)	
11/1/2021	Oct 31 (moved to next business day)	SOS		Deadline for filing 2021 3rd Qtr Lobbyist Expenditure Report covering July 1, 2021 - September 30, 2021	41-1232.02(B) 41-1232.03(B)	<b>SUNDAY</b>
11/2/2021	<b>NovE (1st Tuesday after 1st Monday in November)</b>	<b>ALL</b>		<b>November 2, 2021 Election</b>	<b>16-204(F)(4)</b>	
11/5/2021	NovE+3 business days	REC		Last day for identification verification for Conditional Provisional Ballots and curing of early ballot affidavit signatures. For counties with a 4-day work week, the deadline is the following Monday, November 8, 2021.	16-579(A)(2) 16-550(A) Procedures Manual	
11/8/2021	NovE+6	BOS		First day to canvass returns for November 2, 2021 Election	16-642(A) 16-645(A)	
11/18/2021	MayE-180	BOS		Deadline for 180 day notice by Board of Supervisors for May 17, 2022 Election	16-205(A)	
11/22/2021	NovE+20	BOS		Last day to canvass returns for November 2, 2021 Election	16-642(A) 16-645(A)	
11/26/2021	PE-250 (Falls on 11/25, moved to next business day)	REC		Deadline for filing new party petitions with Secretary of State (for statewide recognition) or the county officer in charge of elections (for county recognition) for signature verification	16-803(A)	<b>HOLIDAY</b>
12/1/2021	Dec 1	SOS		Begin filing Biennial Lobbyist Registration Renewal for 2022-2023	41-1232.05(A)	
12/1/2021	Dec 1	SOS	REC	Deadline to determine political parties for continued representation based on votes cast for Governor or presidential electors at last General Election, or based on October 1 county voter registration report	16-804(A)-(D) 16-168(G)	
12/5/2021	MarE - 93	REC		Begin accepting ballot-by-mail requests for March 8, 2022 Election (UOCAVA voters and protected voters under 16-153 can request ballots before this date)	16-542(A)(B) 16-153	<b>SUNDAY</b>

**2021-2022 ELECTION CALENDAR - AZSOS REV. 9/27/2021**

<b>12/7/2021</b>	+7 business days after receipt of new party petitions	SOS		Deadline for Secretary of State to remove ineligible sheets and signatures from new party petition sheets and transmit random sample to County Recorders for signature verification	16-803(B), (C)	
<b>12/8/2021</b>	MarE-90	ELEC		Mail Notice of March 8, 2022 Election to Permanent Early Voters	16-544(D)	
<b>12/21/2021</b>	+10 business days after receipt of random sample	REC		Deadline for County Recorders to verify new party petitions petition signatures for Primary Election and provide certified results to Secretary of State	16-803(E), (F)	
<b>12/27/2021</b>	72 hours (business days only) after receipt of certification from County Recorders	SOS		Deadline for Secretary of State to determine new party petition results of random sample, issue receipt to sponsor committee and issue party recognition (deadline may vary depending on timing of county certification)	16-803(H), (I)	
<b>1/1/2022</b>	Jan 1	SOS		Begin filing Standing Committee 2021 4th Qtr Campaign Finance Report covering October 17, 2021 - December 31, 2021	16-927(A)(2)(b) 16-928(B)	<b>HOLIDAY</b>
<b>1/1/2022</b>	Jan 1	ELEC		Begin filing PAC and Political Party 2021 4th Qtr Campaign Finance Report covering October 1, 2021 - December 31, 2021	16-927(A)(1)	<b>HOLIDAY</b>
<b>1/1/2022</b>	Jan 1	SOS		Begin filing Candidate 2021 Cumulative Report covering all transactions since last filed through December 31, 2021 (Statewide and Legislative candidates)	16-927(A)(2)(b) 16-927(B)	<b>HOLIDAY</b>
<b>1/1/2022</b>	Jan 1	ELEC		Begin filing Candidate 2021 4th Qtr Campaign Finance Report covering October 17, 2021 - December 31, 2021 (applicable county and local races)	16-927(A)(2)(b) 16-927(B)	<b>HOLIDAY</b>
<b>1/1/2022</b>	Jan 1	SOS		Begin filing Public Officers Annual Financial Disclosure Statement covering CY2021	18-444(D)	<b>HOLIDAY</b>
<b>1/1/2022</b>	Jan 1	SOS		Begin filing 2021 4th Qtr Lobbyist Expenditure Report covering October 1, 2021 - December 31, 2021	41-1232.02(B) 41-1232.03(B)	<b>HOLIDAY</b>
<b>1/1/2022</b>	Jan 1	SOS		Begin filing Principal and Public Body 2021 Annual Expenditure Reports covering January 1, 2021 - December 31, 2021	41-1232.02(A) 41-1232.03(A)	<b>HOLIDAY</b>
<b>1/1/2022</b>	Jan 1	SOS		Begin Filing Nomination Papers, Petitions, & QCs for CCEC Candidates	16-951	<b>HOLIDAY</b>
<b>1/2/2022</b>	Jan 2	SOS	REC	Begin compiling county-provided January 2 Voter Registration Report	16-168(G)(1)(a)	<b>SUNDAY</b>
<b>1/2/2022</b>	Jan 2	REC		Deadline to transfer voters into newly established precincts and boundaries	16-411 16-412	<b>SUNDAY</b>
<b>1/2/2022</b>	Jan 2	SOS	ELEC	Calculate petition signature requirements for candidates for the 2022 Primary and General Elections based on the Jan. 2 voter registration numbers	16-322(B) 16-168(G) 16-193(1) 16-321(F)	<b>SUNDAY</b>
<b>1/3/2022</b>	Dec 31 (Falls on holiday; moved to next business day)	SOS		Deadline for SOS to request EAC include AZ DPOC instructions on federal voter registration form	S.B. 1819, Sec. 35	<b>HOLIDAY</b>
<b>1/3/2022</b>	Dec 31 (Falls on holiday; moved to next business day)	SOS		Deadline for issuance of updated Elections Procedures Manual, following approval by Governor and Attorney General	16-452(B)	<b>HOLIDAY</b>
<b>1/10/2022</b>	Jan 10 (second Monday in January)	SOS		Deadline for filing Biennial Lobbyist Registration Renewal for 2022 - 2023	41-1232.05(A)	
<b>1/15/2022</b>	Jan 15	SOS		Deadline for filing Standing Committee 2021 4th Qtr Campaign Finance Report covering October 17, 2021 - December 31, 2021	16-927(A)(2)(b) 16-928(B)	<b>SATURDAY</b>
<b>1/15/2022</b>	Jan 15	SOS	ELEC	Deadline for filing PAC and Political Party 2021 4th Qtr Campaign Finance Report covering October 1, 2021 - December 31, 2021	16-927(A)(1)	<b>SATURDAY</b>
<b>1/15/2022</b>	Jan 15	ELEC		Deadline for Filing Candidate 2021 4th Qtr Campaign Finance Report Covering October 17, 2021 - December 31, 2021 (applicable county and local races)	16-927(A)(2)(b) 16-927(B)	<b>SATURDAY</b>
<b>1/15/2022</b>	Jan 15	SOS		Deadline for Filing Candidate 2021 Cumulative Report covering all transactions since last filed through December 31, 2021 (Statewide and Legislative candidates)	16-927(A)(2)(b) 16-927(B)	<b>SATURDAY</b>
<b>1/22/2022</b>	MarE-45	REC		Deadline for permanent early voters to notify county that an early ballot not be sent for March 8, 2022 Election	16-544(F)	<b>SATURDAY</b>

**2021-2022 ELECTION CALENDAR - AZSOS REV. 9/27/2021**

<b>1/22/2022</b>	MarE-45	REC		Mail UOCAVA ballots for all requests received on or before the 48th day before March 8, 2022 Election	16-543(A)	<b>SATURDAY</b>
<b>1/27/2022</b>	MarE-40	ELEC		Deadline for Write-In Candidates to file Nomination Papers (March local elections)	16-312(B)	
<b>1/31/2022</b>	Jan 31	SOS	ELEC	Deadline for filing Public Officers Annual Financial Disclosure Statement covering CY2021	18-444(D)	
<b>1/31/2022</b>	Jan 31	SOS		Deadline for filing 2021 4th Qtr Lobbyist Expenditure Report covering October 1, 2021 - December 31, 2021	41-1232.02(B) 41-1232.03(B)	
<b>1/31/2022</b>	Jan 31	SOS		Election System Software Escrow Statement: Election vendors who have voting equipment certified for use in Arizona elections and whose equipment is currently in use or will be used in an upcoming election shall notify the Secretary of State, in writing, by January 31 of each year where the source code is held in escrow		
<b>2/1/2022</b>	Feb 1	SOS		Send Notices of Failure to File for Public Officers Annual Financial Disclosure Statements covering CY2021	38-544	
<b>2/3/2022</b>	PE-180	BOS		Deadline for 180 day notice by Board of Supervisors for August 2, 2022 Primary Election	16-205(A)	
<b>2/7/2022</b>	<b>MarE-29</b>	<b>REC</b>		<b>Last day to register to vote for March 8, 2022 Election at 11:59 p.m.</b>	<b>16-120(A)</b>	
<b>2/9/2022</b>	MarE-27	ELEC		Begin early voting for March 8, 2022 Election	16-542(C)	
<b>2/9/2022</b>	MarE-27	REC		Mail early ballots for March 8, 2022 Election to voters on Permanent Early Voting List and voters who have requested a one-time ballot-by-mail	16-544(F)	
<b>2/13/2022</b>	MayE - 93	REC		Begin accepting ballot-by-mail requests for May 17, 2022 Election (UOCAVA voters and protected voters under 16-153 can request ballots before this date)	16-542(A)(B) 16-153	<b>SUNDAY</b>
<b>2/19/2022</b>	MarE-17	ELEC	SOS	File Computer Program and Voting Equipment Certification for March 8, 2022 Election with Secretary of State	16-445(A) Procedures Manual	<b>SATURDAY</b>
<b>2/20/2022</b>	MarE-16	SOS		Begin filing Standing Committee 2022 March Pre-Election Campaign Finance Report covering January 1, 2022 - February 19, 2022	16-927(A)(2)(a) 16-928(B)	<b>SUNDAY</b>
<b>2/20/2022</b>	MarE-16	ELEC		Begin Filing Candidate 2022 March Pre-Election Campaign Finance Report Covering January 1, 2022 - February 19, 2022 (applicable county and local races)	16-927(A)(2)(a) 16-927(B)	<b>SUNDAY</b>
<b>2/25/2022</b>	MarE-11	REC		Deadline to accept requests for a Ballot-by-Mail for the March 8, 2022 Election	16-542(E)	
<b>2/26/2022</b>	MarE-10	SOS		Deadline for filing Standing Committee 2022 March Pre-Election Campaign Finance Report covering January 1, 2022 - February 19, 2022	16-927(A)(2)(a) 16-928(B) 1-243(A) 1-303	<b>SATURDAY</b>
<b>2/26/2022</b>	MarE-10	ELEC		Deadline for filing Candidate 2022 March Pre-Election Campaign Finance Report covering January 1, 2022 - February 19, 2022 (applicable county and local races)	16-927(A)(2)(a) 16-927(B) 1-243(A) 1-303	<b>SATURDAY</b>
<b>3/1/2022</b>	March 1	SOS		Deadline for filing Principal and Public Body 2021 Annual Expenditure Reports covering January 1, 2021 - December 31, 2021	41-1232.02(A) 41-1232.03(A)	
<b>3/2/2022</b>	30 days after due date	SOS		Send Notices of Failure to File for Public Officers Annual Financial Disclosure Statements covering CY2021	16-937 (38-544)	
<b>3/4/2022</b>	MarE-4	ELEC		Deadline to Vote Early In-Person for the March 8, 2022 Election by 5:00 p.m.	16-542(E)	

**2021-2022 ELECTION CALENDAR - AZSOS REV. 9/27/2021**

3/5/2022	PE-150	SOS		Begin accepting Nomination Papers, Nomination Petitions, and Financial Disclosure Statements for Primary Election candidates seeking partisan nomination	16-311(A) 16-314(A) 38-543	<b>SATURDAY</b>
3/5/2022	PE-150	SOS	ELEC	Begin accepting Nomination Papers, Nomination Petitions, and Financial Disclosure Statements for Primary Election candidates seeking "Nomination Other than by Primary" (independent candidates)	16-341(A), (C) 38-543	<b>SATURDAY</b>
3/5/2022	PE-150	ELEC		Begin accepting nonpartisan candidate Nomination Petitions and Papers for Primary Election (applicable county and local jurisdictions)	16-311(B) 16-204	<b>SATURDAY</b>
3/8/2022	<b>MarE (2nd Tuesday in March)</b>	<b>ALL</b>		<b>March 8, 2022 Election</b>	<b>16-204(F)(1)</b>	
3/11/2022	MarE+3 business days	REC		Last day for identification verification for Conditional Provisional Ballots and curing of early ballot affidavit signatures. For counties with a 4-day work week, the deadline falls on 3/14/22.	16-579(A)(2) 16-550(A) Procedures Manual	
3/14/2022	MarE+6	BOS		First day to canvass returns for March 8, 2022 Election	16-642(A) 16-645(A)	
3/28/2022	MarE+20	BOS		Last day to canvass returns for March 8, 2022 Election	16-642(A) 16-645(A)	
4/1/2022	Apr 1	SOS	REC	Begin compiling county-provided April 1, 2022 Voter Registration Report	16-168(G)(1)(b)	
4/1/2022	Apr 1	SOS		Begin filing Standing Committee 2022 1st Qtr Campaign Finance Report covering February 20, 2022 - March 31, 2022	16-927(A)(2)(b) 16-928(B)	
4/1/2022	Apr 1	ELEC		Begin filing PAC and Political Party 2022 1st Qtr Campaign Finance Report covering January 1, 2022- March 31, 2022	16-927(A)(1)	
4/1/2022	Apr 1	ELEC		Begin filing Candidate 2022 1st Qtr Campaign Finance Report covering January 1, 2022 - March 31, 2022 (Statewide and Legislative candidates)	16-927(A)(1) 16-927(B)	
4/1/2022	Apr 1	ELEC		Begin filing Candidate 2022 1st Qtr Campaign Finance Report covering February 20, 2022 - March 31, 2022 (applicable county and local races)	16-927(A)(2)(b) 16-927(B)	
4/1/2022	Apr 1	SOS		Begin filing 2022 1st Qtr Lobbyist Expenditure Report covering January 1, 2022 - March 31, 2022	41-1232.02(B) 41-1232.03(B)	
4/2/2022	MayE-45	REC		Deadline for permanent early voters to notify county that an early ballot not be sent for May 17, 2022 Election	16-544(F)	<b>SATURDAY</b>
4/2/2022	MayE-45	REC		Mail UOCAVA ballots for all requests received on or before the 48th day before May 17, 2022 Election.	16-543(A)	<b>SATURDAY</b>
4/4/2022	PE-120	SOS		Deadline for Secretary of State to send notice to Board of Supervisors designating state and federal offices for which candidates are to be nominated at the August 2, 2022 Primary Election	16-202	
4/4/2022	PE-120	SOS		Deadline for accepting Nomination Papers, Nomination Petitions, and Financial Disclosure Statements for Primary Election candidates seeking partisan nomination	16-311(A) 16-314(A) 38-543	
4/4/2022	PE-120	SOS		Deadline for accepting Nomination Papers, Nomination Petitions, and Financial Disclosure Statements for Primary Election candidates seeking "Nomination Other than by Primary" (independent candidates)	16-341(A), (C) 38-543	
4/4/2022	PE-120	ELEC		Deadline for accepting Nonpartisan Candidate Nomination Petitions and Papers for Primary Election (applicable county and local jurisdictions)	16-311(B) 16-204	
4/15/2022	Apr 15	SOS		Deadline for filing Standing Committee 2022 1st Qtr Campaign Finance Report covering February 20, 2022 - March 31, 2022	16-927(A)(2)(b) 16-928(B)	
4/15/2022	Apr 15	SOS	ELEC	Deadline for filing PAC and Political Party 2022 1st Qtr Campaign Finance Report covering January 1, 2022 - March 31, 2022	16-927(A)(1)	



**2021-2022 ELECTION CALENDAR - AZSOS REV. 9/27/2021**

<b>4/15/2022</b>	Apr 15	SOS		Deadline for Filing Candidate 2022 1st Qtr Campaign Finance Report Covering January 1, 2022 - March 31, 2022 (Statewide and Legislative candidates)	16-927(A)(1) 16-927(B)	
<b>4/15/2022</b>	Apr 15	ELEC		Deadline for filing Candidate 2022 1st Qtr Campaign Finance Report covering February 20, 2022 - March 31, 2022 (applicable county and local races)	16-927(A)(2)(b) 16-927(B)	
<b>4/18/2022</b>	Apr 18 (10 business days after close of candidate filing)	SOS	ELEC	Deadline for filing challenges to candidate Nomination Petitions	16-351(A)	
<b>4/18/2022</b>	<b>MayE-29</b>	<b>REC</b>		<b>Last day to register to vote for May 17, 2022 Election at 11:59 p.m.</b>	<b>16-120(A)</b>	
<b>4/19/2022</b>	PE-105	BOS		Earliest day Board of Supervisors may cancel election for certain offices held under Title 15, Title 48, or 16-822 based on number of candidates who have filed Nomination Paper and appoint those candidates to the office	16-410(A)	
<b>4/20/2022</b>	MayE-27	REC		Begin early voting for May 17, 2022 Election	16-542(C)	
<b>4/20/2022</b>	MayE-27	REC		Mail early ballots for May 17, 2022 Election to voters on Permanent Early Voting List and voters who have requested a one-time ballot-by-mail	16-542(C) 16-544(F)	
<b>4/24/2022</b>	PE-100**	ELEC		Recommended deadline to order ballot cards/stock for August 2, 2022 Primary Election	16-508	<b>SUNDAY</b>
<b>4/30/2022</b>	MayE-17	ELEC	SOS	File Computer Program and Voting Equipment Certification for May 17, 2022 Election with Secretary of State	16-445(A) Procedures Manual	<b>SATURDAY</b>
<b>5/1/2022</b>	MayE-16	SOS		Begin filing Standing Committee 2022 May Pre-Election Campaign Finance Report covering April 1, 2022 - April 30, 2022	16-927(A)(2)(a) 16-928(B)	<b>SUNDAY</b>
<b>5/1/2022</b>	MayE-16	ELEC		Begin Filing Candidate 2022 May Pre-Election Campaign Finance Report Covering April 1, 2022 - April 30, 2022 (applicable county and local races)	16-927(A)(2)(a) 16-927(B)	<b>SUNDAY</b>
<b>5/1/2022</b>	PE-93	REC		Begin accepting ballot-by-mail requests for August 2, 2022 Primary Election and ballot-by-mail requests for both Primary and General Elections (UOCAVA voters and protected voters under 16-153 can request ballots before this date)	16-542(A)(B)	<b>SUNDAY</b>
<b>5/2/2022</b>	Apr 30 (moved to next business day)	SOS		Deadline for filing 2022 1st Qtr Lobbyist Expenditure Report covering January 1, 2022 - March 31, 2022	41-1232.02(B); 41-1232.03(B)	<b>SATURDAY</b>
<b>5/4/2022</b>	PE-90	ELEC		Mail Notice of August 2, 2022 Primary Election to permanent early voters	16-544(D)	
<b>5/4/2022</b>	PE-90	BOS		Accept lists of Election Board nominees submitted by political party chairmen for August 2, 2022 Primary Election	16-531(A)	
<b>5/6/2022</b>	MayE-11	REC		Deadline to accept requests for a ballot-by-mail for the May 17, 2022 election	16-542(E)	
<b>5/7/2022</b>	MayE-10	SOS		Deadline for filing Standing Committee 2022 May Pre-Election Campaign Finance Report covering April 1, 2022 - April 30, 2022	16-927(A)(2)(a) 16-928(B) 1-243(A) 1-303	<b>SATURDAY</b>
<b>5/7/2022</b>	MayE-10	ELEC		Deadline for filing Candidate 2022 May Pre-Election Campaign Finance Report Covering April 1, 2022 - April 30, 2022 (applicable county and local races)	16-927(A)(2)(a) 16-927(B) 1-243(A) 1-303	<b>SATURDAY</b>
<b>5/12/2022</b>	GE-180	BOS		Deadline for 180 day notice by Board of Supervisors for November 8, 2022 General Election	16-205(A)	
<b>5/13/2022</b>	MayE-4	ELEC		Deadline to Vote Early In-Person for the May 17, 2022 Election by 5:00 p.m.	16-542(E)	
<b>5/17/2022</b>	<b>MayE (3rd Tuesday in May)</b>	<b>ALL</b>		<b>May 17, 2022 Election</b>	<b>16-204(F)(2)</b>	

**2021-2022 ELECTION CALENDAR - AZSOS REV. 9/27/2021**

5/19/2022	PE-75**	BOS		Recommended deadline to schedule instruction classes for Precinct Election Boards for August 2, 2022 Primary Election	16-532	
5/20/2022	MayE+3 business days	REC		Last day for identification verification for Conditional Provisional Ballots and curing of early ballot affidavit signatures for May 17, 2022 Election. For counties with a 4-day work week, the deadline falls on 5/23/22.	16-579(A)(2) 16-550(A) Procedures Manual	
5/23/2022	MayE+6	BOS		First day to canvass returns for May 17, 2022 Election	16-642(A) 16-645(A)	
5/31/2022	PE-63 (9 weeks)	CCEC		Begin CCEC Primary Election Period (9 week period ending on the day of the Primary Election)	16-961(B)(4)	
5/31/2022	PE-63 (9 weeks)	CCEC		CCEC payment to qualified participating candidates	16-951(A)	
6/3/2022	PE-60	REC		Accept lists of nominees for Special Election Boards from the county party chairmen and begin appointing Special Election Boards for November 8, 2022 General Election	16-549(A)	
6/6/2022	MayE+20	BOS		Last day to canvass returns for May 17, 2022 Election	16-642(A) 16-645(A)	
6/13/2022	GE-150 = Jun 11 (Saturday)	ELEC		Begin accepting nonpartisan candidate Nomination Petitions and Papers for General Election (applicable county and local jurisdictions)	16-311(B) 16-204	<b>SATURDAY</b>
6/13/2022	PE-50**	BOS		Recommended deadline to prepare materials and supplies for instruction classes for Precinct Election Boards	16-532	
6/13/2022	PE-50**	BOS		Recommended deadline to print instructions and check list for Election Board and Inspectors	16-532	
6/18/2022	PE-45	BOS		Instruction classes for Precinct Election Boards may begin	16-532(A)	<b>SATURDAY</b>
6/18/2022	PE-45	ELEC		Prepare proof of sample ballots and: (1) Submit to each county party chairman, and (2) Mail a copy to each candidate who has properly filed a Nomination Paper	16-461(A)	<b>SATURDAY</b>
6/18/2022	PE-45	REC		Deadline for permanent early voters to notify county that an early ballot not be sent for August 2, 2022 Primary Election	16-544(F)	<b>SATURDAY</b>
6/18/2022	PE-45	REC		Mail UOCAVA ballots for all requests received on or before the 48th day before August 2, 2022 Primary Election.	16-543(A)	<b>SATURDAY</b>
6/19/2022	PE-44**	ELEC		Recommended deadline to order ballot cards/stock for November 8, 2022 General Election	16-508	<b>SUNDAY</b>
6/23/2022	PE-40	ELEC		Last day to accept suggestions from county party chairmen on changes to sample ballot due to error or omission	16-461(B)	
6/23/2022	PE-40	BOS		Print sample ballots	16-461(B), (C)	
6/23/2022	PE-40	SOS	ELEC	Deadline for Write-in Candidate Nomination Papers for August 2, 2022 Primary Election at 5:00 p.m.	16-312(B)	
6/24/2022	PE-39**	SOS	ELEC	Deliver notice of Write-in Candidates who have filed Nomination Papers	16-312(E) Procedures Manual	
6/24/2022	PE-39**	BOS		Include list of eligible Write-in Candidates in supplies for Precinct Inspectors	16-312(C), (E)	
6/29/2022	(EV-7)	SOS	BOS	Begin Logic and Accuracy Tests before early voting for the Primary Election for accessible voting system units	16-449 Procedures Manual	
6/30/2022	PE-33	BOS		Print early ballots and deliver to County Recorder	16-503 16-545(B)(1)	
6/30/2022	PE-33**	REC		Print instructions and envelopes needed for early voting for the August 2, 2022 Primary Election	16-547(C)	
6/30/2022	PE-33**	REC		Recommended deadline to appoint Special Election Boards	16-549(A)	
7/1/2022	Jul 1	SOS		Begin filing Standing Committee 2022 2nd Qtr Campaign Finance Report covering May 1, 2022 - June 30, 2022	16-927(A)(2)(b) 16-928(B)	
7/1/2022	Jul 1	ELEC		Begin filing PAC and Political Party 2022 2nd Qtr Campaign Finance Report covering April 1, 2022 - June 30, 2022	16-927(A)(1)	

**2021-2022 ELECTION CALENDAR - AZSOS REV. 9/27/2021**

7/1/2022	Jul 1	ELEC		Begin filing Candidate 2022 2nd Qtr Campaign Finance Report covering April 1, 2022 - June 30, 2022 (Statewide and Legislative candidates)	16-927(A)(1) 16-927(B)	
7/1/2022	Jul 1	ELEC		Begin filing Candidate 2022 2nd Qtr Campaign Finance Report covering May 1, 2022 - June 30, 2022 (applicable county and local races)	16-927(A)(2)(b) 16-927(B)	
7/1/2022	Jul 1	SOS		Begin filing 2022 2nd Qtr Lobbyist Expenditure Report covering April 1, 2022 - June 30, 2022	41-1232.02(B) 41-1232.03(B)	
7/1/2022	PE-32**	BOS		Recommended date to begin accepting political party election observer lists submitted by county party chairmen for August 2, 2022 Primary Election	16-590	
7/1/2022	PE-32**	BOS		Designate locations for Central Counting Place Boards, Precinct Boards, Early Boards, Data Processing Boards and Receiving Site Boards	Procedures Manual	
7/5/2022	<b>July 4 (PE-29; Holiday, moved to next business day)</b>	REC		<b>Last day to register to vote for August 2, 2022 Primary Election at 11:59 p.m.</b>	<b>16-120(A)</b>	<b>HOLIDAY (Registrations accepted until 7/5 at midnight)</b>
7/5/2022	PE-29 (moved to next business day)	SOS	REC	Begin compiling county-provided Primary Election Voter Registration Report	16-168(G)(1)(c)	<b>HOLIDAY</b>
7/5/2022	PE-29** (moved to next business day)	BOS		Recommended deadline for designating locations for Receiving Sites, Central Counting Place, Computer Center and Early Processing Center	16-551	<b>HOLIDAY</b>
7/6/2022	PE-27	SOS		Deadline to submit arguments for or against statewide Ballot Measures	19-124(A)(B)	
7/6/2022	PE-27	REC		Begin early voting for August 2, 2022 Primary Election	16-542(C)	
7/6/2022	PE-27	REC		Mail early ballots for August 2, 2022 Primary Election to voters on Permanent Early Voting List and voters who have requested a one-time ballot-by-mail	16-544(F)	
7/7/2022	GE - 4 months and 1 day	SOS		Deadline for filing statewide initiative petitions with the Secretary of State	Const. Art. IV, Pt. 1 § 1(4)	
7/11/2022	GE-120	ELEC		Deadline for accepting Nonpartisan Candidate Nomination Petitions and Papers for General Election (applicable county and local jurisdictions)	16-311(B) 16-204	
7/13/2022	July 13 (8 days after close of registration)	REC		Deliver complete copies of precinct registers to county and state party chairmen	16-168(C)	
7/13/2022	PE-20	BOS		Designate polling places (except for special district and mail ballot elections)	16-411(B)	
7/13/2022	PE-20	BOS		Appoint all Election Boards	16-531 16-535 16-551	
7/15/2022	Jul 15	SOS		Deadline for filing Standing Committee 2022 2nd Qtr Campaign Finance Report covering May 1, 2022 - June 30, 2022	16-927(A)(2)(b) 16-928(B)	
7/15/2022	Jul 15	SOS	ELEC	Deadline for filing PAC and Political Party 2022 2nd Qtr Campaign Finance Report covering April 1, 2022 - June 30, 2022	16-927(A)(1)	
7/15/2022	Jul 15	SOS		Deadline for filing Candidate 2022 2nd Qtr Campaign Finance Report covering April 1, 2022 - June 30, 2022 (Statewide and Legislative candidates)	16-927(A)(1) 16-927(B)	
7/15/2022	Jul 15	ELEC		Deadline for filing Candidate 2022 2nd Qtr Campaign Finance Report covering May 1, 2022 - June 30, 2022 (applicable county and local races)	16-927(A)(2)(b) 16-927(B)	
7/15/2022	PE-18**	BOS		Recommended deadline to outline polling place support plan for General Election Day	**	
7/16/2022	PE-17	BOS	SOS	File Computer Program and Voting Equipment Certification for August 2, 2022 Primary Election with Secretary of State	16-445(A) Procedures Manual	<b>SATURDAY</b>
7/16/2022	PE-17	SOS		SOS performs Logic and Accuracy tests within 17 days of August 2, 2022 Primary Election - Notify public 48 hours in advance	16-449(A) Procedures Manual	<b>SATURDAY</b>

**2021-2022 ELECTION CALENDAR - AZSOS REV. 9/27/2021**

7/17/2022	PE-16	SOS		Begin filing Standing Committee 2022 Pre-Primary Campaign Finance Report covering July 1, 2022 - July 16, 2022	16-927(A)(2)(a) 16-928(B)	<b>SUNDAY</b>
7/17/2022	PE-16	SOS	ELEC	Begin filing PAC and Political Party 2022 Pre-Primary Campaign Finance Report covering July 1, 2022 - July 16, 2022	16-927(A)(2)(a)	<b>SUNDAY</b>
7/17/2022	PE-16	SOS		Begin filing Candidate 2022 Pre-Primary Campaign Finance Report covering July 1, 2022 - July 16, 2022 (Statewide and Legislative candidates)	16-927(A)(2)(a) 16-927(B)	<b>SUNDAY</b>
7/17/2022	PE-16	ELEC		Begin filing Candidate 2022 Pre-Primary Campaign Finance Report covering July 1, 2022 - July 16, 2022 (applicable county and local races)	16-927(A)(2)(a) 16-927(B)	<b>SUNDAY</b>
7/19/2022	PE-14**	BOS		Mail notice to county party chairmen as to time and place when voting devices can be inspected	16-447(B)	
7/22/2022	PE-11	REC		Deadline for accepting requests for assistance by Special Election Board due to "continuing" illness at 5:00 p.m.	16-549(C)	
7/22/2022	PE-11	REC		Deadline for accepting requests for a ballot-by-mail for August 2, 2022 Primary Election	16-542(E)	
7/22/2022	PE-11	BOS		Mail sample ballots	16-461(D)	
7/22/2022	PE-11 (after 5:00 p.m. on 2nd Friday prior to PE)	REC		Begin accepting requests for assistance by Special Election Board due to "unanticipated" illness or disability	16-549(D)	
7/23/2022	PE-10	SOS		Deadline for the Vote Count Verification Committee to meet and consider revision of the designated margins to be used in the hand count audit, which will be simultaneously posted to the Secretary of State's web site.	16-602(K)(4)	<b>SATURDAY</b>
7/23/2022	PE-10	REC		Prepare official precinct registers	16-168(A)	<b>SATURDAY</b>
7/23/2022	PE-10**	REC		Provide inactive voter list to each precinct on or before Election Day	16-583(A)	<b>SATURDAY</b>
7/23/2022	PE-10	SOS		Deadline for filing Standing Committee 2022 Pre-Primary Campaign Finance Report covering July 1, 2022 - July 16, 2022	16-927(A)(2)(a) 16-928(B) 1-243(A) 1-303	<b>SATURDAY</b>
7/23/2022	PE-10	SOS	ELEC	Deadline for Filing PAC and Political Party 2022 Pre-Primary Campaign Finance Report Covering July 1, 2022 - July 16, 2022	16-927(A)(2)(a) 1-243(A) 1-303	<b>SATURDAY</b>
7/23/2022	PE-10	SOS		Deadline for filing Candidate 2022 Pre-Primary Campaign Finance Report covering July 1, 2022 - July 16, 2022 (Statewide and Legislative candidates)	16-927(A)(2)(a) 16-927(B) 1-243(A) 1-303	<b>SATURDAY</b>
7/23/2022	PE-10	ELEC		Deadline for filing Candidate 2022 Pre-Primary Campaign Finance Report covering July 1, 2022 - July 16, 2022 (applicable county and local races)	16-927(A)(2)(a) 16-927(B) 1-243(A) 1-303	<b>SATURDAY</b>
7/25/2022	10 business days after close of candidate filing	ELEC		Deadline for filing challenges to Candidate Nonpartisan Nomination Petitions for the General Election	16-351(A)	
7/25/2022	PE-8 (2nd Monday Prior to PE)	BOS	ELEC	Complete tabulation contingency plans	Procedures Manual	
7/26/2022	PE-7**	BOS		Recommended deadline to complete ballot and supply dispersal plan	16-509	
7/26/2022	PE-7	ELEC		Deadline for political parties to provide names of persons intending to participate in hand count by 5:00 p.m.	16-602(B)(7)	
7/26/2022	PE-7	CCEC	SOS	Deadline for filing Application for Certification form with the Secretary of State as a CCEC participating candidate	16-947(A) 16-961(B)(3)	
7/26/2022	PE-7	CCEC	SOS	End of CCEC Qualifying Period for 2022 Election, covers August 1, 2021 - July 26, 2022	16-961(B)(3)	
7/26/2022	GE-105	BOS		Earliest day Board of Supervisors may cancel election for certain offices held under Title 15, Title 48, or 16-822 based on number of candidates who have filed Nomination Paper and appoint those candidates to the office	16-410(A)	



**2021-2022 ELECTION CALENDAR - AZSOS REV. 9/27/2021**

<b>7/27/2022</b>	PE-6 (Wednesday prior to PE)	ELEC		Deadline for officer in charge of elections to notify political parties of shortage in number of persons intending to participate in hand count by 9:00 a.m.	16-602(B)(7)	
<b>7/28/2022</b>	PE-5 (Thursday prior to PE)	ELEC		Deadline for political parties to provide sufficient number of additional persons to cover hand count board shortages by 5:00 p.m.	16-602(B)(7)	
<b>7/29/2022</b>	PE-4 (Friday prior to PE)	REC		Deadline for "overseas" voter as defined in UOCAVA who was recently discharged or separated from employment to register to vote for the Primary Election at 5:00 p.m.	16-103(D)	
<b>7/29/2022</b>	PE-4	ELEC		Deadline to Vote Early In-Person for the August 2, 2022 Primary Election by 5:00 p.m.	16-542(E)	
<b>7/29/2022</b>	Jul 29	ELEC		Begin emergency early voting in a manner prescribed by the BOS; available to electors who experience an emergency between 5:00 p.m. on July 29, 2022 and 5:00 p.m. on Aug. 1, 2022 that would prevent them from voting at the polls	16-542(H)	
<b>7/31/2022</b>	PE-2	BOS		If BOS fails to designate polling places, the Justice of the Peace may designate polling places	16-411(C)	<b>SUNDAY</b>
<b>7/31/2022</b>	PE-2	BOS		Deliver ballots to Inspector	16-509	<b>SUNDAY</b>
<b>8/1/2022</b>	Jul 31 (moved to next business day)	SOS		Deadline for filing 2022 2nd Qtr Lobbyist Expenditure Report covering April 1, 2022 - June 30, 2022	41-1232.02(B) 41-1232.03(B)	<b>SUNDAY</b>
<b>8/1/2022</b>	PE-1**	BOS		Recommended deadline to complete instruction classes for Precinct Boards, Receiving and Central Counting Place Boards and Data Processing Boards	16-532	
<b>8/1/2022</b>	PE-1**	BOS		Recommended deadline to deliver polling place supplies	16-404 16-405 16-447 16-511	
<b>8/1/2022</b>	PE-1	REC		Deadline for Accepting Requests for Assistance by Special Election Board due to "Unanticipated" Illness or Disability	16-549(D)	
<b>8/1/2022</b>	PE-1	REC		Deliver list of all electors who were issued early ballots to Precinct Inspectors	16-542(G)	
<b>8/1/2022</b>	PE-1**	BOS		Recommended deadline to deliver list of qualified write-in candidates to Inspector to be posted in polling place on Election Day	16-312(E)	
<b>8/2/2022</b>	<b>PE</b>	<b>ALL</b>		<b>August 2, 2022 Primary Election</b>	<b>16-201 16-204(E)(1) 16-204(F) 16-206(A)</b>	
<b>8/2/2022</b>	PE	REC		Continue delivery of early ballots to Early Boards for processing until 7:00 p.m.	16-551(C)	
<b>8/2/2022</b>	PE	REC		Deadline for uniformed and overseas citizens residing outside of Arizona to register to vote for the Primary Election at 7:00 p.m.	16-103(C)	
<b>8/2/2022</b>	PE	CCEC		End of CCEC Primary Election Period	16-961(B)(4)	
<b>8/3/2022</b>	PE+1	ELEC		Hand count begins within 24 hours of the closing of the polls	16-602(I) Procedures Manual	
<b>8/3/2022</b>	PE+1	ELEC		Select by lot 2% of precincts/vote centers and perform hand count on those ballots; randomly select from sequestered early ballot batches a number equal to 1% of early ballots cast or 5,000 early ballots (whichever is less) for manual audit	16-602(B)(1) 16-602(F) Procedures Manual	
<b>8/3/2022</b>	PE+1	ELEC		Select contested races to be hand counted	16-602(B)(2) 16-602(C)	
<b>8/3/2022</b>	PE+1	CCEC		Begin CCEC General Election Period	16-961(B)(5)	
<b>8/3/2022</b>	PE+1	CCEC		CCEC payment to qualified participating candidates	16-951(C)	
<b>8/3/2022</b>	PE+1	CCEC		CCEC candidates to return monies above sufficient amount to pay unpaid bills during Primary Election Period	16-953(A)	

**2021-2022 ELECTION CALENDAR - AZSOS REV. 9/27/2021**

<b>8/4/2022</b>	Filing date+ 20 business days (Date may vary for early filings)	SOS		Deadline for Secretary of State to remove ineligible initiative petition sheets and signatures and transmit random sample to County Recorders	19-121.01(A) 19-121.01(B) 19-121.01(D)	
<b>8/7/2022</b>	GE-93	REC		Begin accepting requests for early ballots for the November 8, 2022 General Election (UOCAVA voters and protected voters can request ballots before this date)	16-542(A)(B) 16-153	<b>SUNDAY</b>
<b>8/7/2022</b>	GE-93**	REC		Begin accepting requests for assistance by Special Election Board due to "continuing" illness	16-549	<b>SUNDAY</b>
<b>8/8/2022</b>	PE+1st Monday	BOS		Deadline to hear early ballot challenges (by 5:00 p.m.)	16-552(E)	
<b>8/8/2022</b>	PE+6	BOS		First day to canvass returns for August 2, 2022 Primary Election, and issue Letters of Nomination and Certificates of Election	16-642(A) 16-645(A)	
<b>8/9/2022</b>	PE+5 Business Days	REC		Last day for identification verification for Conditional Provisional Ballots and curing of early ballot affidavit signatures. For counties that have a 4-day work week, the deadline will be the next business day: 8/10/2022.	16-579(A)(2) 16-550(A) Procedures Manual	
<b>8/9/2022</b>	PE+5 business days	REC		Deadline to process provisional ballots from the August 2, 2022 Primary Election	16-135(D) 16-584(E)	
<b>8/10/2022</b>	GE-90	BOS		Accept lists submitted by party chairmen of Election Board nominees for November 8, 2022 General Election	16-531(A)	
<b>8/10/2022</b>	GE-90	SOS	CLK	Begin accepting retention paperwork for judicial officers of Supreme and Appellate courts (SOS) and Superior Court (CLK)	Const. Art. VI § 38(A)	
<b>8/16/2022</b>	PE+14	BOS		Last day to canvass returns for August 2, 2022 Primary Election, and issue Letters of Nomination and Certificates of Election (NOTE: 16-642(A) allows governing body to canvass up to 20 days following an election. However, 16-645(B) requires BOS to deliver canvass to SOS within 14 days after Primary Election)	16-642(A) 16-645(A), (B)	
<b>8/16/2022</b>	PE+14	BOS		Deliver Canvass to Secretary of State	16-645(B)	
<b>8/22/2022</b>	<b>PE+ 3d Monday</b>	<b>SOS</b>		<b>OFFICIAL CANVASS OF THE AUGUST 2, 2022 PRIMARY ELECTION</b> <b>Canvass returns for all Federal, Statewide, and Legislative Offices</b>	<b>16-645(B)</b>	
<b>8/22/2022</b>	PE+ 3d Monday	SOS		Issue Letters of Nomination to all prevailing Federal, Statewide, and Legislative candidates who filed Nomination Papers with the Secretary of State	16-645(B)	
<b>8/25/2022</b>	GE-75**	BOS		Recommended deadline to schedule instruction classes for Precinct Election Boards for November 8, 2022 General Election	16-532	
<b>8/25/2022</b>	Receipt of Random Sample +15 Business Days (Date may vary for early filings)	REC		Deadline for County Recorders to verify initiative petition signatures and provide certified results to the Secretary of State	19-121.02	
<b>8/30/2022</b>	GE-70	CCEC	SOS	Deadline for participating candidate to file Application to Receive Funds and Qualifying Contributions Report with original qualifying slips to the Secretary of State	16-950(B)	
<b>8/30/2022</b>	72 hours (business days only) after receipt of certification from County Recorders (Date may vary for early filings)	SOS		Deadline for Secretary of State to determine initiative petition results of random sample, issue receipt to sponsor committee, and notify Governor	19-121.04	
<b>9/1/2022</b>	PE+30	CCEC		CCEC candidates shall pay uncontested / unpaid bills from Primary Election	16-953(C)	
<b>9/9/2022</b>	GE-60	REC		Accept list of nominees for Special Election Boards from the county party chairmen and begin appointing Special Election Boards for November 8, 2022 General Election	16-549(A)	

**2021-2022 ELECTION CALENDAR - AZSOS REV. 9/27/2021**

9/9/2022	GE-60	SOS	ELEC	Deadline to accept retention paperwork for judicial officers of Supreme and Appellate courts (SOS) and Superior Court (CLK)	Const. Art. VI § 38(A)	
9/15/2022	MarE-180	BOS		Deadline for 180 day notice by Board of Supervisors for March 14, 2023 Election	16-205	
9/19/2022	GE-50**	BOS		Recommended deadline to prepare materials and supplies for instruction classes for Precinct Election Boards	16-532	
9/19/2022	GE-50**	BOS		Recommended deadline to print instructions and check list for Election Board and Inspectors	16-532	
9/24/2022	GE-45	BOS		Prepare proof of sample ballots and submit to each county party chairman; Mail a copy to each candidate whose name did not appear on the Primary Election ballot	16-461(A)	<b>SATURDAY</b>
9/24/2022	GE-45	BOS		Begin instruction classes for Precinct Election Boards	16-532	<b>SATURDAY</b>
9/24/2022	GE-45	REC		Deadline for permanent early voters to notify county that an early ballot not be sent for November 8, 2022 General Election	16-544(F)	<b>SATURDAY</b>
9/24/2022	GE-45	REC		Mail UOCAVA ballots for all requests received on or before the 48th day before November 8, 2022 General Election.	16-543(A)	<b>SATURDAY</b>
9/26/2022	GE-43**	SOS		Recommended date to mail or e-mail a Publicity Pamphlet to every household that contains a registered voter	19-123(B) 19-123(C)	
9/29/2022	GE-40	BOS		Last day to accept suggestions from county party chairmen on changes to sample ballot due to error or omission	16-461(B)	
9/29/2022	GE-40	SOS	ELEC	Deadline for Write-in Candidate Nomination Papers for General Election at 5:00 p.m.	16-312(B)	
9/30/2022	GE-39**	SOS	ELEC	Recommended date to deliver notice to counties of Write-in Candidates filing Nomination Papers with Secretary of State	16-312(E)	
9/30/2022	GE-39**	BOS		Include list of eligible Write-in Candidates in supplies for Precinct Inspectors	16-312(E)	
10/1/2022	Oct 1	SOS		Begin filing Standing Committee 2022 3rd Qtr Campaign Finance Report covering July 17, 2022 - September 30, 2022	16-927(A)(2)(b) 16-928(B)	<b>SATURDAY</b>
10/1/2022	Oct 1	SOS	ELEC	Begin filing PAC and Political Party 2022 3rd Qtr Campaign Finance Report covering July 17, 2022 - September 30, 2022	16-927(A)(2)(b)	<b>SATURDAY</b>
10/1/2022	Oct 1	SOS		Begin filing Candidate 2022 3rd Qtr Campaign Finance Report covering July 17, 2022 - September 30, 2022 (Statewide and Legislative candidates)	16-927(A)(2)(b) 16-927(B)	<b>SATURDAY</b>
10/1/2022	Oct 1	ELEC		Begin filing Candidate 2022 3rd Qtr Campaign Finance Report covering July 17, 2022 - September 30, 2022 (applicable county and local races)	16-927(A)(2)(b) 16-927(B)	<b>SATURDAY</b>
10/1/2022	Oct 1	SOS		Begin filing 2022 3rd Qtr Lobbyist Expenditure Report covering July 1, 2022 - September 30, 2022	41-1232.02(B) 41-1232.03(B)	<b>SATURDAY</b>
10/5/2022	(EV-7)	SOS	BOS	Logic and Accuracy Tests begin for accessible voting system units before early voting for General Election	16-449 Procedures Manual	
10/6/2022	GE-33	BOS		Print early ballots and deliver to County Recorders	16-503 16-545	
10/9/2022	GE-30**	BOS		Recommended date to begin accepting political party election observer lists submitted by county party chairmen for November 8, 2022 General Election	16-590(A)	<b>SUNDAY</b>
10/9/2022	GE-30			Deadline for Issuance of Proclamation of General Election by Governor	16-214	<b>SUNDAY</b>
10/11/2022	<b>Oct 10 (GE-29, moved to next business day)</b>	<b>REC</b>		<b>Last day to register to vote for November 8, 2022 General Election at 11:59 p.m.</b>	<b>16-120(A)</b>	<b>HOLIDAY</b>
10/11/2022	Oct 10	SOS	REC	Begin compiling county-provided General Election Voter Registration Report	16-168(G)(1)(d)	<b>HOLIDAY</b>
10/12/2022	GE-27	REC		Begin early voting for November 8, 2022 General Election	16-542(C)	

**2021-2022 ELECTION CALENDAR - AZSOS REV. 9/27/2021**

10/12/2022	GE-27	REC		Mail early ballots for November 8, 2022 General Election to voters on Permanent Early Voting List and voters who requested a one-time ballot-by-mail	16-544(F)	
10/14/2022	GE-25**	BOS		Recommended deadline to print challenge lists and payroll vouchers	16-536 16-594	
10/14/2022	GE-25**	BOS		Recommended deadline to have ballot labels ready for voting devices	16-405	
10/14/2022	GE-25**	BOS		Recommended deadline to print poll lists	16-516	
10/14/2022	GE-25**	BOS		Recommended deadline to print official and unofficial return envelopes	16-511(A) 16-615 16-616	
10/14/2022	GE-25**	BOS		Recommended deadline to print duplicate ballot report forms	16-608(A)	
10/15/2022	Oct 15	SOS		Deadline for filing Standing Committee 2022 3rd Qtr Campaign Finance Report covering July 17, 2022 - September 30, 2022	16-927(A)(2)(b) 16-928(B)	<b>SATURDAY</b>
10/15/2022	Oct 15	SOS	ELEC	Deadline for filing PAC and Political Party 2022 3rd Qtr Campaign Finance Report covering July 17, 2022 - September 30, 2022	16-927(A)(2)(b)	<b>SATURDAY</b>
10/15/2022	Oct 15	SOS		Deadline for filing Candidate 2022 3rd Qtr Campaign Finance Report covering July 17, 2022 - September 30, 2022 (Statewide and Legislative candidates)	16-927(A)(2)(b) 16-927(B)	<b>SATURDAY</b>
10/15/2022	Oct 15	ELEC		Deadline for filing Candidate 2022 3rd Qtr Campaign Finance Report covering July 17, 2022 - September 30, 2022 (applicable county and local races)	16-927(A)(2)(b) 16-927(B)	<b>SATURDAY</b>
10/19/2022	Oct 19 (8 days after close of registration)	REC		Deliver complete copies of precinct registers to county and state party chairmen	16-168(C)	
10/19/2022	GE-20	BOS		Deadline to designate polling places (except for special district and mail ballot elections)	16-411(B)	
10/19/2022	GE-20	BOS		Appoint all Election Boards	16-531 16-535 16-551	
10/21/2022	GE-18**	BOS		Recommended deadline to print log books and forms for Receiving Sites, Central Counting Place, Computer Center and Early Ballot Processing Center	16-608	
10/21/2022	GE-18**	BOS		Recommended deadline to outline polling place support plan for General Election Day	**	
10/22/2022	GE-17	SOS	BOS	Perform Logic and Accuracy Tests within 17 days of November 8, 2022 General Election - Notify public 48 hours in advance	16-449(A) Procedures Manual	<b>SATURDAY</b>
10/22/2022	GE-17	BOS	SOS	File Computer Program and Voting Equipment Certification for November 8, 2022 General Election with Secretary of State	16-445(A) Procedures Manual	<b>SATURDAY</b>
10/23/2022	GE-16	SOS		Begin filing Standing Committee 2022 Pre-General Campaign Finance Report covering October 1, 2022 - October 22, 2022	16-927(A)(2)(a) 16-928(B)	<b>SUNDAY</b>
10/23/2022	GE-16	SOS	ELEC	Begin filing PAC and Political Party 2022 Pre-General Campaign Finance Report covering October 1, 2022 - October 22, 2022	16-927(A)(2)(a)	<b>SUNDAY</b>
10/23/2022	GE-16	SOS		Begin filing Candidate 2022 Pre-General Campaign Finance Report covering October 1, 2022 - October 22, 2022 (Statewide and Legislative candidates)	16-927(A)(2)(a) 16-927(B)	<b>SUNDAY</b>
10/23/2022	GE-16	ELEC		Begin filing Candidate 2022 Pre-General Campaign Finance Report covering October 1, 2022 - October 22, 2022 (applicable county and local races)	16-927(A)(2)(a) 16-927(B)	<b>SUNDAY</b>
10/25/2022	GE-14**	BOS		Mail notice to county party chairmen as to time and place when voting devices can be inspected	16-447(B)	
10/28/2022	GE-11	REC		Deadline for accepting requests for a ballot-by-mail for November 8, 2022 General Election	16-542(E)	
10/28/2022	GE-11	BOS		Mail sample ballot to every household that contains a registered voter not on the Permanent Early Voting List	16-510(C)	

**2021-2022 ELECTION CALENDAR - AZSOS REV. 9/27/2021**

<b>10/28/2022</b>	GE-11 (2nd Friday prior to GE)	REC		Deadline for accepting requests for assistance by Special Election Board due to "continuing" illness or disability at 5:00 p.m.	16-549(C)	
<b>10/29/2022</b>	GE-10	SOS		Deadline for filing Standing Committee 2022 Pre-General Campaign Finance Report covering October 1, 2022 - October 22, 2022	16-927(A)(2)(a) 16-928(B) 1-243(A) 1-303	<b>SATURDAY</b>
<b>10/29/2022</b>	GE-10	SOS	ELEC	Deadline for filing PAC and Political Party 2022 Pre-General Campaign Finance Report covering October 1, 2022 - October 22, 2022	16-927(A)(2)(a) 1-243(A) 1-303	<b>SATURDAY</b>
<b>10/29/2022</b>	GE-10	SOS		Deadline for Filing Candidate 2022 Pre-General Campaign Finance Report Covering October 1, 2022 - October 22, 2022 (Statewide and Legislative candidates)	16-927(A)(2)(a) 16-927(B) 1-243(A) 1-303	<b>SATURDAY</b>
<b>10/29/2022</b>	GE-10	ELEC		Deadline for Filing Candidate 2022 Pre-General Campaign Finance Report Covering October 1, 2022 - October 22, 2022 (applicable county and local races)	16-927(A)(2)(a) 16-927(B) 1-243(A) 1-303	<b>SATURDAY</b>
<b>10/29/2022</b>	GE-10	SOS		Deadline for the Vote Count Verification Committee to meet and consider revision of the designated margins to be used in the hand count audit, which will be simultaneously posted to the Secretary of State's web site.	16-602(K)(4)	<b>SATURDAY</b>
<b>10/29/2022</b>	(After 2nd Friday before GE)	REC		Begin accepting requests for assistance by Special Election Board due to "unanticipated" illness or disability	16-549(D)	<b>SATURDAY</b>
<b>10/29/2022</b>	GE-10	BOS		Deadline to publish Election Proclamation made by Governor	16-214(C)	<b>SATURDAY</b>
<b>10/29/2022</b>	GE-10	REC		Prepare official precinct registers	16-168(A)	<b>SATURDAY</b>
<b>10/29/2022</b>	GE-10	REC		Provide inactive voter list to each precinct on or before Election Day	16-583*	<b>SATURDAY</b>
<b>10/31/2022</b>	October 31	SOS		Deadline for filing 2022 3rd Qtr Lobbyist Expenditure Report covering July 1, 2022 - September 30, 2022	41-1232.02(B) 41-1232.03(B)	
<b>11/1/2022</b>	GE-7 (Tuesday preceding GE)	ELEC		Deadline for political parties to provide names of persons intending to participate in hand count by 5:00 p.m.	16-602(B)(7)	
<b>11/2/2022</b>	GE-6 (Wednesday preceding GE)	ELEC		Deadline for officer in charge of elections to notify political parties of shortage in number of persons intending to participate in hand count by 9:00 a.m.	16-602(B)(7)	
<b>11/3/2022</b>	GE-5 (Thursday preceding GE)	ELEC		Deadline for political parties to provide sufficient number of additional persons to cover hand count board shortages by 5:00 p.m.	16-602(B)(7)	
<b>11/4/2022</b>	GE-4 (Friday preceding GE)	REC		Deadline for "overseas" voter as defined in UOCAVA who was recently discharged or separated from employment to register to vote for the General Election at 5:00 p.m.	16-103(D)	
<b>11/4/2022</b>	GE-4	ELEC		Deadline to Vote Early In-Person for the November 8, 2022 General Election by 5:00 p.m.	16-542(E)	
<b>11/4/2022</b>	Nov 4	ELEC		Begin emergency early voting in a manner prescribed by the BOS due to an emergency occurring between 5:00 p.m. on Nov. 4, 2022 and 5:00 p.m. on Nov. 7, 2022 that would prevent the elector from voting at the polls	16-542(H)	
<b>11/6/2022</b>	GE-2	BOS		If BOS fails to designate polling places, the Justice of the Peace may designate polling places	16-411(C)	<b>SUNDAY</b>
<b>11/6/2022</b>	GE-2	BOS		Deliver ballots to Inspector	16-509	<b>SUNDAY</b>
<b>11/7/2022</b>	GE-1	BOS		Complete instruction classes for Precinct Boards, Receiving and Central Counting Place Boards and Data Processing Boards	16-532	
<b>11/7/2022</b>	GE-1	BOS		Deliver polling place supplies	16-404 16-447(D) 16-511	
<b>11/7/2022</b>	GE-1	REC		Deadline for accepting requests for assistance by Special Election Board due to "unanticipated" illness or disability	16-549(D)	

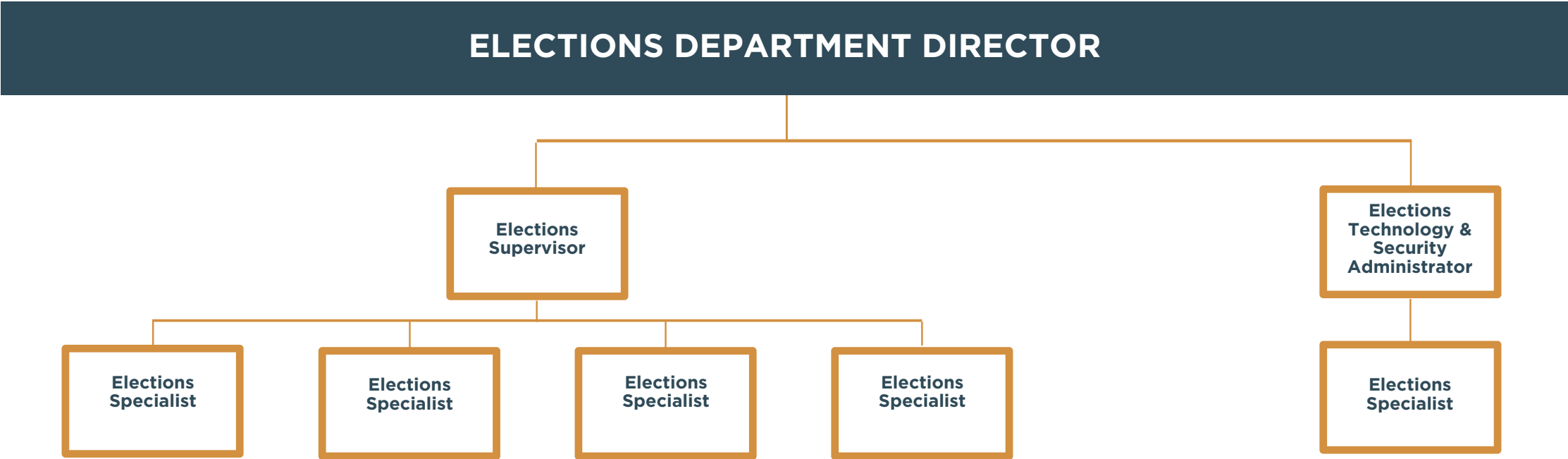
**2021-2022 ELECTION CALENDAR - AZSOS REV. 9/27/2021**

11/7/2022	GE-1	REC		Deliver list of all electors who were issued early ballots to Precinct Inspectors	16-542(G)	
11/7/2022	GE-1**	BOS		Recommended deadline to deliver lists of qualified Write-in Candidates to Inspector to be posted in polling place on Election Day	16-312(E)	
11/8/2022	GE	ALL		<b>November 8, 2022 General Election</b>	<b>16-204(E)(2) 16-204(F)(4) 16-206(A) 16-211</b>	
11/8/2022	GE	REC		Continue delivery of early ballots to Early Boards for processing until 7:00 p.m.	16-551(C)	
11/8/2022	GE	REC		Deadline for UOCAVA voters temporarily absent from the state to register to vote for November 8, 2022 General Election at 7:00 p.m.	16-103(C)	
11/8/2022	GE	CCEC		End of CCEC General Election Period	16-961(B)(5)	
11/9/2022	GE+1	ELEC		Hand count audit begins within 24 hours of the closing of the polls	16-602(I)	
11/9/2022	GE+1	ELEC		Select by lot 2% of precincts/vote centers and perform hand count on those ballots; randomly select from sequestered early ballot batches a number equal to 1% of early ballots cast or 5,000 early ballots (whichever is less) for manual audit	16-602(B)(1) 16-602(F) Procedures Manual	
11/9/2022	GE+1	ELEC		Select contested races to be hand counted	16-602(B)(2) 16-602(C)	
11/9/2022	GE+1	CCEC		Candidates to return monies above sufficient amount to pay unpaid bills during General Election Period	16-953(B)	
11/9/2022	GE+1	CCEC	SOS	Begin CCEC Exploratory Period for candidates for 2024 Election. Exploratory period covers November 9, 2022 - July 31, 2023	16-961(B)(2)	
11/14/2022	GE+6	BOS		Deadline to hear early ballot challenges (by 5:00 p.m.)	16-552(E)	
11/14/2022	GE+6	BOS		First day to canvass returns for November 8, 2022 General Election, and issue Certificates of Election for County and Local offices	16-642(A) 16-645(A)	
11/16/2022	GE+5 Business Days	REC		Last day for identification verification for Conditional Provisional Ballots and curing of early ballot affidavit signatures. For counties that have a 4-day work week, the deadline will be the next business day: 11/17/2022.	16-579(A)(2) 16-550(A) Procedures Manual	
11/17/2022	MayE-180	BOS		Deadline for 180 day notice by Board of Supervisors for May 16, 2023 Election	16-205	
11/18/2022	GE+10	REC		Deadline to process Provisional Ballots from the November 8, 2022 General Election	16-135(D) 16-584(E)	
11/28/2022	GE+20	BOS		Last day to canvass returns for November 8, 2022 General Election, and issue Certificates of Election for County and Local Offices	16-642(A) 16-645(A)	
12/1/2022	Dec 1	SOS		Begin filing Biennial Principal or Public Body Registration Renewal for 2023 - 2024	41-1232(C) 41-1232.01(C)	
12/5/2022	GE+ 4th Monday	SOS		<b>OFFICIAL CANVASS OF THE NOVEMBER 8, 2022 GENERAL ELECTION</b> <b>Canvass returns for all Federal, Statewide, and Legislative Offices, Supreme and Appellate Judicial Officers, and all Statewide Ballot Measures</b>	<b>Const. Art V § 10 16-648(A)</b>	
12/5/2022	GE+ 4th Monday	SOS		First day to issue Certificates of Election to all prevailing Federal, Statewide, and Legislative candidates who filed Nomination Papers with the Secretary of State	Const. Art V § 10 16-650	
12/5/2022	GE + 4th Monday			Upon completion of Canvass, Governor shall issue Proclamation on Constitutional Amendments and Measures	16-651	
12/8/2022	GE+30	CCEC		Clean Elections candidates shall pay uncontested and unpaid bills from General Election	16-953(C)	

**2021-2022 ELECTION CALENDAR - AZSOS REV. 9/27/2021**

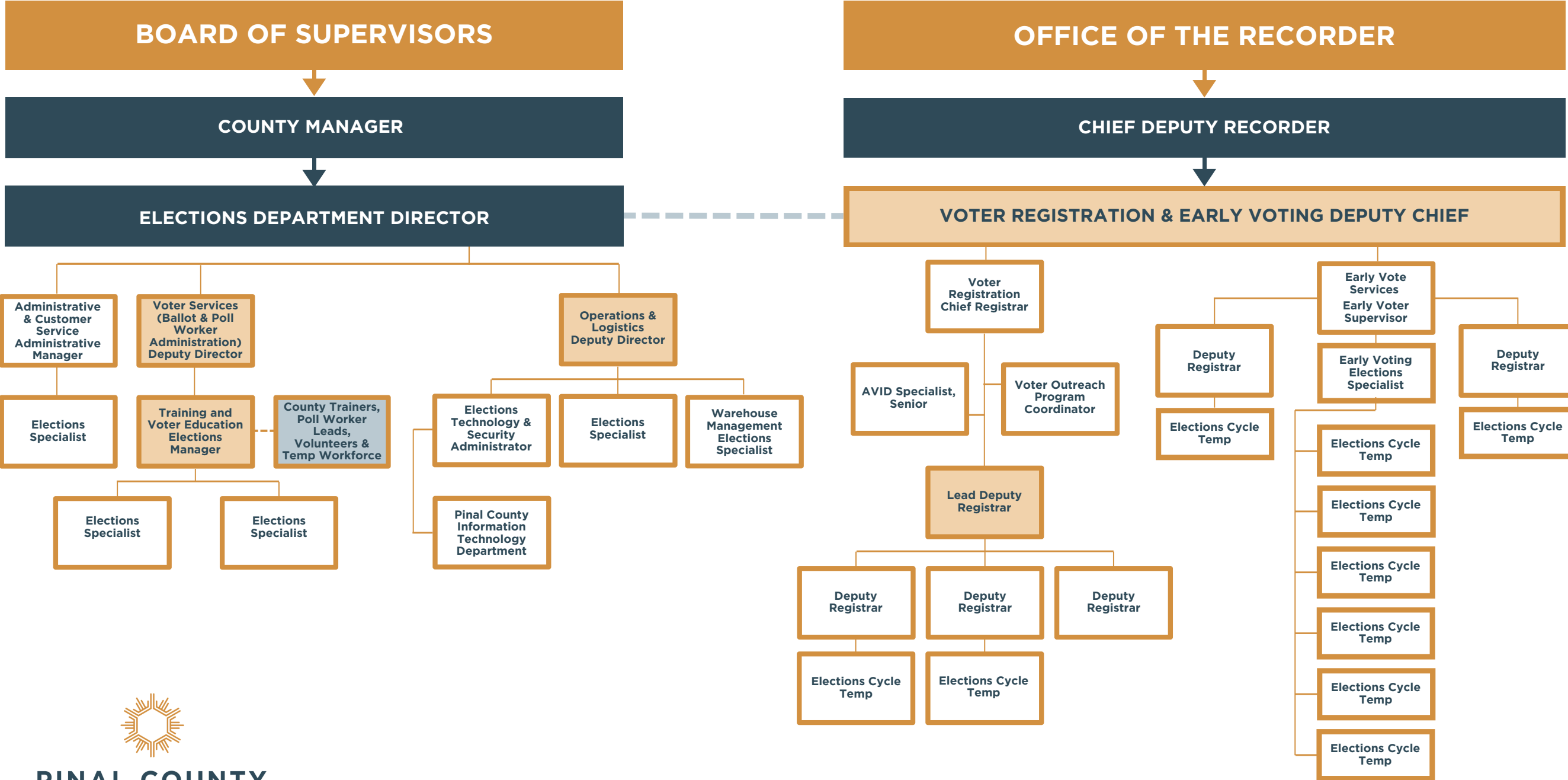
<b>12/31/2022</b>	Dec 31	SOS		Deadline for SOS to inform legislature about plan for election officer certification and training	16-407(D)	<b>SATURDAY</b>
<b>1/1/2023</b>	Jan 1	SOS		Begin Filing 2022 4th Qtr Lobbyist Expenditure Report covering October 1, 2022 - December 31, 2022	41-1232.02(B) 41-1232.03(B)	<b>HOLIDAY</b>
<b>1/1/2023</b>	Jan 1	SOS		Begin filing Standing Committee 2022 4th Qtr Campaign Finance Report covering October 23, 2022 - December 31, 2022	16-927(A)(2)(b) 16-928(B)	<b>HOLIDAY</b>
<b>1/1/2023</b>	Jan 1	SOS	ELEC	Begin filing PAC and Political Party 2022 4th Qtr Campaign Finance Report covering October 23, 2022 - December 31, 2022	16-927(A)(2)(b)	<b>HOLIDAY</b>
<b>1/1/2023</b>	Jan 1	SOS		Begin Filing Candidate 2022 4th Qtr Campaign Finance Report Covering October 23, 2022 - December 31, 2022 (Statewide and Legislative candidates)	16-927(A)(2)(b) 16-927(B)	<b>HOLIDAY</b>
<b>1/1/2023</b>	Jan 1	ELEC		Begin Filing Candidate 2022 4th Qtr Campaign Finance Report Covering October 23, 2022 - December 31, 2022 (applicable county and local races)	16-927(A)(2)(b) 16-927(B)	<b>HOLIDAY</b>
<b>1/1/2023</b>	Jan 1	SOS		Begin filing Public Officers Annual Financial Disclosure Statement covering CY2022	18-444(D)	<b>HOLIDAY</b>
<b>1/1/2023</b>	Jan 1	SOS		Begin Filing Principal and Public Body 2022 Annual Expenditure Reports covering January 1, 2022 - December 31, 2022	41-1232.02(A) 41-1232.03(A)	<b>HOLIDAY</b>
<b>1/9/2023</b>	Jan 9	SOS		Deadline for filing Biennial Principal or Public Body Registration Renewal for period beginning 2023 - 2024	41-1232(C) 41-1232.01(C)	
<b>1/17/2023</b>	Jan 15 (Jan 16 is a holiday so move to next business day)	SOS		Deadline for filing Standing Committee 2022 4th Qtr Campaign Finance Report covering October 23, 2022 - December 31, 2022	16-927(A)(2)(b) 16-928(B) 1-243(A) 1-303	<b>HOLIDAY</b>
<b>1/17/2023</b>	Jan 15 (Jan 16 is a holiday so move to next business day)	SOS	ELEC	Deadline for filing PAC and Political Party 2022 4th Qtr Campaign Finance Report covering October 23, 2022 - December 31, 2022	16-927(A)(2)(b) 1-243(A) 1-303	<b>HOLIDAY</b>
<b>1/17/2023</b>	Jan 15 (Jan 16 is a holiday so move to next business day)	SOS		Deadline for Filing Candidate 2022 4th Qtr Campaign Finance Report Covering October 23, 2022 - December 31, 2022 (Statewide and Legislative candidates)	16-927(A)(2)(b) 16-927(B) 1-243(A) 1-303	<b>HOLIDAY</b>
<b>1/17/2023</b>	Jan 15 (Jan 16 is a holiday so move to next business day)	ELEC		Deadline for Filing Candidate 2022 4th Qtr Campaign Finance Report Covering October 23, 2022 - December 31, 2022 (applicable county and local races)	16-927(A)(2)(b) 16-927(B) 1-243(A) 1-303	<b>HOLIDAY</b>
<b>1/31/2023</b>	Jan 31	SOS		Election System Software Escrow Statement: Election vendors who have voting equipment certified for use in Arizona elections and whose equipment is currently in use or will be used in an upcoming election shall notify the Secretary of State, in writing, by January 31 of each year where the source code is held in escrow		







# PINAL COUNTY RECORDERS & ELECTIONS ORGANIZATION CHART DRAFT





AGENDA ITEM

August 17, 2022 ADMINISTRATION BUILDING A  
FLORENCE, ARIZONA

---

**REQUESTED BY:**

**Funds #:**

**Dept. #:**

**Dept. Name:**

**Director:**

---

**BRIEF DESCRIPTION OF AGENDA ITEM AND REQUESTED BOARD ACTION:**

Discussion/approval/disapproval of the creation of new job classifications for the Elections Department and Recorder's Office. (MaryEllen Sheppard)

---

**BRIEF DESCRIPTION OF THE FISCAL CONSIDERATIONS AND/OR EXPECTED FISCAL IMPACT OF THIS AGENDA ITEM:**

---

**BRIEF DESCRIPTION OF THE EXPECTED PERFORMANCE IMPACT OF THIS AGENDA ITEM:**

---

**MOTION:**

Approve as presented, Elections Department new job classifications for Deputy Director, Elections and Elections Manager.

---

History	Who	Approval
Time		

---

**ATTACHMENTS:**

Click to download
<input type="checkbox"/> <a href="#">Attachment(s)</a>
<input type="checkbox"/> <a href="#">Manager Elections Draft Final</a>
<input type="checkbox"/> <a href="#">Deputy Director Elections Draft Final</a>

---

## **DOCUMENT(S) TO BE PRESENTED AT THE BOARD MEETING**

---

\*Upon receipt if you would like a copy of the presentation please email or call

[ClerkoftheBoard@Pinal.gov](mailto:ClerkoftheBoard@Pinal.gov)

(520) 866-6068

## Classification Description

*Work in this classification requires an individual to be able to perform the essential job functions satisfactorily. Reasonable accommodations may be made to enable individuals with disabilities to perform the primary classification functions herein described. Since every duty associated with this classification may not be described herein, employees may be required to perform duties not specifically spelled out in this classification description, but which may be reasonably considered to be incidental in the performing of their duties just as though they were actually written out in this description.*

**Classification:** ELECTIONS MANAGER

**Department:** Elections

**Pay Grade:** Grade 11 (\$53,619 - \$83,109)

**FLSA Status:** Exempt

**JOB SUMMARY:** Under general supervision performs work of moderate difficulty in assisting the Elections Deputy Director and Director in managing the overall planning, organizing, staffing, logistics and operational activities of the Elections Department. Responsible for recruiting, selecting and managing the temporary and volunteer poll workers and elections' boards. Manages the delivery of accurate information and training to elections workers, the public, candidates and political parties; performs related work as required.

**This position is not covered under the Pinal County Merit System. Incumbents in this position serve at the pleasure of their respective Appointing Authority. The employment relationship of incumbents in this position is "at will"; the employee may be terminated at any time, for any reason, with or without cause.**

### **TYPICAL CLASSIFICATION ESSENTIAL DUTIES:**

- Manage staff through appropriate delegation and work supervision, organization and assignment of task duties, responsibilities, resources and scope of authority. This includes overseeing staff responsible for inspection and establishment of polling places, poll worker recruitment, training, and payroll, ballot proofing, the Elections Department website, and social media accounts, filing of Board of Supervisors agenda items, voter education activities, and other Elections Department projects and activities.
- Develop, propose, and implement policies, regulations and procedures to ensure compliance with federal, state and local elections statutes and regulations.
- Work as a liaison with federal and state governments, other county elections and recorders' office staff members, Pinal County departments, Native American

Tribal governments, cities, towns, school districts, special taxing districts, political parties, and other stakeholders to ensure elections law compliance and efficient elections.

- Monitor federal and state websites, bulletins, manuals and media releases to ensure the Elections Department's awareness of current information and trends.
- Assist with proposing statutory changes to improve elections, with reviewing election-related bills in the Arizona State Legislature, and with reviewing changes to the Secretary of State's Elections Procedures Manual.
- Assist with management of IGA's with cities, towns and other jurisdictions for whom Pinal County provides election services.
- Assist with ballot creation duties including proofreading all ballot styles, sending ballot proofs to candidates and jurisdictions, working with translators for accurate translations, and creating and reviewing ballot orders.
- Assist with ballot tabulation duties including working with the Early Boards to receive, count, and prepare early ballots for tabulation, oversee the Receiving Boards to receive and tabulate the early and polling place ballots, oversee the Hand Count Boards as part of the election auditing process, and complete necessary reports related to the canvass and post-election audits.
- Represent the Elections Deputy Director, Elections Director and/or the Elections Department at formal and informal meetings.
- To promote and adhere to the workplace values of accountability, commitment, and teamwork to help enrich lives beyond expectation.
- Maintain absolute confidentiality of work-related issues, customer records, and restricted County information.
- Perform other job duties as assigned.

### **POSITION SPECIFIC DUTIES:**

#### **Poll Worker Training and Voter Education:**

- Assess the need for temporary elections workers and implement strategies for timely and effective recruitment.
- Recruit, interview, hire and manage Elections permanent, volunteer and paid temporary staffing in consultation with the Deputy Director.
- Supervise, train and evaluate staff members.
- Manage the schedule, workflow, and performance accuracy of assigned staff to include temporary workers.
- Prepare and submit budget requirements for area(s) of assignment.
- Plan, develop and conduct information and educational activities that inform and educate the public about elections.
- Collaborate with County departments, schools, community organizations and political parties on the recruitment of poll workers.
- Plan, develop and coordinate systems to disseminate information to the general public about elections.
- Oversee design of web pages relating to elections.
- Plan, organize and conduct training programs for polling place election workers
- Create training manuals and curriculum.
- Evaluate training programs assuring accuracy and effectiveness.

- Develop and disseminate public information materials.
- Respond to public inquiries regarding election and voter activities.

**Supervises:**

- Elections Specialist(s)
- Temporary Staffing (Poll Workers and Elections Boards Staffing)

**MINIMUM REQUIREMENTS TO PERFORM WORK:**

- A Bachelor's Degree in Business or Public Administration, Management, Education, or a related field.
- Two years increasingly responsible elections related experience.
- One year in a supervisory/management and training role.
- Or an equivalent combination of relevant education and/or experience.
- Valid Driver's License with Arizona Driver's License within 30 days of hire.

**Special Requirements:**

- Arizona Secretary of State Election Certification and re-certification every two (2) years;
- Employees who do not hold this certification must attend the AZ Secretary of State Election Certification training and pass the certification examination at the first scheduled training session available. (For purposes of the current recruitment this shall be satisfied no later than December 31, 2023)

**Knowledge, Skills and Abilities:**

- Federal, State and Local laws, rules and regulations pertaining to elections.
- Planning, organizing and managing comprehensive and complex operations relating to elections.
- Planning and executing on time critical and logistically complicated serial and parallel events.
- Communicating complex and technical local, state and federal laws and requirements relating to areas of assignment.
- Proficient in exercising effective control over voting methods and devices assuring the security and integrity of their application and use.
- Techniques and practices for effectively dealing with members of the public.
- Principles and practices of effective leadership, supervision and management.
- Voting systems and their various applications.
- Administration, budgeting, procurement, and program management.
- Records management and retention requirements.
- Data collection, analysis and reporting.
- Read, analyze, and interpret journals, financial reports, and legal documents.
- Respond to inquiries or complaints from customers, regulatory agencies, or members of the business community.
- Establish and maintain effective working relationships with employees, other related County departments, government agencies, and community members.
- Follow written and verbal instructions.
- Communicate effectively verbally and in writing.
- Cultivating a positive work environment.



- Providing quality customer service and maintaining productive working relationships.
- Prioritizing and setting manageable goals.
- Being efficient with time at work.
- Communicating effectively with management, staff, customers, and visitors.
- Being flexible and taking criticism constructively.
- Following internal procedures and external regulations.
- Bringing compliance issues to the attention of management.
- Working collaboratively in all facets of position to meet position requirements and support County goals.
- Conform to all safety rules and use all appropriate safety equipment.

**PHYSICAL DEMANDS:**

The work requires exerting up to 40 pounds of force occasionally, and/or up to 40 pounds of force to move objects, and ability to occasionally lift and carry items up to 25 pounds. The work also requires the ability to crouch, finger, grasp, handle, reach, perform repetitive motion, kneel, lift, pull, push, hear, speak, frequent movement between areas, operate motor vehicles, and demonstrate mental and visual acuity.

**WORK ENVIRONMENT:**

Work is performed in varied work environments throughout the workday. Work is done in an office setting and warehouse. Site visits, pick-up, and delivery to various locations throughout Pinal County is performed. Work is generally performed in a climate controlled, safe and secure work environment. Contact with agitated residents and high stress situations may occur.

*Pinal County has the right to revise this description at any time, and does not represent in any way a contract of employment. This classification specification is intended to indicate the basic nature of positions allocated to the classification and example of typical duties that may be assigned. It does not imply that all positions within the classification perform all of the duties listed, nor does it list all possible duties that may be assigned.*

\_\_\_\_\_  
Employee Signature

\_\_\_\_\_  
Date

\_\_\_\_\_  
Supervisor (or HR) Signature

\_\_\_\_\_  
Date

## Classification Description

---

*Work in this classification requires an individual to be able to perform the essential job functions satisfactorily. Reasonable accommodations may be made to enable individuals with disabilities to perform the primary classification functions herein described. Since every duty associated with this classification may not be described herein, employees may be required to perform duties not specifically spelled out in this classification description, but which may be reasonably considered to be incidental in the performing of their duties just as though they were actually written out in this description.*

---

**Classification:** DEPUTY DIRECTOR, ELECTIONS

---

**Department:** Elections

**Pay Grade:** Grade 17 (\$81,979 - \$131,166)

**FLSA Status:** Exempt

**JOB SUMMARY:** Assist the Director of Elections with the overall planning, organizing, staffing, logistics, and operational activities of the Elections Department. Perform work in collaboration with the Recorder's Office and other key stakeholders to ensure compliance with all federal and state laws, rules, regulations, and intergovernmental agreements relating to elections. Supervise the activities of staff, volunteers and temporary workers. Oversee and respond to public inquiries regarding elections processes and compliance.

**This position is not covered under the Pinal County Merit System. Incumbents in this position serve at the pleasure of their respective Appointing Authority. The employment relationship of incumbents in this position is "at will"; the employee may be terminated at any time, for any reason, with or without cause.**

### **TYPICAL CLASSIFICATION ESSENTIAL DUTIES:**

- Under the direction of the Board of Supervisors, County Manager and Elections Director, assists the Elections Director in overseeing Election Day and emergency voting operations and logistics, staffing and resources. Works in collaboration with all stakeholders to maintain a secure, transparent, accessible, free and fair election that inspires public confidence in the election process.
- Receives and processes early ballots transferred from the Recorder.
- Oversees post-election ballot processing.
- Provides contract election services and assistance to cities, towns, school districts, fire districts, special districts and the Community College District.
- Processes hand counts and recounts.

Deputy Director, Elections

- Researches administrative, programmatic and technical processes or problems; develops and implements procedural and technical improvements.
- Reviews existing, proposed or recent changes to election laws, rules and regulations and implements needed changes to Election Department processes and procedures to ensure compliance.
- Prepares all reports outlined in the Secretary of State Elections Procedures Manual or as required in the Arizona Revised Statutes.
- Other duties as assigned.

**POSITION SPECIFIC DUTIES:**

**Deputy Director: Operations, Logistics and Warehouse Services**

- Assists the Elections Director with the overall planning and management of the operations of the Pinal County Elections Department.
- Directs the management of operational, technical and warehouse functions.
- Works with the County Attorney's office to monitor legislation as passed by the Governor and implement election operation changes as required by Arizona Revised Statutes (A.R.S.)
- Directs the development and implementation of policies and procedures.
- Designs, prepares, presents and executes an Election Day Plan for all applicable elections that fall within the authority of the Board of Supervisors.
- Prepares and implements setup of accessible equipment for in-person Early Voting locations
- Prepares and implements setup of in-person voting locations for Election Day.
- Maintains election equipment, data, calendar and records.
- Oversees post-election voting tabulation.
- Completes Logic and Accuracy Testing.
- Leads and directs operational and organizational studies/projects.
- Evaluates, implements, and monitors security devices and protocols to ensure election transparency and integrity.
- Analyzes department results and provides recommendations to improve results and service delivery; identifies operational deficiencies, develops and implements solutions.
- Assists the Deputy Director, Voter Services, and may perform the duties associated with that role.

**Supervises:**

- Elections Technology and Security Administrator (County IT employee assigned to Elections)
- Elections Specialist(s)

**Deputy Director: Voter Services (Ballot Administration/Poll and Election Board Workers)**

- Reviews, analyzes, interprets and presents election related data and information to inform the Pinal County Election Day Plan.

- Interfaces with all jurisdictions participating in each election.
- Responsible for customer/voter relationship management.
- Plans, evaluates, prepares and distributes election documents, including ballots and electronic information, as required each election cycle to meet the needs of participating voters and candidates.
- Oversees the recruitment, training and management of all volunteer and temporary staffing resources and serves as a resource for all Election Day workers.
- Oversees the recruitment, training and management of Poll Workers and Election Boards.
- Identifies opportunities for media, community event engagement, and social media engagement related to voter education.
- Builds relationships with volunteer and temporary recruitment sources and community stakeholders.
- Assists in developing and disseminating training materials.
- Assists the Deputy Director, Operations, Logistics and Warehouse Services, and may perform the duties associated with that role.

**Supervises:**

- Elections Manager
- Elections Specialist(s)
- Volunteers and Temporary Workers

**MINIMUM REQUIREMENTS TO PERFORM WORK:**

- A Bachelor's Degree in Business or Public Administration, Management or a related field.
- Four years increasingly responsible elections experience with at least two years in a supervisory, management, organizational management and/or legal role.
- Or an equivalent combination of relevant education and/or experience.
- Valid Driver's License with Arizona Driver's License within 30 days of hire.

**Special Requirements:**

- Arizona Secretary of State Election Certification and re-certification every two (2) years;
- Employees who do not hold this certification must attend the AZ Secretary of State Election Certification training and pass the certification examination at the first scheduled training session available. (For purposes of the current recruitment this shall be satisfied no later than December 31, 2023)

**Knowledge, Skills and Abilities:**

- Federal, State and Local laws, rules and regulations pertaining to elections.
- Planning, organizing and managing comprehensive and complex operations relating to elections.

- Planning and executing on time critical and logistically complicated serial and parallel events.
- Communicating complex and technical local, state and federal laws and requirements relating to areas of assignment.
- Proficient in exercising effective control over voting methods and devices assuring the security and integrity of their application and use.
- Techniques and practices for effectively dealing with members of the public.
- Principles and practices of effective leadership, supervision and management.
- Voting systems and their various applications.
- Administration, budgeting, procurement, and program management.
- Records management and retention requirements.
- Data collection, analysis and reporting.
- Read, analyze, and interpret journals, financial reports, and legal documents.
- Respond to inquiries or complaints from customers, regulatory agencies, or members of the business community.
- Establish and maintain effective working relationships with employees, other related County departments, government agencies, and community members.
- Follow written and verbal instructions.
- Communicate effectively verbally and in writing.
- Cultivating a positive work environment.
- Providing quality customer service and maintaining productive working relationships.
- Prioritizing and setting manageable goals.
- Being efficient with time at work.
- Communicating effectively with management, staff, customers, and visitors.
- Being flexible and taking criticism constructively.
- Following internal procedures and external regulations.
- Bringing compliance issues to the attention of management.
- Working collaboratively in all facets of position to meet position requirements and support County goals.
- Conform to all safety rules and use all appropriate safety equipment.

### **PHYSICAL DEMANDS:**

The work requires exerting up to 30-40 pounds of force occasionally, and/or up to 40 pounds of force to move objects, and ability to occasionally lift and carry items up to 25 pounds. The work also requires the ability to crouch, finger, grasp, handle, reach, perform repetitive motion, kneel, lift, pull, push, hear, speak, frequent movement between areas, operate motor vehicles, and demonstrate mental and visual acuity.

### **WORK ENVIRONMENT:**

Work is performed in varied work environments throughout the workday. Work is done in an office setting and warehouse. Site visits, pick-up, and delivery to various locations throughout Pinal County is performed. Work is generally performed in a climate controlled, safe and secure work environment. Contact with agitated residents and high stress situations may occur.

*Pinal County has the right to revise this description at any time, and does not represent in any way a contract of employment. This classification specification is intended to indicate the basic nature of positions allocated to the classification and example of typical duties that may be assigned. It does not imply that all positions within the classification perform all of the duties listed, nor does it list all possible duties that may be assigned.*

\_\_\_\_\_  
Employee Signature

\_\_\_\_\_  
Date

\_\_\_\_\_  
Supervisor (or HR) Signature

\_\_\_\_\_  
Date



AGENDA ITEM

August 17, 2022 ADMINISTRATION BUILDING A  
FLORENCE, ARIZONA

---

**REQUESTED BY:**

**Funds #:**

**Dept. #:**

**Dept. Name:** Clerk of the Board

**Director:** Natasha Kennedy

---

**BRIEF DESCRIPTION OF AGENDA ITEM AND REQUESTED BOARD ACTION:**

Meeting Notice of Posting

---

**BRIEF DESCRIPTION OF THE FISCAL CONSIDERATIONS AND/OR EXPECTED FISCAL IMPACT OF THIS AGENDA ITEM:**

---

**BRIEF DESCRIPTION OF THE EXPECTED PERFORMANCE IMPACT OF THIS AGENDA ITEM:**

---

**MOTION:**

---

History	Who	Approval
Time		

---

**ATTACHMENTS:**

Click to download

☐ [Notice of Posting](#)





**PINAL COUNTY**  
WIDE OPEN OPPORTUNITY

**MEETING NOTICE OF POSTING**

**STATE OF ARIZONA**

**COUNTY OF PINAL**

I, Natasha Kennedy, being duly sworn upon her oath, says as follows:

I am the appointed Clerk of the Pinal County Board of Supervisors.

In my position as Clerk of the Board of Supervisors and Board of Directors, I am responsible for posting all Agendas.

Pursuant to A.R.S. 38-431.02 notice is hereby given that the Pinal County Board of Supervisors will hold a Special Session meeting on **Wednesday, August 17, 2022 at 9:30 a.m.** in the Board Hearing Room, 1891 Historic Courthouse, Administrative Complex, located at 135 N. Pinal Street, Florence, Arizona 85132.

Board Meetings are broadcasted live and the public may access the meeting at <https://www.pinalcountyaz.gov/bos/Pages/LiveStreaming.aspx>

Board Agendas are available at <https://pinal.novusagenda.com/AgendaPublic/>

At any time during business hours, citizens may reach the Clerk of the Board Office at (520) 866-6068 or via email at [ClerkoftheBoard@pinal.gov](mailto:ClerkoftheBoard@pinal.gov) for information about Board meeting participation.


**Note:** One or more members of the Board may participate in this meeting by telephonic conference call.

I hereby further certify that I caused to be posted this Monday, August 15, 2022, around 4:00 PM the Special Session Agenda, and Executive Session as follows:

1. A kiosk located outside the front entrance to The Old Historical Courthouse, Administrative Complex Building, 135 North Pinal Street, Florence, Arizona 85132
2. County website under Meetings located at [www.pinal.gov](http://www.pinal.gov)
3. Emailed the NOVUS Agenda Distribution List and Clerk of the Board Notification Distribution List

**WITNESS** my official signature and corporate seal of Pinal County, Arizona this 15<sup>th</sup> day of August, 2022.



  
**Natasha Kennedy**  
Clerk of the Board  
Board of Supervisors of Pinal County, Arizona

**CLERK OF THE BOARD OF SUPERVISORS**

1891 Historic Courthouse | 135 North Pinal Street | P.O. Box 827 | Florence, AZ 85132 | T: 520-866-6068  
[www.pinal.gov](http://www.pinal.gov)