
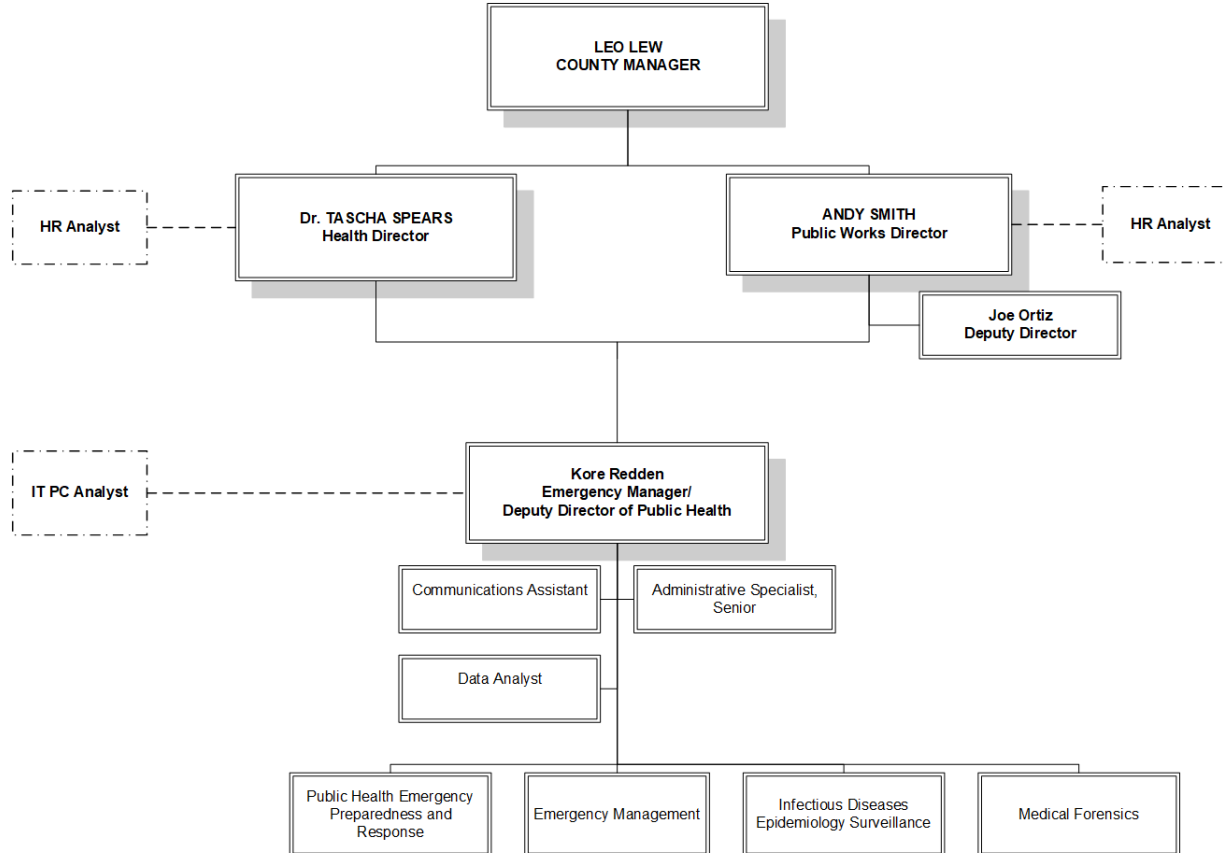


Public Works and Public Health

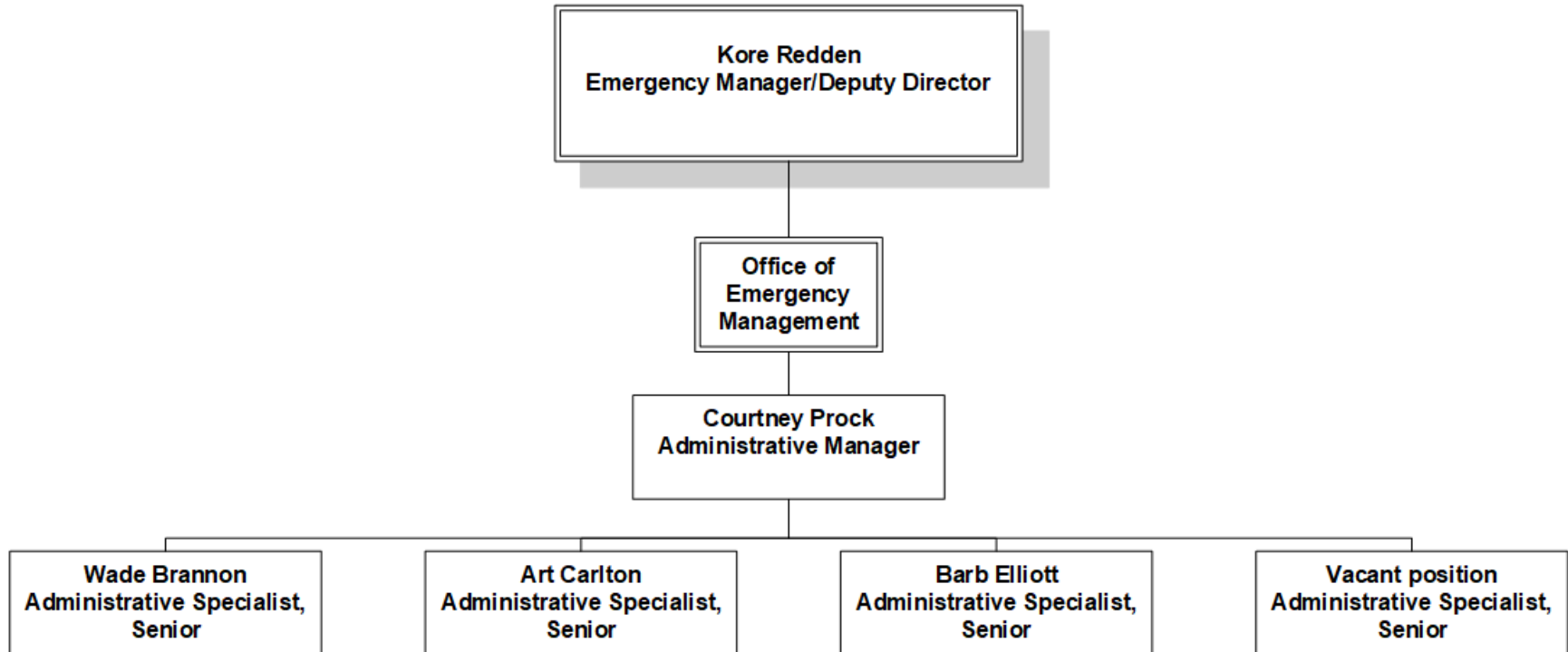
A Collaborative Partnership within a Unified Command Structure



Collaboration, Vision, Structure



Organizational Structure of the Office of Emergency Management



Expectations and Guiding Principles

County Leadership Vision

1. Statutory Compliance
2. Quality of Operational Improvement
3. Efficiency
4. Employee/Cultural Development of the Team
5. Personal/Professional Development

County's Core Values

Accountability	◆	Commitment	◆	Teamwork
THROUGH				
Flexibility	◆	Integrity	◆	Innovation

Applying the Public Works / Public Health Partnership to an Emergency Activation

- **Common Theme = Public Works and Public Health are always activated and both departments report to the Emergency Operations Center**
 - **Power Outage**
 - **Wildfire**
 - **Inclement Weather**
 - **Flooding**
 - **Mass Casualty Incident**
 - **Shelter Operations**

Next Steps

- **Transition is underway**
 - **Ongoing assessment of essential duties to increase efficiency**
 - **Structure of the Team**
 - **Foster County Core Values with the Team**
 - **Provide internal and external customer service**

Next Steps:

- **Position/title restructure to better align with the Team's minimum qualifications, duties, roles, and responsibilities**
 - Improves efficiency
 - Better recruitment and retention