

SunDog Energy Center: Major Comprehensive Plan Amendment

Pinal County Board of
Supervisors

November 18, 2020

Invenergy



Agenda

1. About Invenergy
2. Project Overview
3. Questions

World's leading
privately held
sustainable energy
company



160+
Projects

25,000
MW
Capacity
Developed

\$33B+
in Completed
Transactions

1,000+
Employees

\$216M+
Annual Local
Economic
Investment

Invenergy

Our Invenergy Impact



\$216 million

Total 2019 local economic investment in wages & benefits, lease payments, and state & local taxes



\$1.2 million

Given to 840 different cause-based organizations in 2019, focusing on veterans, education, emergency services & environmental stewardship



11% veterans

Percent of Invenergy's U.S.-based workforce who are military veterans or reservists

ORACLE®

Sustainability Innovation Award

Awarded by Oracle to Invenergy in 2017 for sustainability leadership



Proud to Support

Four Star Sponsor

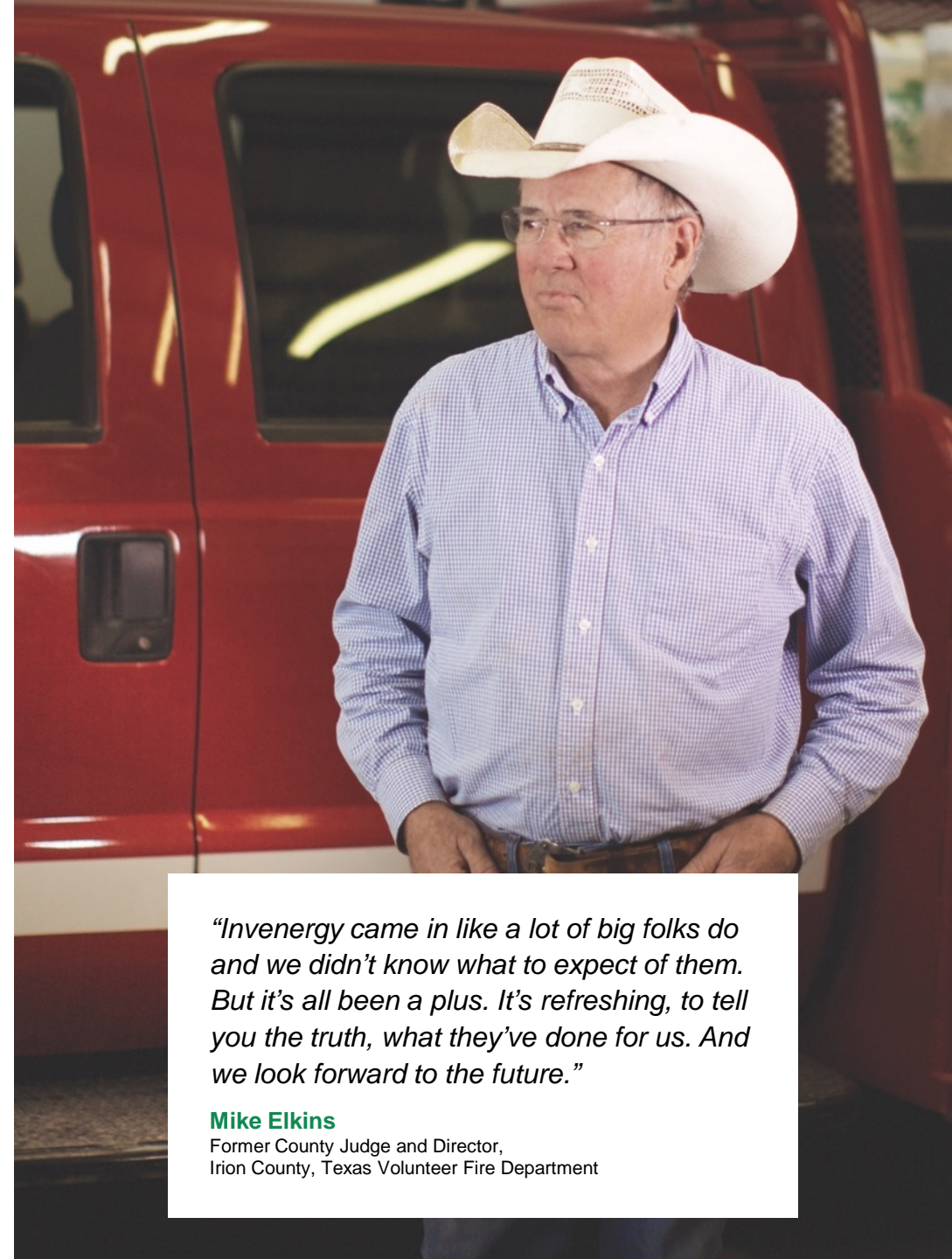
First sustainable power developer & operator to sponsor National FFA (Future Farmers of America)



TAMARINDO
strategic communications advisory

#1 Renewables Reputation

Top brand reputation among 1,500 companies active in the North American renewables market

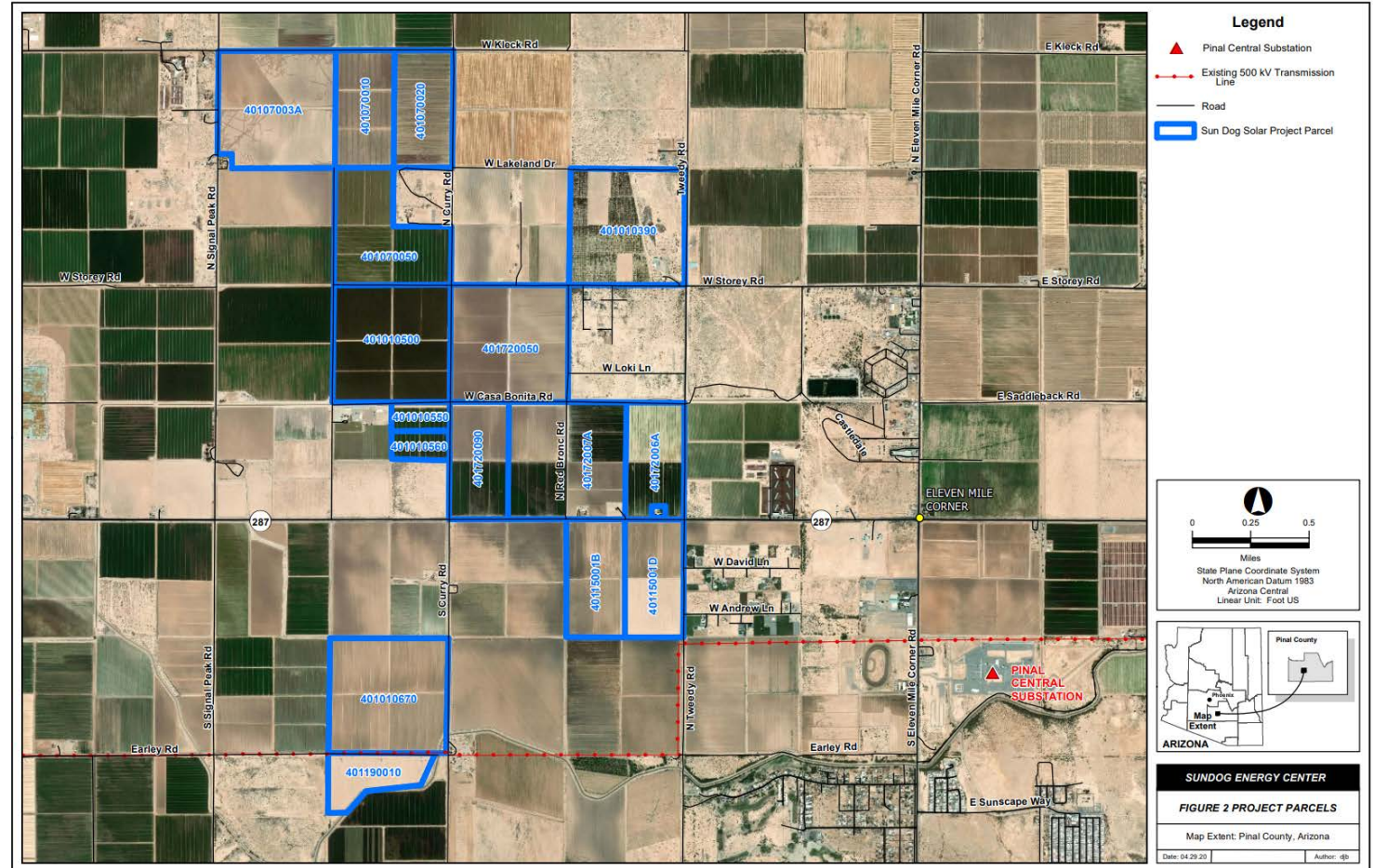


"Invenergy came in like a lot of big folks do and we didn't know what to expect of them. But it's all been a plus. It's refreshing, to tell you the truth, what they've done for us. And we look forward to the future."

Mike Elkins

Former County Judge and Director,
Irion County, Texas Volunteer Fire Department

- nenergy



Solar 101

- ❖ Six-foot tall solar modules mounted on steel posts, approx. 5 feet tall
- ❖ Racking equipment tracks the sun
- ❖ Generates electricity via photoelectric effect
- ❖ Generated electricity is either stored in the batteries for later use or sent via transmission lines to the grid



Project Benefits



200-400
construction jobs



3-5
Full-time jobs



New **property tax**
revenue for Pinal
County



Minimal impact on local
infrastructure, services
and the environment



Increased local **economic**
activity at local businesses

Common Questions

Environmental

- ❖ Invenergy is committed to responsible development and will coordinate with state and federal agencies to receive input on solar development at this site. Initial due diligence has included a Phase 1 ESA, Tier 1 and 2 Site Characterization Study including a desktop wetland delineation, and on-site geotechnical and topographic studies.
- ❖ Invenergy's application materials included an Environmental Online Review Tool Report for the project area from the Arizona Game & Fish Department. Pinal County staff reviewed this information and their staff report to the CAC states "... the report showed **no important wildlife area or habitats on the site or within five miles.**"

Heat Island Effect – research shows heat effects dissipate and cannot be measured 100 ft from the panels.

Property Values –numerous studies have shown no support for proposition that solar projects will have a negative impact on proximate rural residential property values. In fact, for agricultural properties hosting PV panels, additional income from solar lease provides a steady hedge against volatile commodity prices and may in fact increase value and marketability.

Questions?

Randy Schroeder
EnValue

Susan Innis

Senior Manager, Renewable Development
sinnis@invenergy.com
Tel: 303.557.4502