

Pinal County  
Public Truth In Taxation Hearing  
& Final Budget Adoption  
Fiscal Year 2020 – 2021



**PINAL COUNTY**

WIDE OPEN OPPORTUNITY

July 1, 2020

# **Truth in Taxation Hearing Notice of Tax Increase**

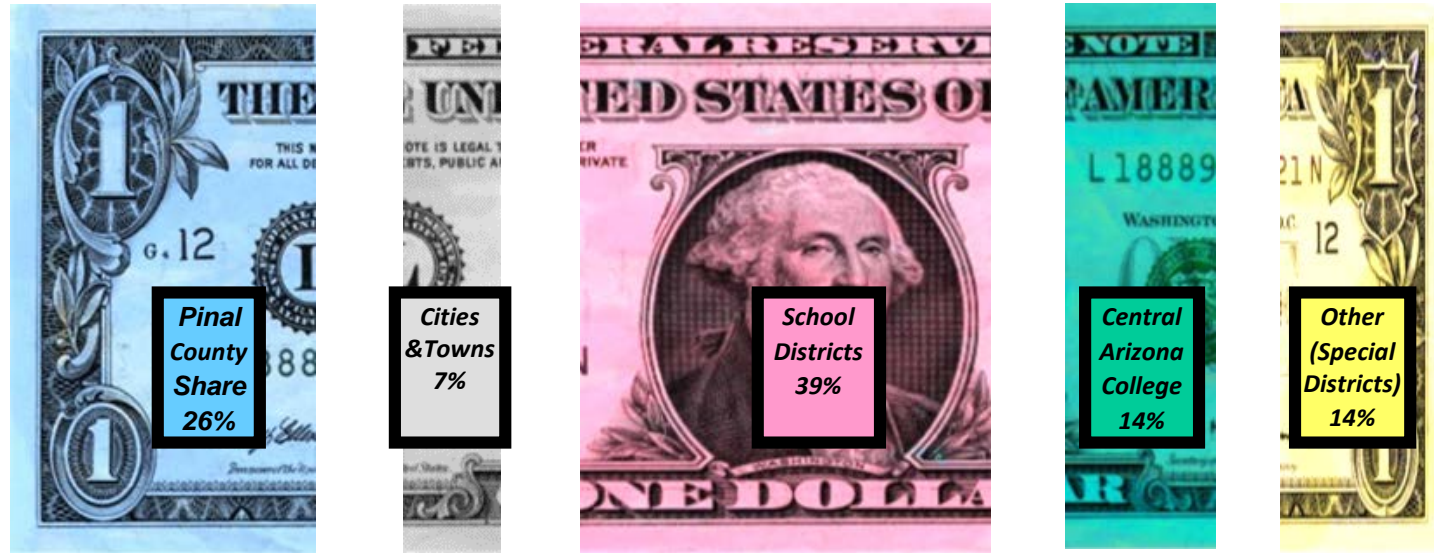
**Wednesday, July 1, 2020 at 9:30 a.m.**

In compliance with Section 42-17107, Arizona Revised Statutes, Pinal County is notifying its property taxpayers of Pinal County's intention to raise its primary property taxes over last year's level. Pinal County is proposing an increase in primary property taxes of \$1,987,279 or 2.08%. For example, the proposed tax increase will cause Pinal County's primary property taxes on a \$100,000 to be \$375.00. Without the proposed tax increase, the total taxes that would be owed on a \$100,000 home would have been \$367.36.

This proposed increase is exclusive of increased primary property taxes received from new construction. The increase is also exclusive of any changes that may occur from property tax levies for voter approved bonded indebtedness or budget and tax overrides.

All interested citizens are invited to attend the public hearing on the tax increase that is scheduled to be held at 9:30 a.m. on July 1, 2020, in the Pinal County Board of Supervisors' Hearing Room located at Pinal County Administrative Complex, 135 North Pinal St, Florence, Arizona.

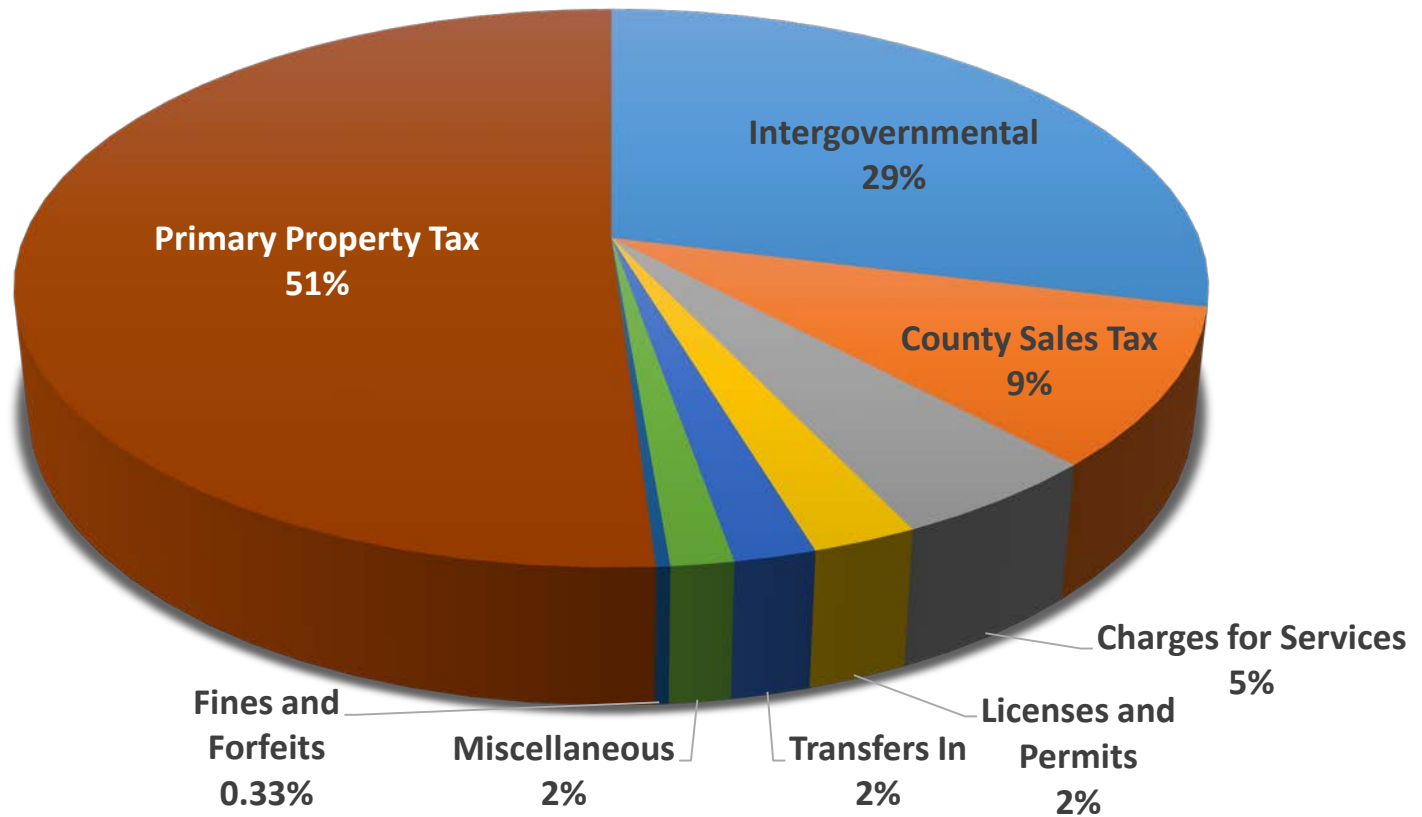
# Where Your Primary Property Tax Dollars Goes



On average, the FY 2019-2020 Pinal County portion of the tax levy is roughly 26 cents of your tax dollar. This is down from 31 cents in FY 2010-2011.

# General Fund Revenue Budget

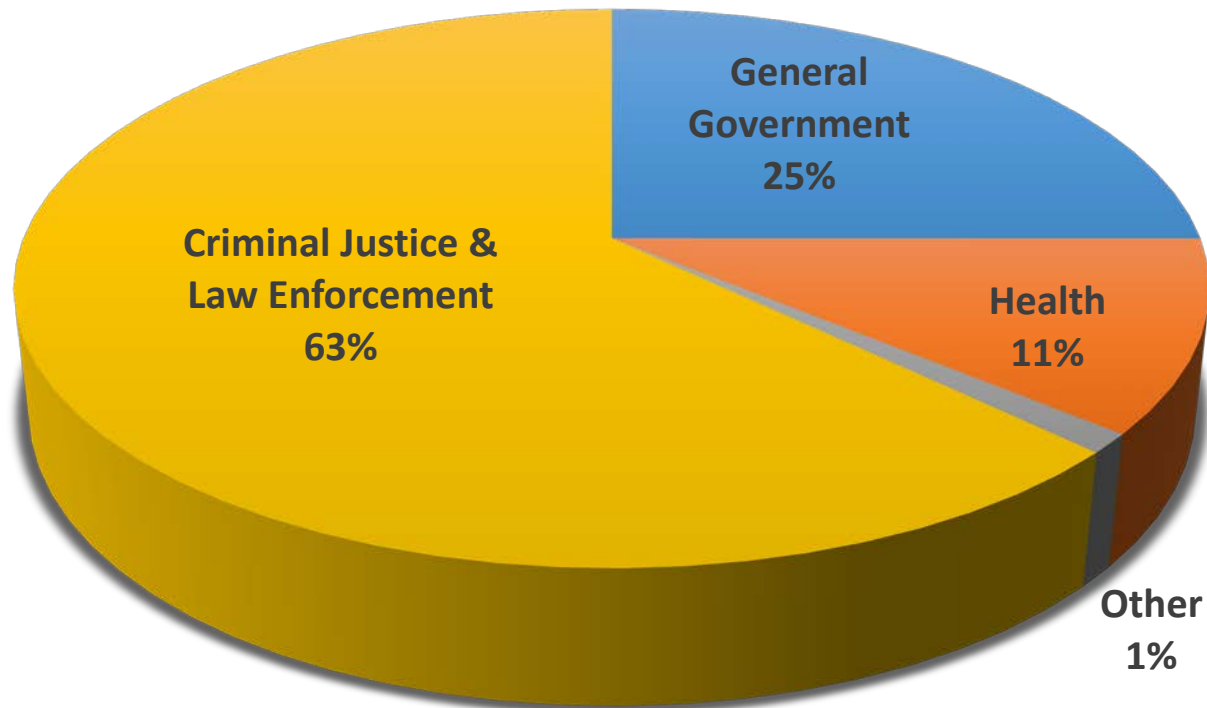
## FY 2020 - 2021



Notes: Property Taxes includes delinquent tax lien sales and Intergovernmental includes State Shared Revenue

# Distribution of General Fund

FY 2020 - 2021



\*Does not include reserves, transfers, salary increases & medical benefits

Notes: Health includes mandatory AHCCCS contributions and Behavioral Health; General Government includes Assessor, Recorder, Treasurer, Board of Supervisors/appointed, and countywide utilities and facilities; and Other includes Transportation, Education, Welfare, and Recreation.

# FY 2020-2021 Highlights

- Pinal County continues its commitment to financial health while reducing the primary property tax rate and increasing service quality. The budget was built with a 4 cent primary property tax rate reduction from \$3.79 to \$3.75.
- New construction valuation was steadily modest at \$88M (3.5% growth). The increase in existing properties valuation was \$140M (3.17%).
- Due to uncertainty of the current pandemic, local excise tax and state shared tax revenue is built into the budget as flat.
- Reallocations and increases in GF funding to enhance ongoing services of \$6.8M and one time of \$3.2M.
- Equivalent budget capacity for 2.5% (\$1.3M) wage increase & wage increases for sworn and detention step plans (\$800k) beginning the 2<sup>nd</sup> quarter.
- No increase to employee charge for Medical benefits.

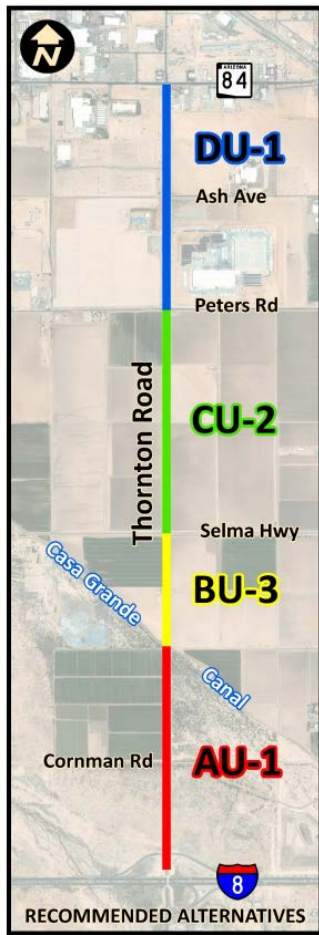


# FY 2020-2021 *Facilities* Projects

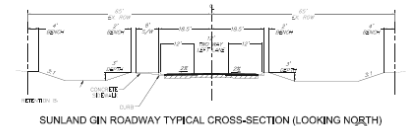
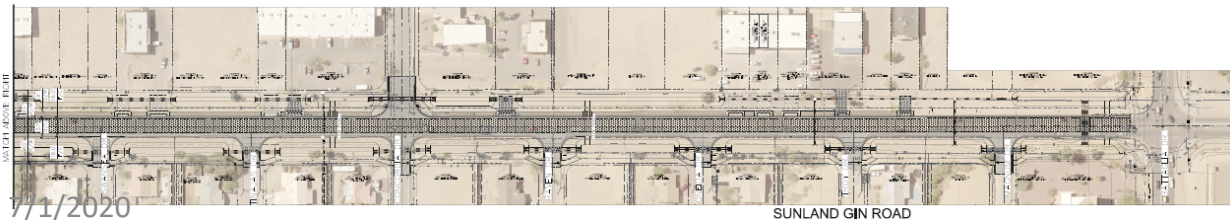
- ***Construction Projects Planned or Underway***
  - ❖ Development Services/EOC Building
  - ❖ County Complex – San Tan Valley
  - ❖ County Complex – City of Maricopa
  - ❖ County Attorney's Building
  - ❖ Countywide Supplemental
  - ❖ Adult Detention Supplemental
  - ❖ Superior Court Public Elevators
  - ❖ Juvenile Detention Roofing
  - ❖ Fleet - Pigeon Netting
  - ❖ Palo Verde Redesign



# FY 2020-2021 *Transportation* Projects



- ❖ BUILD Grant Improvements
  - Hanna and Houser Roads
- ❖ Meridian Road Improvements
  - Combs Road to the new SR24 Connection
- ❖ Mountain View Road/Jacob Waltz Road Connections
- ❖ Sunland Gin Road Improvements
  - Bataglia Road to Monaco Road
- ❖ Thornton Road Design
  - Interstate 8 to SR 84
- ❖ Gary Road Improvements
  - Riggs Road to Empire Blvd
- ❖ Florence Kelvin Highway Improvements
  - Donnelly Wash + 2 miles





# FY 2020-2021 *Flood Control* Projects



- Amarillo Valley Dams Decommissioning (Construction)
- Valley of the Sun Estates – Phase II (Construction)
  - Skyline Road Improvements
- Master Hydrology Model
- San Tan Valley Area Drainage Master Plan
- El Camino Viejo Bridge Replacement (Design)
- Roberts & Thompson Drainage (Design)
- Arizona City Collector Channel (Design)
- SR88 & Idaho Rd Detention Basin (Design)

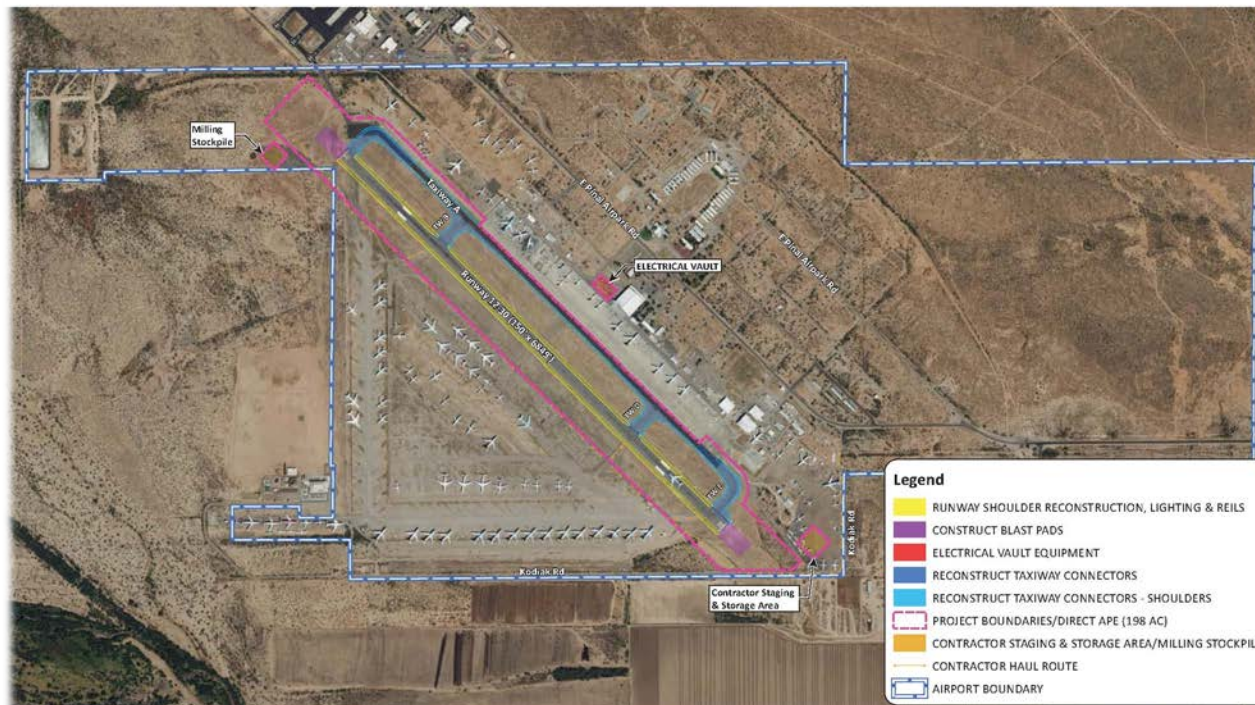
# FY 2020-2021 *Airport* Projects

## ❖ San Manuel Airport

- Obstruction Mitigation Project
- Master Plan

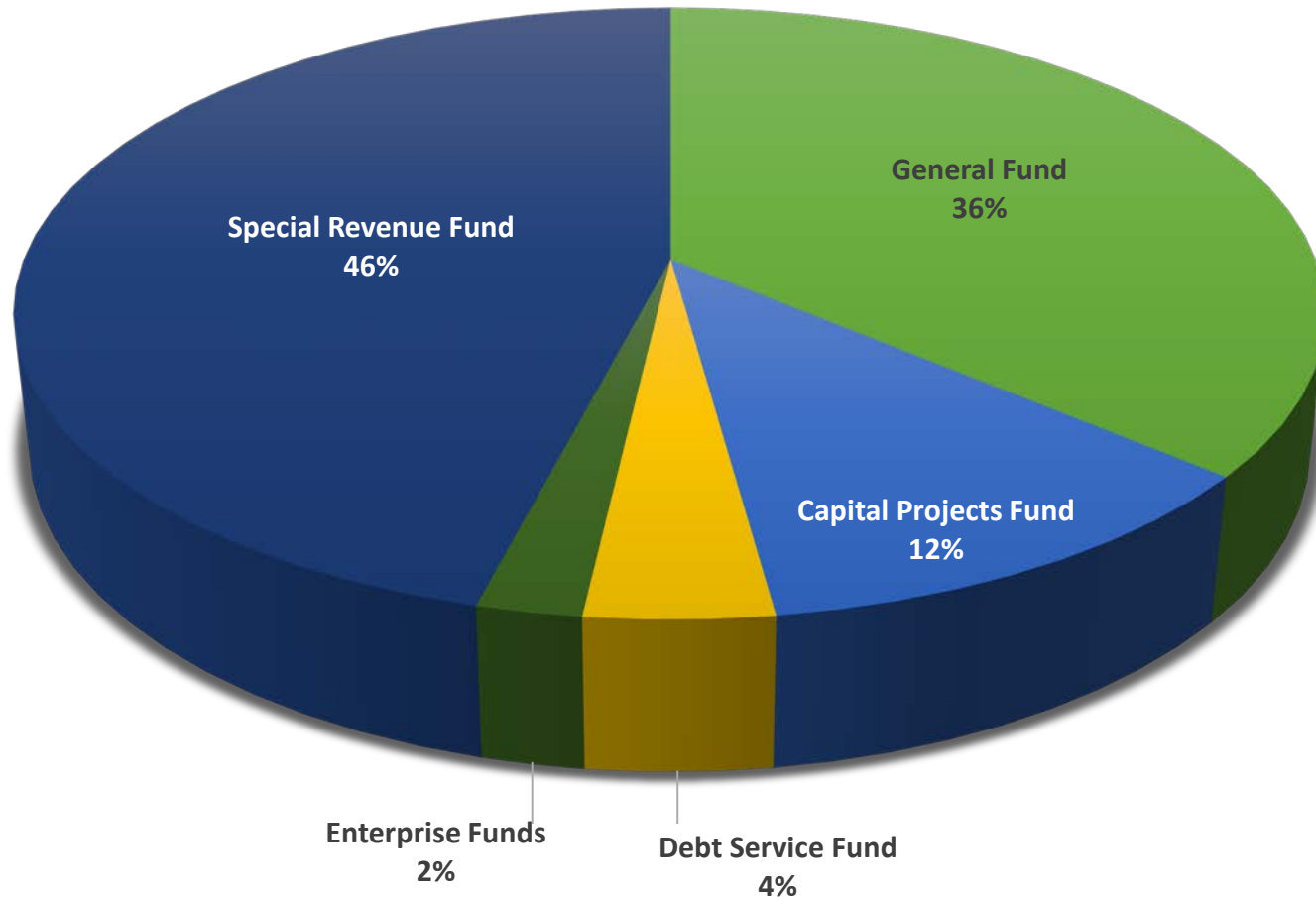
## ❖ Pinal Airpark

- Runway Improvements (Design)
  - Shoulders & lighting, blast pads, electrical vault, taxiway connectors and taxiway lighting



# Total Pinal County Expenditures

\$570,355,462



# Pinal County's Final Budget for Fiscal Year 2020-2021:

**\$570,355,462**

- The overall budget increased by \$58,248,525, which is due to capital projects and potential grant capacity.
- Adoption of the tax rates/levies will be held no later than August 17, 2020.



**PINAL COUNTY**

**WIDE OPEN OPPORTUNITY**