

SEP-003-25
AZ MONSTER 300 – RACE
BOARD OF SUPERVISORS

APRIL 2, 2025



SEP-003-25 : EVENT DETAILS

EVENT ORG: DESTINATION TRAIL

APPLICANT: GARRETT FROELICH

DATES: 4/4/25 -4/11/25 (PINAL COUNTY SPECIFIC 4/4 -4/7)

LOCATION: START = SUPERIOR -> END: PATAGONIA

PARTICIPANT COUNT: 300 TOTAL (50/60 DAILY WAVES)

ADDITIONAL: INAUGURAL EVENT FOR COUNTY

SEP-003-25 : EVENT DETAILS

9 STOPS/STATIONS LOCATED WITHIN UNINC. PINAL COUNTY

- Tent set up for sleeping accommodations
- No open fires, use of propane fire rings as “heaters”
- Lighting for stations are battery & solar powered
- Limited parking
- Stations equipped with portables & lug-a-loos
- Food Stations
- No alcohol
- No structures or amenities requiring building permits
- ROW use permit on file for County crossing areas (5 total)
- Each station to have volunteer medical with HAM radios for communications

SEP-003-25 : SAFETY DETAILS

- Organizers to use course markings & signage; laminated and reflective
- Large notification signs for public awareness at every trailhead entrance and at aid station area
- Sweep conducted of race course after every last runner per station sequence
- Runners to be provided live tracking devices, required to be worn at all times; designating tracking team monitors runners
- HAM radios used for communications across event staff
- Medical Staff comprised of trained/certified volunteer personnel (per applicant); designated Medical Director; identified medics

APPLICANT HAS PROVIDED THE FOLLOWING:

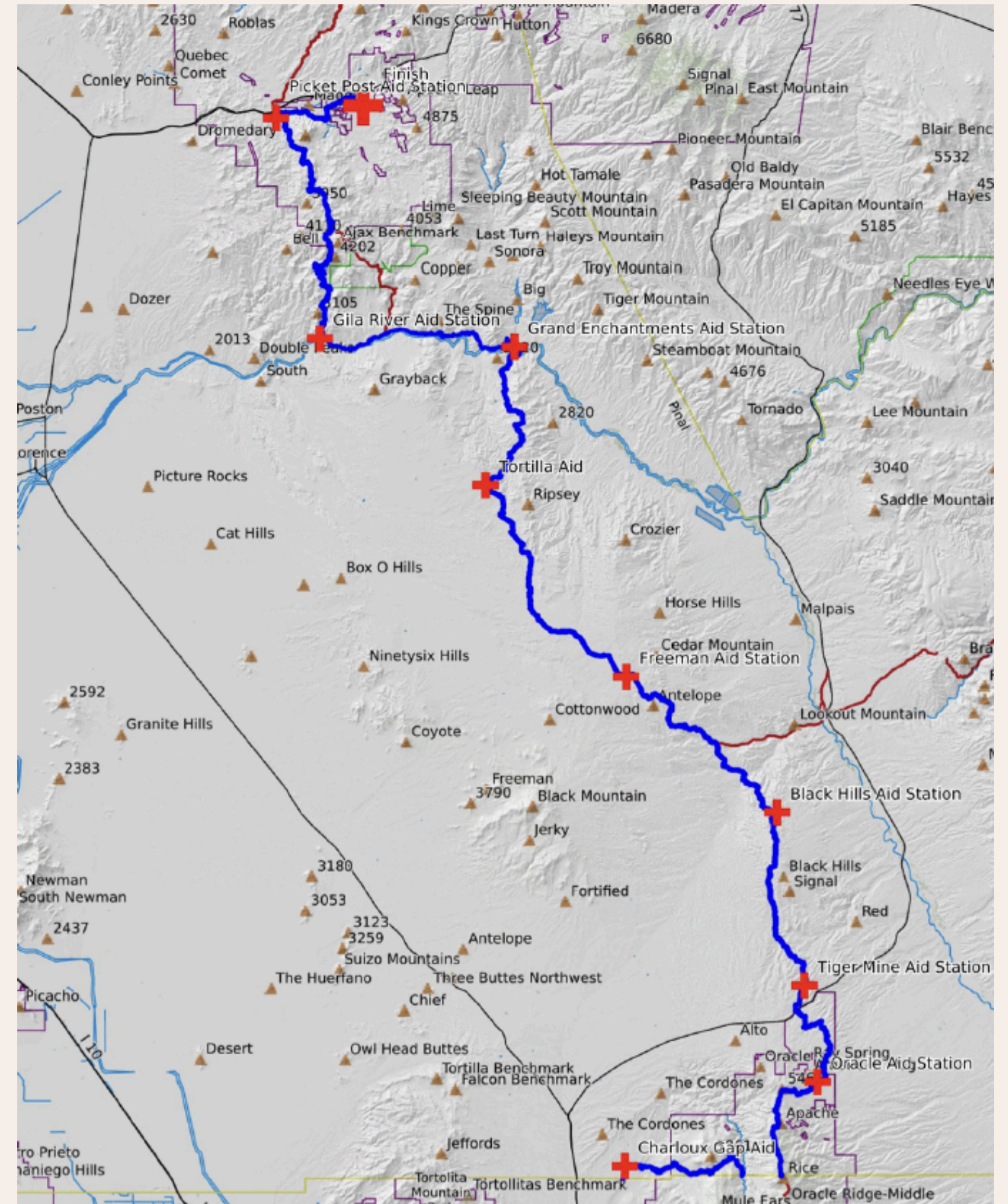
- Medical Plan, Emergency Action Plan, agency outreach documentation

COURSE DETAILS

PC COURSE SECTION

FULL COURSE LINK

ADDITIONAL INFO VIDS



STATIONS VISUAL:

Green = runner path; yellow = EZ Up tents (food area); purple = 10 person tents; blue = volunteer parking; gray = crew parking; brown = potties

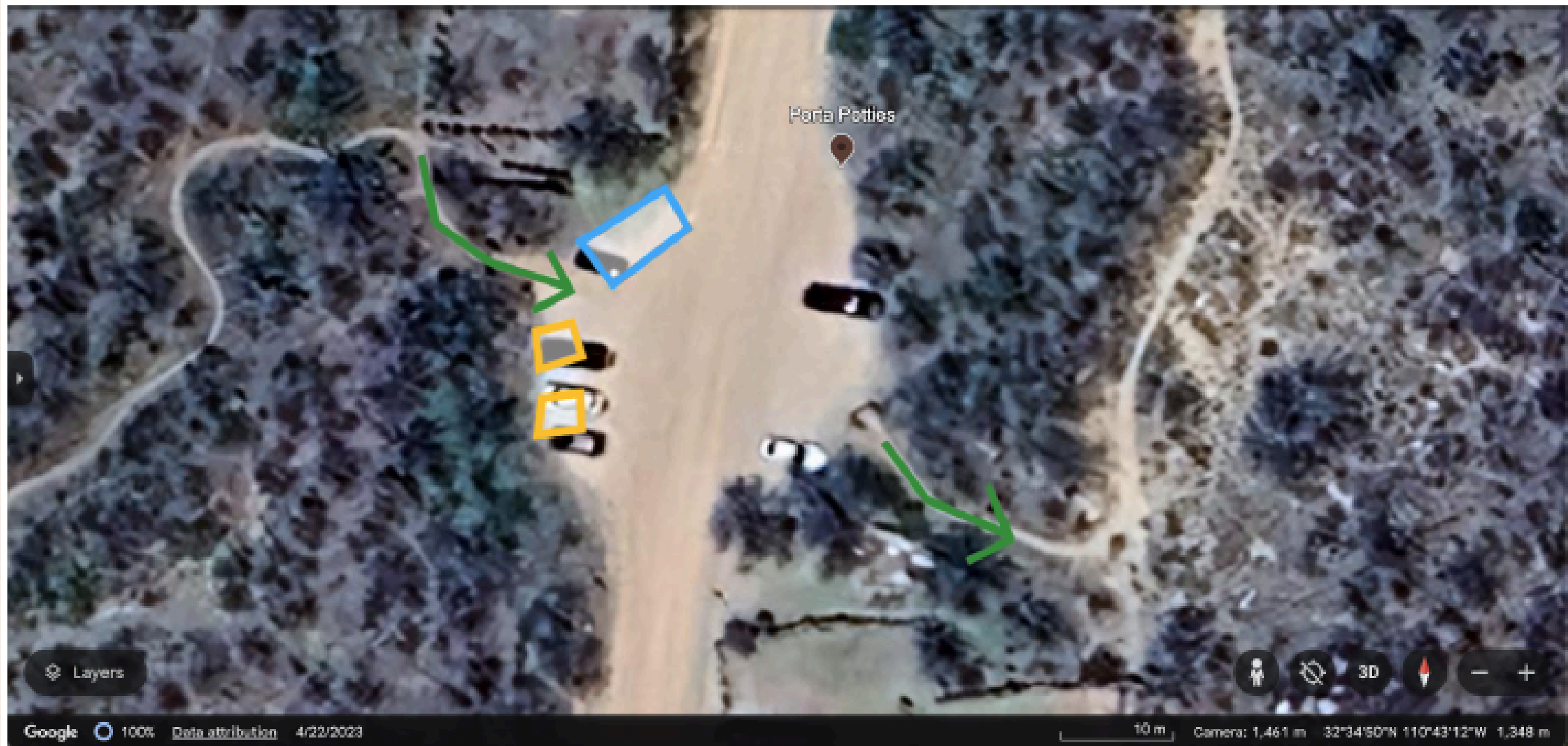
Charleau Gap: 32.52056, -110.88477, Mile: 145.9, Type: R&R, Crew Access: No



STATIONS VISUAL:

Green = runner path; yellow = EZ Up tents (food area); purple = 10 person tents; blue = volunteer parking; gray = crew parking; brown = potties

Oracle: 32.58088, -110.72029, Mile: 114.3, Type: Full, Crew Access: No



STATIONS VISUAL:


Green = runner path; yellow = EZ Up tents (food area); purple = 10 person tents; blue = volunteer parking; gray = crew parking; brown = potties

Tiger Mine: 32.65032, -110.73137, Mile: 105.3, Type: Sleep, Crew Access: Yes





Neighboring Jurisdictions : Feedback

- Town of Superior: Confirmed *all on track*
 - Pima County: Applicant provided Special Use Permit for event & permit to operate from Health Dept; Applicant awaiting specific food permit (submitted for review)
 - Santa Cruz County
 - Patagonia
- 

STAFF RECOMMENDATION

RECOMMENDATION OF APPROVAL

Applicant has submitted all documents required of *large special event* permitting.

Staff recommends approval of SEP-003-25: AZ MONSTER 300 as presented.



PROMO VID - AZ



THANK YOU!!

:)

