

This schedule shows the contested County races from the "COUNTY-WIDE ANALYSIS 2016-2018  
The "ROW" column denotes the row in that Excel Workbook where the data can be found.

2016	ROW	VOTES	% DIFF
SUPERVISOR 2 REP	337	1194	11.77%
SUPERVISOR 2 REP	338	1029	11.77%
SUPERVISOR 2 REP	339	726	4.34%
SUPERVISOR 2 REP	340	584	2.86%
SUPERVISOR 2 REP	341	72	0.54%
SUPERVISOR 3 REP	347	1131	5.24%
SUPERVISOR 3 REP	348	2402	5.24%
SUPERVISOR 4 REP	357	2844	4.04%
SUPERVISOR 4 REP	358	2400	4.04%
SUPERVISOR 5 REP	367	3262	9.25%
SUPERVISOR 5 REP	368	1878	9.25%
COUNTY ATTORNEY REP	387	12012	2.19%
COUNTY ATTORNEY REP	388	8571	2.19%
COUNTY SHERIFF REP	407	8110	5.13%
COUNTY SHERIFF REP	408	13165	5.13%

2020	ROW
SUPERVISOR 1 DEM	318
SUPERVISOR 1 DEM	319
SUPERVISOR 2 REP	337
SUPERVISOR 2 REP	338
SUPERVISOR 5 REP	367
SUPERVISOR 5 REP	368
SUPERVISOR 5 REP	369
ASSESSOR REP	377
ASSESSOR REP	378

3-2020-2022-2024 8.5.24 18.34 HRS" Workbook.

VOTES	% DIFF
2874	5.57%
2024	5.26%
6052	5.35%
4420	5.54%
5125	3.23%
3743	0.62%
987	2.42%
24421	7.10%
13659	7.04%

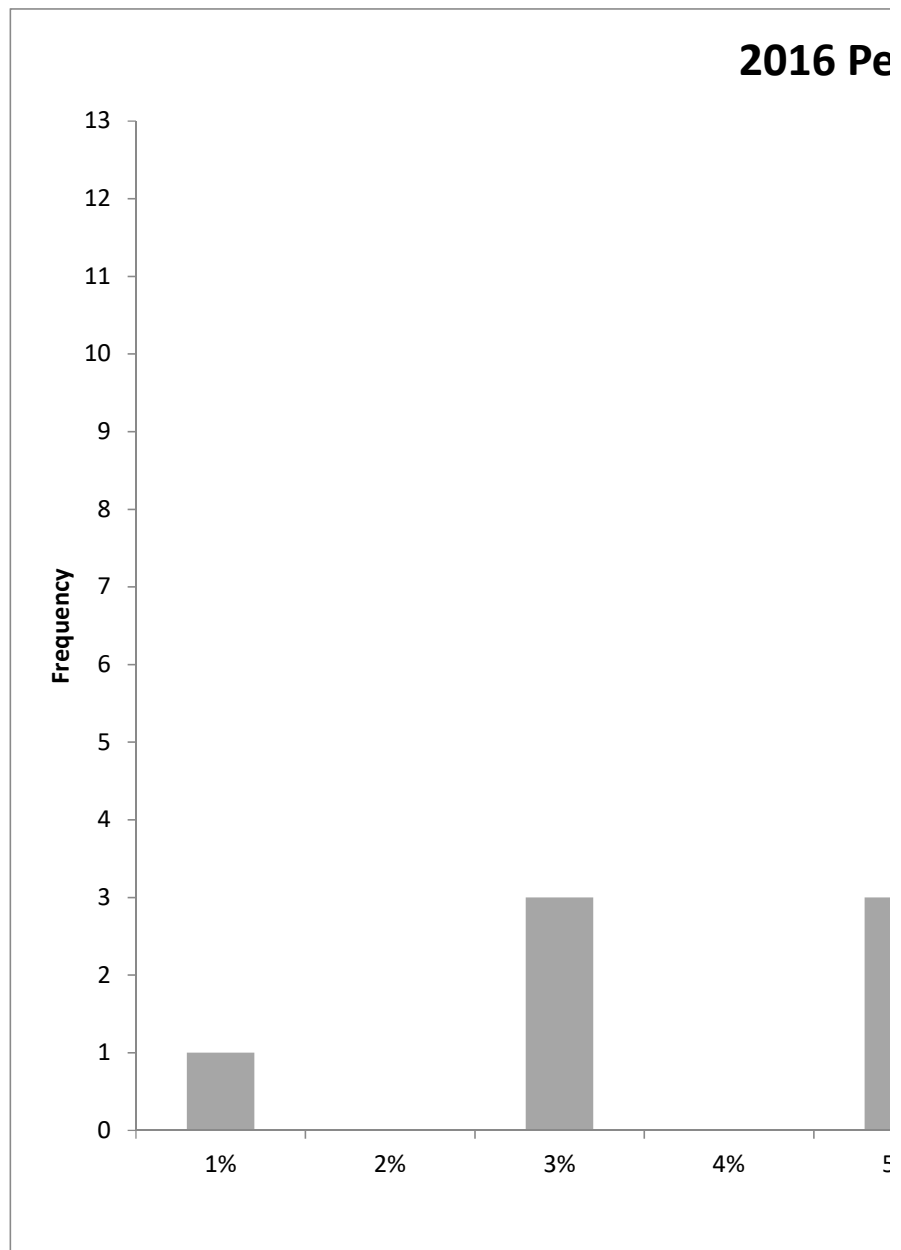
2024 ROW	VOTES	% DIFF
SUPERVISOR 1 DEM	318 3457	1.39%
SUPERVISOR 1 DEM	319 2442	1.05%
SUPERVISOR 1 REP	327 3457	1.39%
SUPERVISOR 1 REP	328 2442	1.05%
SUPERVISOR 3 REP	347 3806	4.39%
SUPERVISOR 3 REP	348 3060	4.48%
SUPERVISOR 4 REP	357 5784	0.19%
SUPERVISOR 4 REP	358 3397	0.33%
SUPERVISOR 5 REP	367 25306	0.58%
SUPERVISOR 5 REP	368 12217	0.91%
SUPERVISOR 5 REP	369 2097	0.48%
ASSESSOR REP	377 26696	0.07%
ASSESSOR REP	378 10353	0.00%
COUNTY ATTORNEY REP	387 20607	0.12%
COUNTY ATTORNEY REP	388 17171	0.05%
COUNTY SHERIFF REP	407 25306	0.58%
COUNTY SHERIFF REP	408 12217	0.91%
COUNTY SHERIFF REP	409 2097	0.48%



## PERCENTS

1%  
2%  
3%  
4%  
5%  
6%  
7%  
8%  
9%  
10%  
11%  
12%

<i>PERCENTS</i>	<i>Frequency</i>
1%	1
2%	0
3%	3
4%	0
5%	3
6%	4
7%	0
8%	0
9%	0
10%	2
11%	0
12%	2
More	0

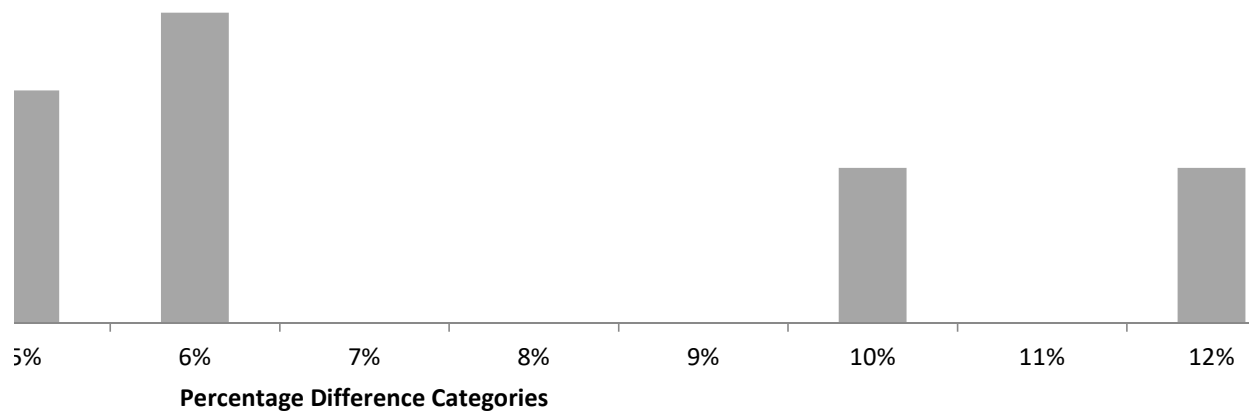


<b>2016</b>	
<i>% DIFF</i>	
Mean	0.055318343
Standard Error	0.008899366
Median	0.051335944
Mode	0.052376587
Standard Deviation	0.034467095
Sample Variance	0.001187981
Kurtosis	-0.379978354

Skewness	0.728878698
Range	0.112384504
Minimum	0.005359776
Maximum	0.11774428
Sum	0.829775145
Count	15

---

## Percentage Difference Probabilities/Occurrences



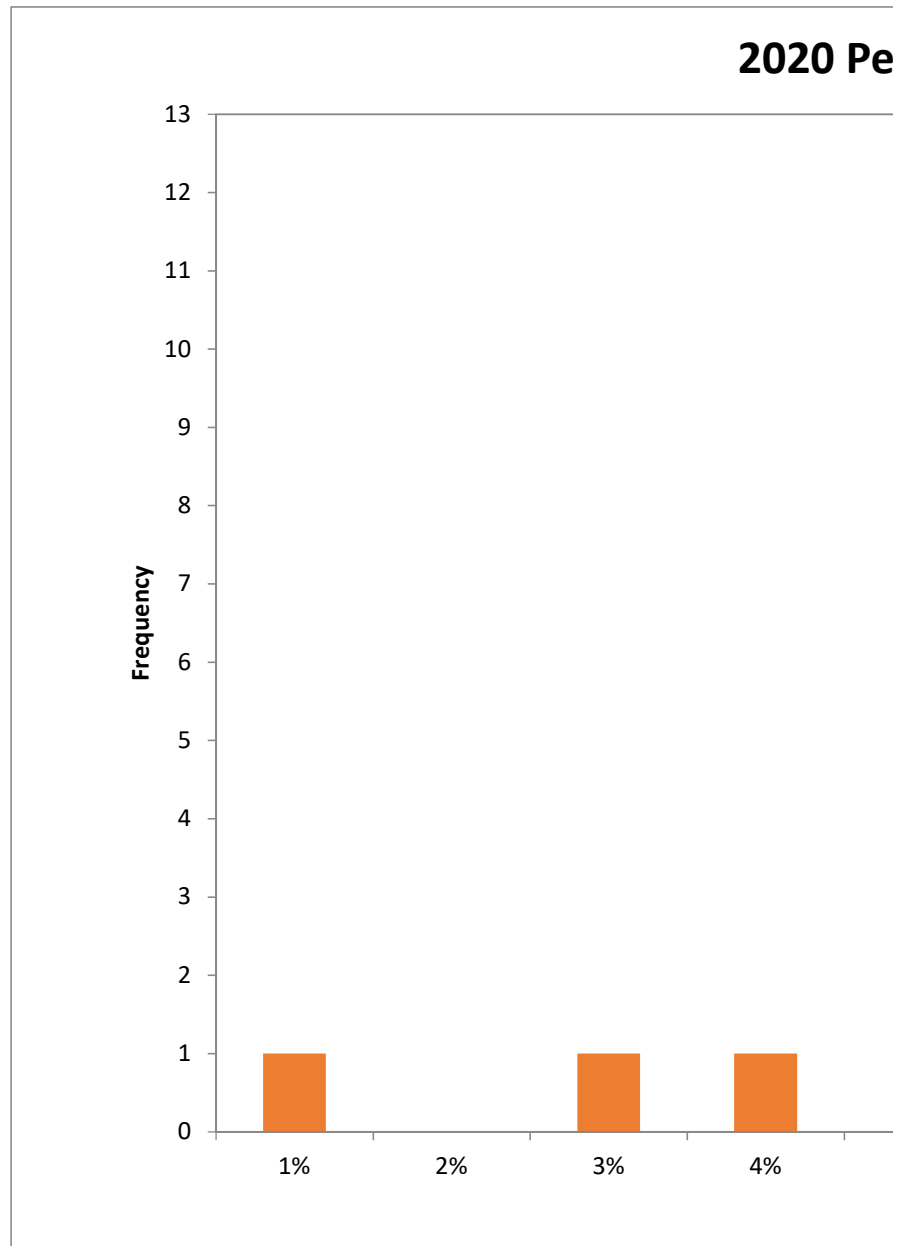




■ Frequency

More

<i>PERCENTS</i>	<i>Frequency</i>
1%	1
2%	0
3%	1
4%	1
5%	0
6%	4
7%	0
8%	2
9%	0
10%	0
11%	0
12%	0
More	0



<b>2020</b>	
<i>% DIFF</i>	

Mean	0.046827599
Standard Error	0.007211139
Median	0.053454275
Mode	#N/A
Standard Deviation	0.021633416
Sample Variance	0.000468005
Kurtosis	-0.058384961

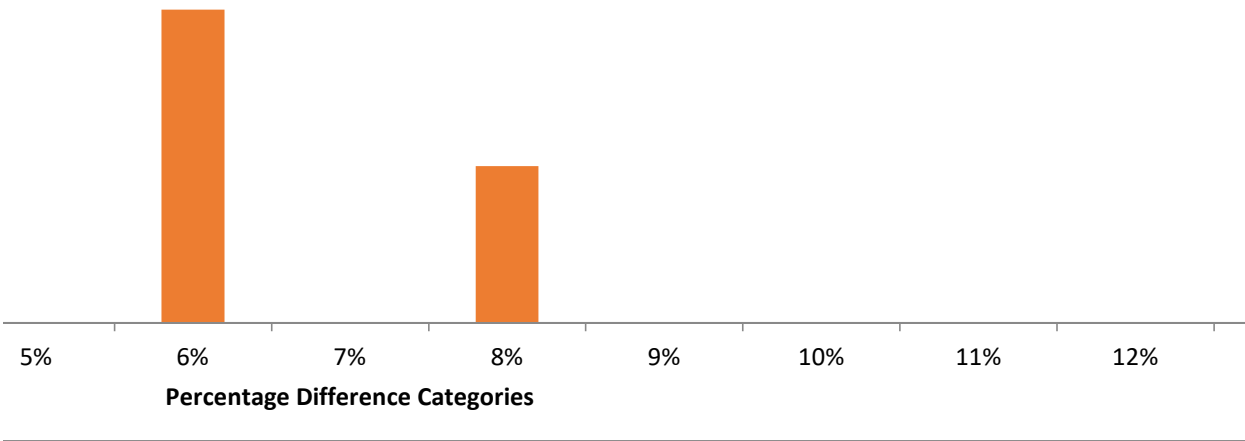
Skewness	-0.830764241
Range	0.064812296
Minimum	0.006233004
Maximum	0.0710453
Sum	0.421448393
Count	9

---

---

# Percentage Difference Probabilities/Occurrences

---

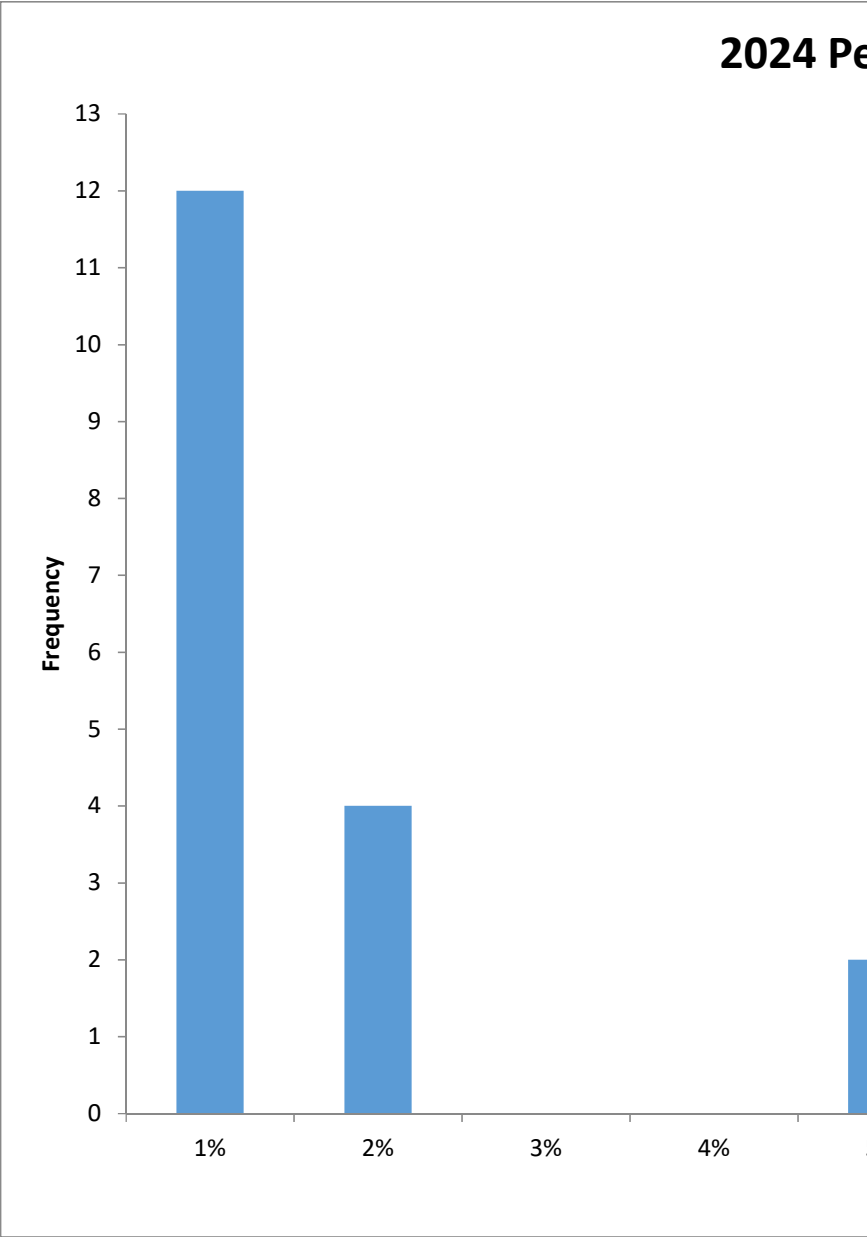




Frequency

More

PERCENTS	Frequency
1%	12
2%	4
3%	0
4%	0
5%	2
6%	0
7%	0
8%	0
9%	0
10%	0
11%	0
12%	0
More	0



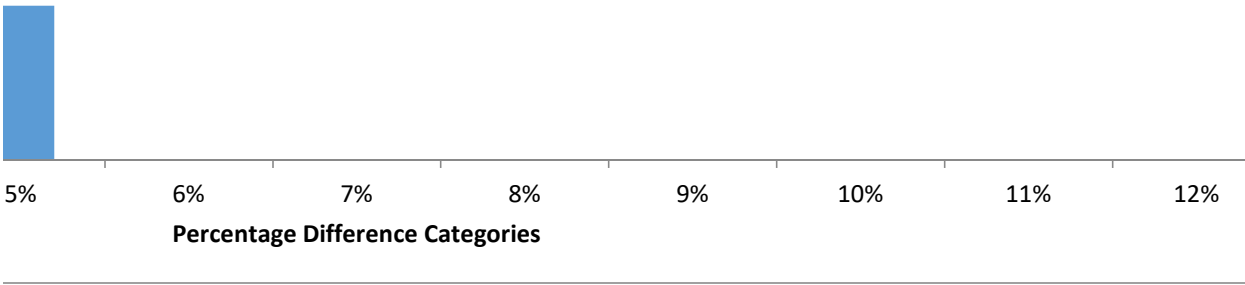
2024	
% DIFF	
Mean	0.010246678
Standard Error	0.003103313
Median	0.005846842
Mode	0.013899893
Standard Deviation	0.013166241
Sample Variance	0.00017335
Kurtosis	4.073663064

Skewness	2.15913035
Range	0.044761172
Minimum	3.69539E-05
Maximum	0.044798126
Sum	0.184440203
Count	18



---

# Percentage Difference Probabilities/Occurrences

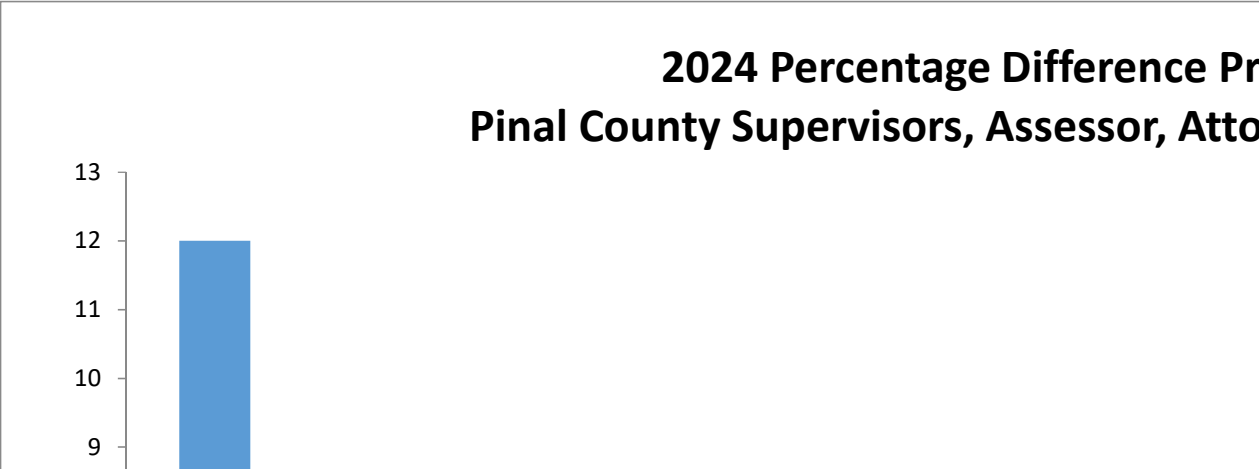


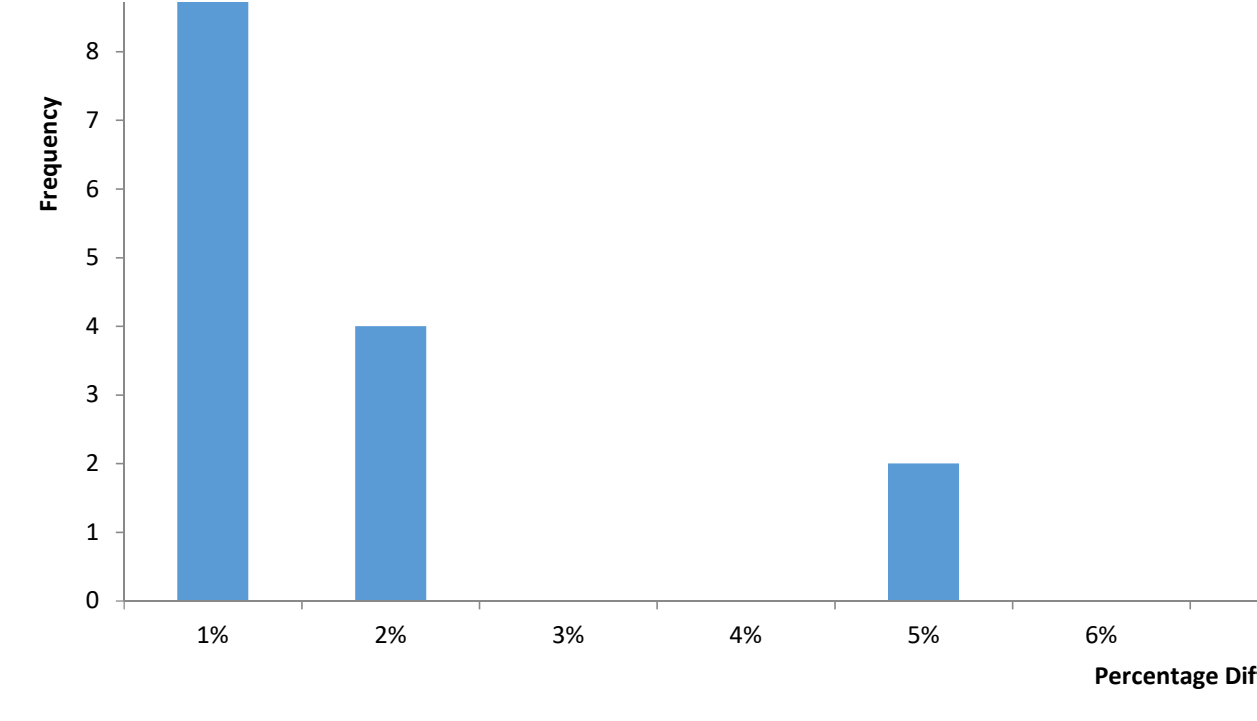


■ Frequency

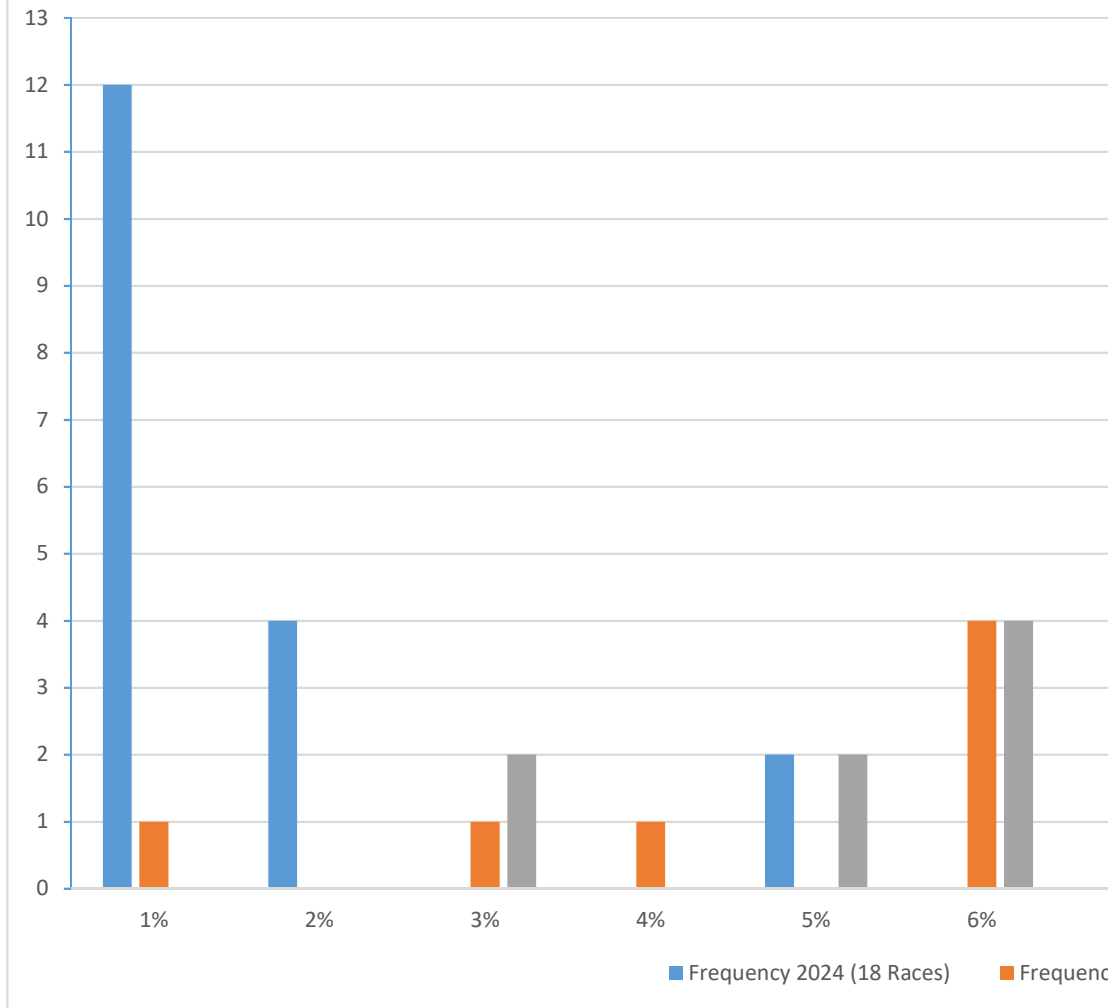
More

<i>PERCENTS</i>	<i>Frequency 2024 (18 Races)</i>	<i>Frequency 2020 (9 Races)</i>	<i>Frequency 2016 (15 Races)</i>
1%	12	1	0
2%	4	0	0
3%	0	1	2
4%	0	1	0
5%	2	0	2
6%	0	4	4
7%	0	0	0
8%	0	2	0
9%	0	0	0
10%	0	0	2
11%	0	0	0
12%	0	0	2
More	0	0	0

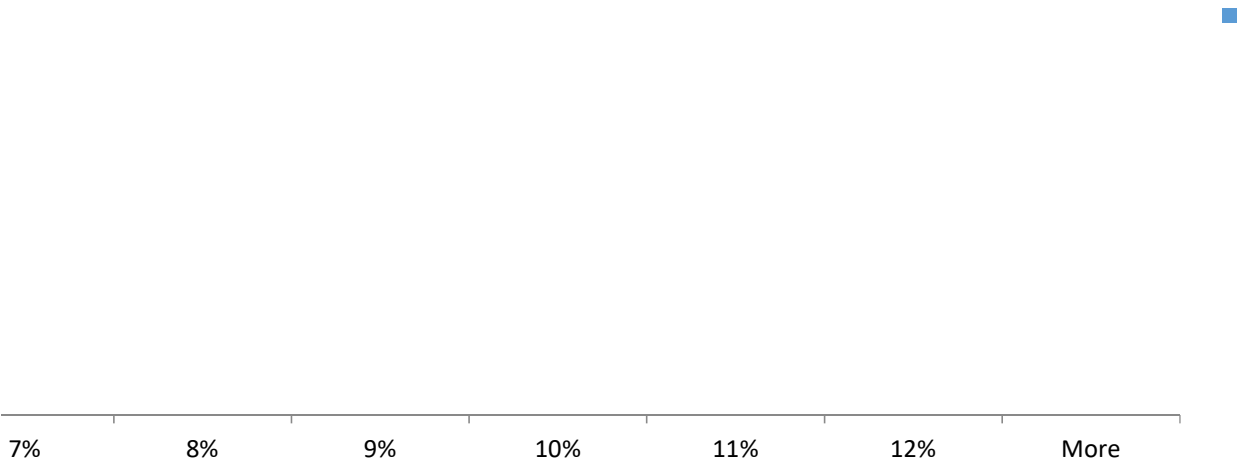




Combined Frequencies Pinal County Supervisors, Asses  
2

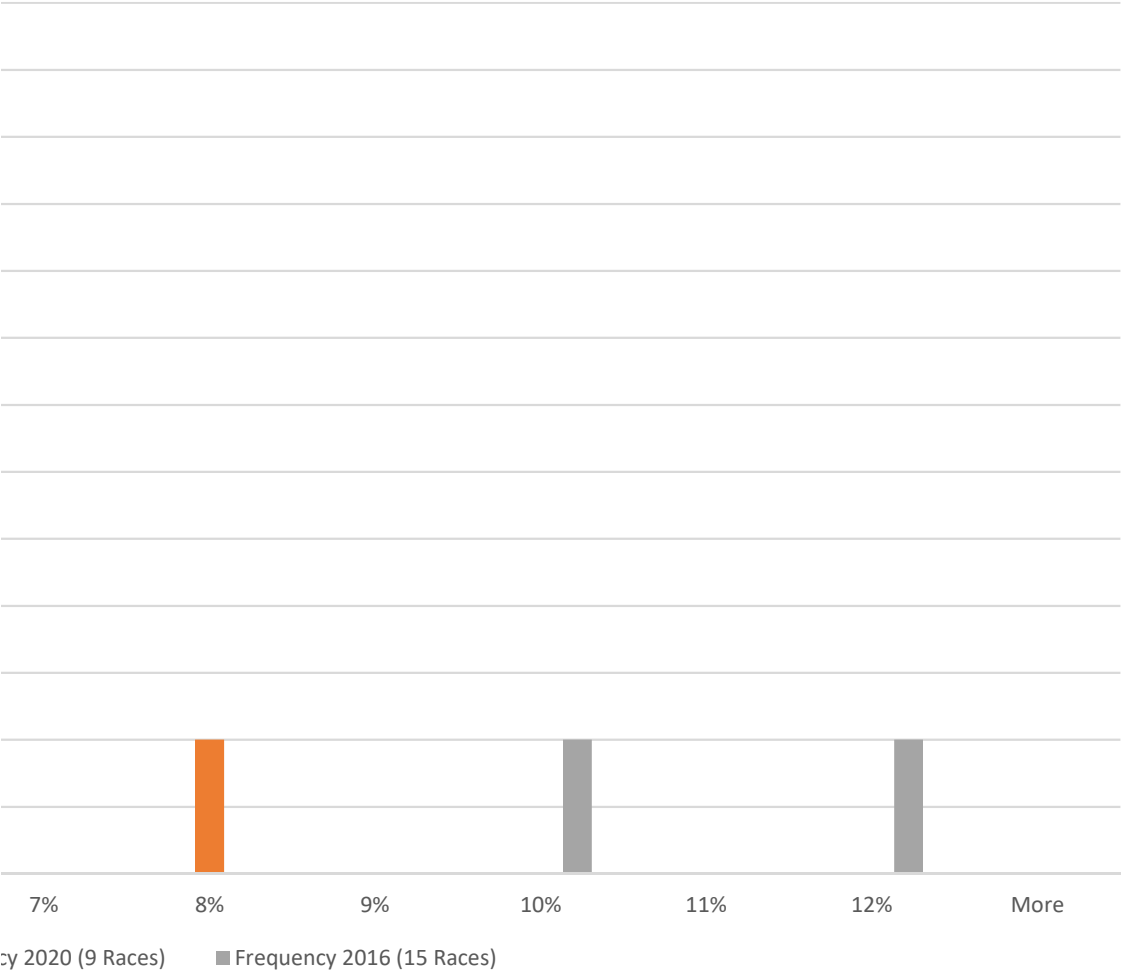


Probabilities/Occurrences  
County, and Sheriff Contested Races

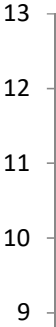


Reference Categories

ssor, Attorney, and Sheriff Contested Races 2016, 2020, &  
!024

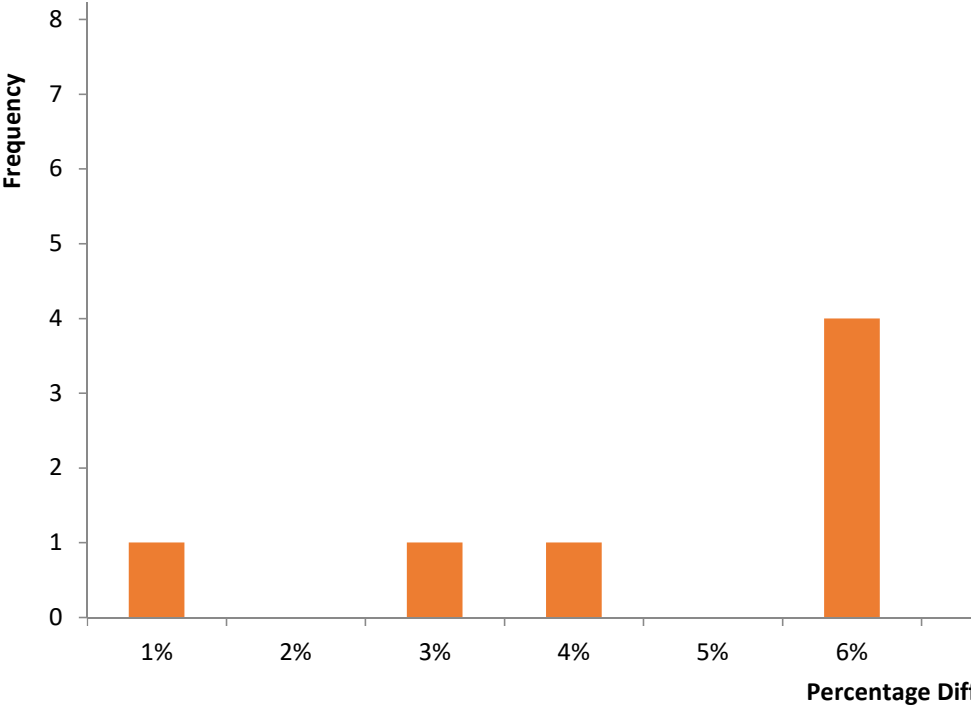


2020 Percentage Difference  
Pinal County Supervisors, Assessors



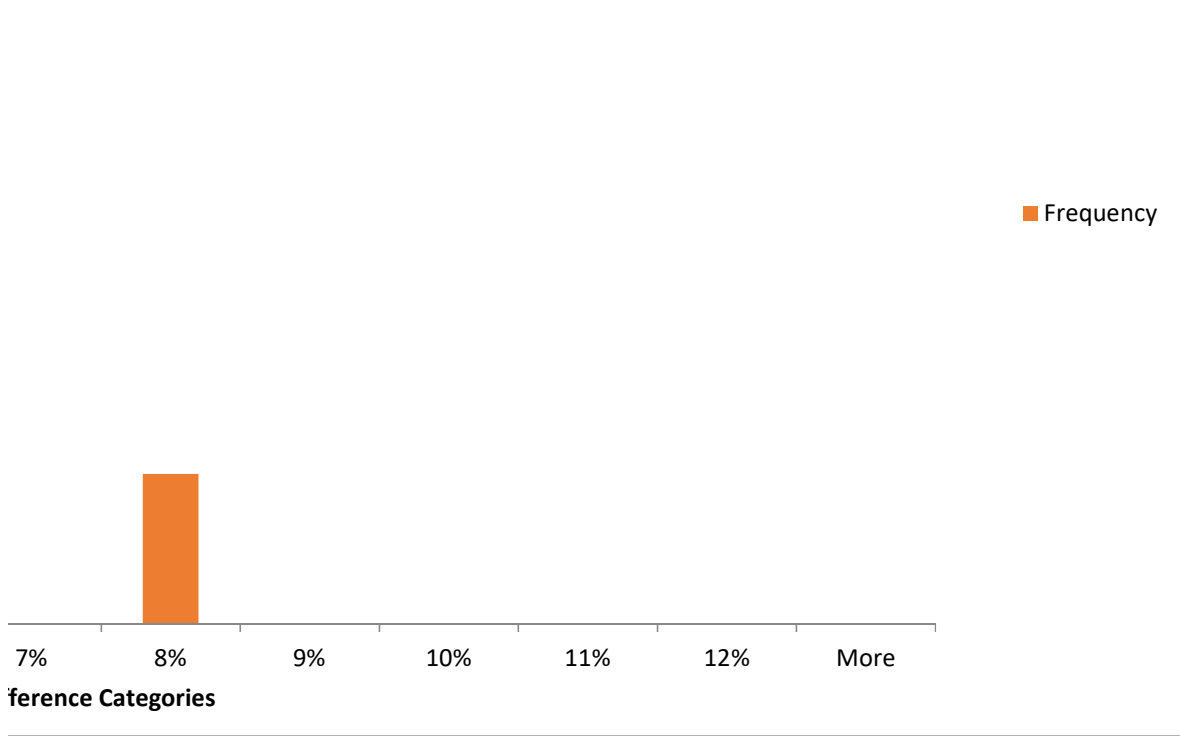


Frequency



---

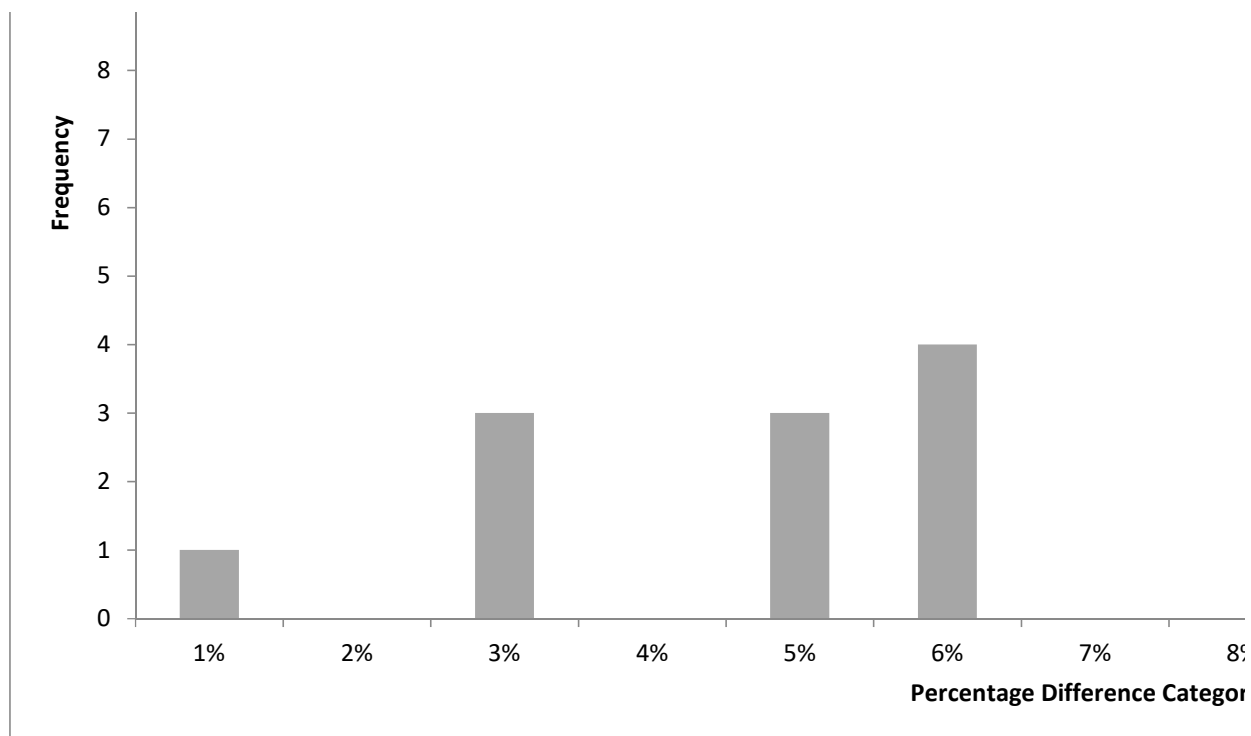
**nce Probabilities/Occurrences  
r, Attorney, and Sheriff Contested Races**



---

**2016 Percentage Difference Prob**  
**Pinal County Supervisors, Assessor, Attorn**

13  
12  
11  
10  
9



---

**abilities/Occurrences**  
**ey, and Sheriff Contested Races**

