



GEORGE CAIRO ENGINEERING, INC.

- Consulting Civil & Agricultural Engineers
- Canal Energy System Consultants
- Water Resource Specialists
- Land Surveyors

1630 South Stapley Drive, Stapley Center Suite 117 • Mesa, Arizona 85204

480.921.4080 480.921.4087 Fax

www.gcairoinc.com

Transmittal

Saturday, June 08, 2024

Company	Pinal County		
Address	P. O. Box 827, Florence, AZ 85132		
Phone		Fax	
Re:	New Magma Irrigation and Drainage District (NMIDD) – Abandonment of Right-of-Way Use		

Transmitted herewith are the following:

Copies	Description
1	NMIDD – Abandonment of Right-of-Way Use Notice
1	Consent to Abandonment of Irrigation Distribution System and Waiver of Receipt of Agricultural Irrigation Water Service
1	Tract No. NMC-007-SL Exhibit 'A' Abandonment Legal Description and Exhibit
1	Tract No. NMC-026 Exhibit 'A' Abandonment Legal Description and Exhibit
1	Tract No. NMC-003 Exhibit 'A' Abandonment Legal Description and Exhibit
1	Tract No. NMC-027 Exhibit 'A' Abandonment Legal Description and Exhibit

Comments: To Landowner; Please read the Abandonment of Right-of-Way Use Notice. Please sign and have the Consent to Abandonment of Irrigation Distribution System and Waiver of Receipt of Agricultural Irrigation Water Service notarized and return the notarized and copy of a receipt of cost associated with the notary to George Cairo Engineering, Inc. in the enclosed envelope. You will reimburse for the notary expense incurred.

Sent By:

Akayla Van Sickle

CC:	
File:	NMI-99



GEORGE CAIRO ENGINEERING, INC

- Consulting Civil & Agricultural Engineers
- Water Resources Specialists
- Land Surveyors

June 5, 2024

Pinal County, Arizona
PO BOX 827 FLORENCE, AZ 85132

RE: New Magma Irrigation and Drainage District – Abandonment of Right-of-Way Use – Signature required for Consent to Abandonment within 30 days of receipt

Dear Landowner,

Hope this letter finds you well. This letter is to notify you that the New Magma Irrigation and Drainage District and the United States Interior Bureau of Reclamation are in the process of abandoning an irrigation pipeline and associated irrigation easement that runs parallel and along the southwest side of Hunt Highway. It has been determined that a portion of the pipeline and easement are located within your property boundaries, and we are requiring signatures from all the landowners acknowledging and consenting to the abandonment.

Due to the growth in the area, there is no longer a need to convey irrigation water down this pipeline for agricultural deliveries and therefore no longer a need for the easement. This letter and the attached documents are to inform you that the New Magma Irrigation and Drainage District and the United States Department of Interior Bureau of Reclamation no longer requires the irrigation distribution system or easement located on your land and are in the process of abandoning the pipeline and the easement to release the land back to the underlying fee title owner. New Magma Irrigation District will be capping this pipeline off at the headwall of the last turnout that is still receiving water on this system, upstream of the abandonment area to prevent any water from entering into the pipeline system within your property boundary. We kindly request your signature on the attached document, acknowledging the immediate abandonment of the irrigation system and its appurtenances in order to affirm the discontinuation of the easement granted by the United States Bureau of Reclamation.

The attached Consent to Abandonment document needs to be signed within 30 days of receiving this notice and mail it back to my office at your earliest convenience. This timeline is critical to the abandonment project and delay in the submission will cause inconvenience to the process that depend on it. A pre-addressed and stamped envelope have been included for your use.

If there are any questions, please feel free to contact me.

Sincerely,

Akayla VanSickle
GEORGE CAIRO ENGINEERING, INC.

cc: Shelton Van Allen, General Manager – NMIDD

EXHIBIT 'A'
A DESCRIPTION OF REAL ESTATE IN PINAL COUNTY, STATE OF ARIZONA

THAT PORTION OF TRACT NMC-007-SL OF THE RIGHT-OF-WAY BY THE UNITED STATES, BUREAU OF RECLAMATION AS DESCRIBED IN THAT CERTAIN RIGHT-OF-WAY NOTICE BY THE UNITED STATES DATED DECEMBER 31, 1985, AND RECORDED JANUARY 2, 1986 IN DOCKET 1331, PAGE 366, RECORDS OF PINAL COUNTY AND BEING A PORTION OF THE NORTHWEST QUARTER OF SECTION 18, TOWNSHIP 3 SOUTH, RANGE 8 EAST OF THE GILA AND SALT RIVER MERIDIAN, PINAL COUNTY, ARIZONA, BEING DESCRIBED AS FOLLOWS:

BEGINNING AT THE NORTHWEST CORNER OF SAID SECTION 18 (POB);

THENCE, UPON THE NORTH LINE OF SAID SECTION 18, NORTH 89°45'50" EAST, A DISTANCE OF 134.72 FEET;

THENCE, SOUTH 49°22'19" EAST, A DISTANCE OF 1910.84 FEET;

THENCE, SOUTH 89°45'43" WEST, A DISTANCE OF 82.53 FEET;

THENCE, SOUTH 49°22'19" EAST, A DISTANCE OF 76.42 FEET;

THENCE, NORTH 89°45'43" EAST, A DISTANCE OF 82.53 FEET;

THENCE, SOUTH 49°22'19" EAST, A DISTANCE OF 33.76 FEET;

THENCE, SOUTH 89°45'43" WEST, A DISTANCE OF 125.32 FEET;

THENCE, NORTH 49°22'19" WEST, A DISTANCE OF 1621.03 FEET;

THENCE, NORTH 58°58'20" WEST, A DISTANCE OF 359.98 FEET TO THE WEST LINE OF SAID SECTION 18;

THENCE, UPON SAID WEST LINE, NORTH 03°26'22" WEST, A DISTANCE OF 75.00 FEET TO THE POINT OF BEGINNING (POB).

FOR AN AREA OF 3.99 MORE OR LESS ACRES.




GEORGE CAIRO ENGINEERING, INC.
1630 S. STAPLEY DR., SUITE 117
MESA, ARIZONA 85204
(480) 921 - 4080
www.gcairoinc.com

**NEW MAGMA IRRIGATION &
DRAINAGE DISTRICT**

JOB NO: NMI-100
TRACT NO. NMC-007-SL

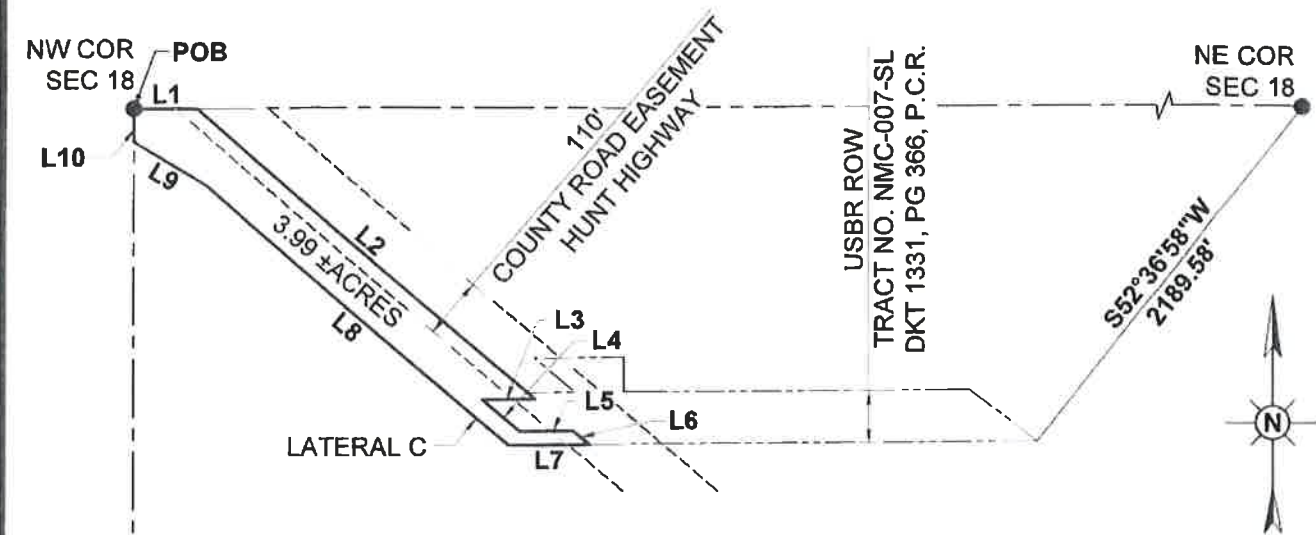
HANCOCK HUNT HIGHWAY SOUTH

EXHIBIT 'A' ABANDONMENT

USBR CASE # 21-035

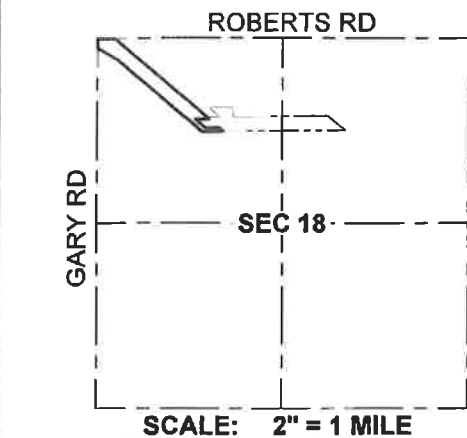
1 OF 2

**A PORTION OF THE NORTHWEST QUARTER OF SECTION 18, T3S, R8E G&SRM,
PINAL COUNTY, STATE OF ARIZONA**



LEGEND

- USBR ROW
- USBR ROW TO BE ABANDONED



LINE TABLE		
LINE #	BEARING	LENGTH
L1	N89°45'50"E	134.72'
L2	S49°22'19"E	1910.84'
L3	S89°45'43"W	82.53'
L4	S49°22'19"E	76.42'
L5	N89°45'43"E	82.53'
L6	S49°22'19"E	33.76'
L7	S89°45'43"W	125.32'
L8	N49°22'19"W	1621.03'
L9	N58°58'20"W	359.98'
L10	N03°26'22"W	75.00'



GCE inc.
GEORGE CAIRO ENGINEERING, INC.
 1630 S. STAPLEY DR., SUITE 117
 MESA, ARIZONA 85204
 (480) 921 - 4080
 www.gcairoinc.com

**NEW MAGMA IRRIGATION &
DRAINAGE DISTRICT**

JOB NO: NMI-100
 TRACT NO. NMC-007-SL

HANCOCK HUNT HIGHWAY SOUTH

EXHIBIT 'A' ABANDONMENT

USBR CASE # 21-035

2 OF 2

EXHIBIT 'B'
A DESCRIPTION OF REAL ESTATE IN PINAL COUNTY, STATE OF ARIZONA

ALL OF TRACT NMC-026 OF THE RIGHT-OF-WAY BY THE UNITED STATES, BUREAU OF RECLAMATION AS DESCRIBED IN THAT NOTICE OF EXERCISE OF RESERVED RIGHT-OF-WAY BY THE UNITED STATES OF AMERICA DATED JUNE 10, 1987 AND RECORDED JUNE 11, 1987 IN DOCKET 1449, PAGE 743, RECORDS OF PINAL COUNTY AND BEING A PORTION OF THE SOUTHEAST QUARTER OF SECTION 2, TOWNSHIP 3 SOUTH, RANGE 7 EAST OF THE GILA AND SALT RIVER MERIDIAN, PINAL COUNTY, ARIZONA, BEING DESCRIBED AS FOLLOWS:

COMMENCING AT THE SOUTHEAST QUARTER OF SAID SECTION 2;

THENCE, UPON THE SOUTH LINE OF SAID SECTION 2, SOUTH 89°31'36" WEST, A DISTANCE OF 106.12 FEET, TO THE POINT OF BEGINNING (POB);


THENCE, CONTINUING SOUTH 89°31'36" WEST, A DISTANCE OF 71.10 FEET;

THENCE, NORTH 40°37'41" EAST, A DISTANCE OF 46.74 FEET;

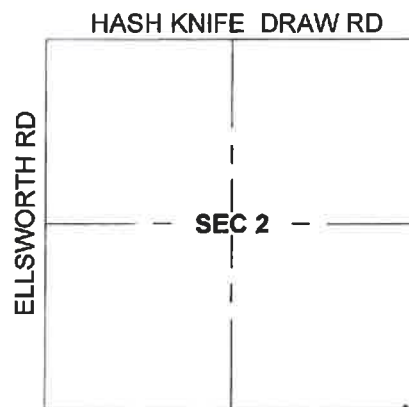
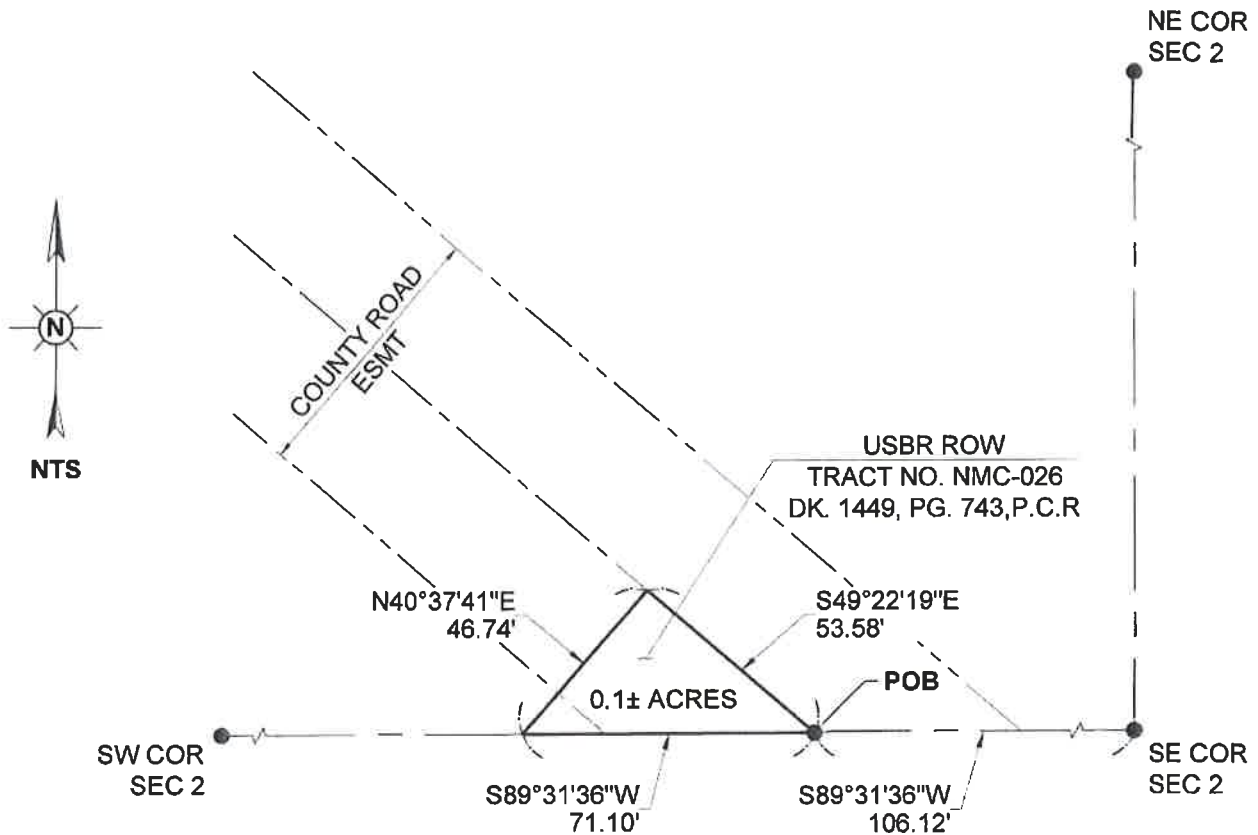
THENCE, SOUTH 49°22'19" EAST, A DISTANCE OF 53.58 FEET TO THE POINT OF BEGINNING (POB).

CONTAINING AN AREA OF 0.1 MORE OR LESS ACRES.



 GEORGE CAIRO ENGINEERING, INC. 1630 S. STAPLEY DR., SUITE 117 MESA, ARIZONA 85204 (480) 921 - 4080 www.gcairoinc.com	NEW MAGMA IRRIGATION & DRAINAGE DISTRICT	HANCOCK HUNT HIGHWAY SOUTH	
	JOB NO: NMI-100	EXHIBIT 'B' ABANDONMENT	
	TRACT NO. NMC-026	USBR CASE # 21-035	1 OF 2

**A PORTION OF THE SOUTHEAST QUARTER OF SECTION 2, T3S, R7E, G&SRM
PINAL COUNTY, ARIZONA**



SCALE: 2" = 1 MILE

LEGEND

 USBR ROW TO BE ABANDONED



GCE inc.
GEORGE CAIRO ENGINEERING, INC.
 1630 S. STAPLEY DR., SUITE 117
 MESA, ARIZONA 85204
 (480) 921 - 4080
 www.gcairoinc.com

**NEW MAGMA IRRIGATION &
DRAINAGE DISTRICT**

JOB NO: NMI-100
 TRACT NO. NMC-026

HANCOCK HUNT HIGHWAY SOUTH

EXHIBIT 'B' ABANDONMENT

USBR CASE # 21-035

2 OF 2

EXHIBIT 'C'
A DESCRIPTION OF REAL ESTATE IN PINAL COUNTY, STATE OF ARIZONA

THAT PORTION OF TRACT NMC-003 OF THE RIGHT-OF-WAY BY THE UNITED STATES, BUREAU OF RECLAMATION AS DESCRIBED IN THAT CERTAIN NOTICE OF EXERCISE OF RESERVED RIGHT-OF-WAY BY THE UNITED STATES OF AMERICA DATED JUNE 10, 1987 RECORDED JUNE 11, 1987 IN DOCKET 1449, PAGE 739, RECORDS OF PINAL COUNTY, ARIZONA, LYING WITHIN THE NORTHWEST QUARTER OF SECTION 12, TOWNSHIP 3 SOUTH, RANGE 7 EAST OF THE GILA AND SALT RIVER MERIDIAN, PINAL COUNTY, ARIZONA, AND DESCRIBED AS FOLLOWS:

COMMENCING AT THE NORTHWEST CORNER OF SAID SECTION 12;

THENCE UPON THE WEST SECTION LINE OF SAID SECTION 12, SOUTH 00°09'49" EAST, A DISTANCE OF 164.79 FEET TO THE POINT OF BEGINNING (POB).

THENCE, SOUTH 49°22'19" EAST, A DISTANCE OF 1744.93 FEET;

THENCE, SOUTH 00°09'49" EAST, A DISTANCE OF 9.13 FEET;

THENCE, NORTH 89°32'05" EAST, A DISTANCE OF 10.53 FEET;

THENCE, SOUTH 49°22'19" EAST, A DISTANCE OF 115.80 FEET;

THENCE, SOUTH 49°37'41" WEST, A DISTANCE OF 45.00 FEET;

THENCE, NORTH 49°22'19" WEST, A DISTANCE OF 1835.81 FEET;

THENCE, NORTH 00°09'49" WEST, A DISTANCE OF 59.44 FEET TO THE POINT OF BEGINNING (POB).

CONTAINING AN AREA OF 1.92 MORE OR LESS ACRES.




GEORGE CAIRO ENGINEERING, INC.
1630 S. STAPLEY DR., SUITE 117
MESA, ARIZONA 85204
(480) 921 - 4080
www.gcairoinc.com

**NEW MAGMA IRRIGATION &
DRAINAGE DISTRICT**

JOB NO: NMI-100
TRACT NO. NMC-003

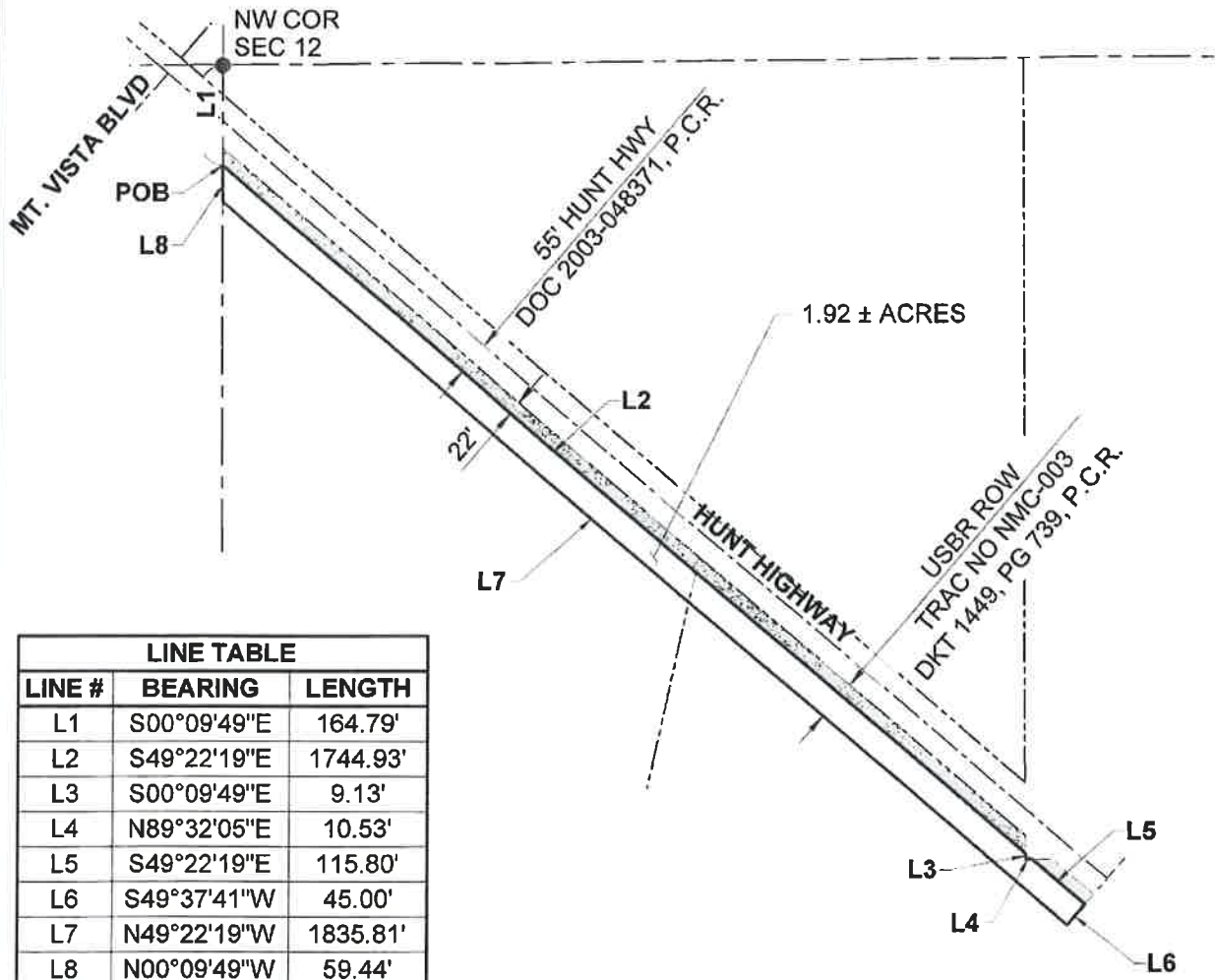
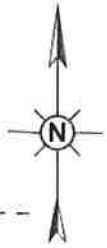
HANCOCK HUNT HIGHWAY SOUTH

EXHIBIT 'C' ABANDONMENT

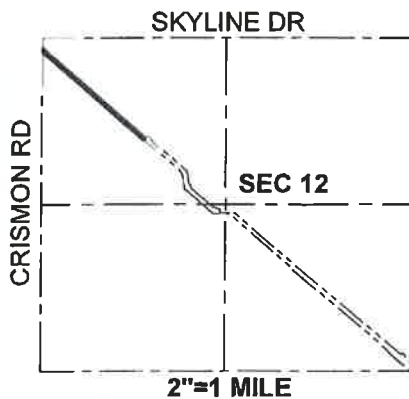
USBR CASE # 21-035

1 OF 6

**A PORTION OF THE NORTHWEST QUARTER SECTION 12, T3S, R7E G&SRM
PINAL COUNTY, STATE OF ARIZONA**



LINE TABLE		
LINE #	BEARING	LENGTH
L1	S00°09'49"E	164.79'
L2	S49°22'19"E	1744.93'
L3	S00°09'49"E	9.13'
L4	N89°32'05"E	10.53'
L5	S49°22'19"E	115.80'
L6	S49°37'41"W	45.00'
L7	N49°22'19"W	1835.81'
L8	N00°09'49"W	59.44'



LEGEND



USBR ROW

ABANDONED PER AFFIRMATION OF
ABANDONMENT FEE NO. 2015-061995 (USBR CASE NO.14-012)

USBR ROW TO BE ABANDONED



GCE inc
GEORGE CAIRO ENGINEERING, INC.
 1630 S. STAPLEY DR., SUITE 117
 MESA, ARIZONA 85204
 (480) 921 - 4080
 www.gcairoinc.com

**NEW MAGMA IRRIGATION &
DRAINAGE DISTRICT**

JOB NO: NMI-100
 TRACT NO NMC-003

HANCOCK HUNT HIGHWAY SOUTH

EXHIBIT 'C' ABANDONMENT

USBR CASE # 21-035

2 OF 6

EXHIBIT 'D'
A DESCRIPTION OF REAL ESTATE IN PINAL COUNTY, STATE OF ARIZONA


THAT PORTION OF TRACT NMC-003 OF THE RIGHT-OF-WAY BY THE UNITED STATES, BUREAU OF RECLAMATION AS DESCRIBED IN THAT CERTAIN NOTICE OF EXERCISE OF RESERVED RIGHT-OF-WAY BY THE UNITED STATES OF AMERICA DATED JUNE 10, 1987 RECORDED JUNE 11, 1987 IN DOCKET 1449, PAGE 739, RECORDS OF PINAL COUNTY, ARIZONA, LYING WITHIN SECTION 12, TOWNSHIP 3 SOUTH, RANGE 7 EAST OF THE GILA AND SALT RIVER MERIDIAN, PINAL COUNTY, ARIZONA, CONTAINING AN AREA OF 5.48 MORE OR LESS ACRES, AND DESCRIBED AS FOLLOWS:

COMMENCING AT THE NORTHWEST CORNER OF SAID SECTION 12;

THENCE UPON THE WEST LINE OF SAID SECTION 12, SOUTH 00°09'49" EAST, A DISTANCE OF 164.79 FEET;
THENCE, SOUTH 49°22'19" EAST, A DISTANCE OF 1874.64 FEET TO THE POINT OF BEGINNING (POB);
THENCE, NORTH 40°37'41" EAST, A DISTANCE OF 55.00 FEET;
THENCE, SOUTH 49°22'19" EAST, A DISTANCE OF 90.00 FEET;
THENCE, SOUTH 40°37'41" WEST, A DISTANCE OF 55.00 FEET;
THENCE, SOUTH 49°22'19" EAST, A DISTANCE OF 808.47 FEET;
THENCE, SOUTH 07°23'05" EAST, A DISTANCE OF 155.39 FEET;
THENCE, SOUTH 28°20'49" EAST, A DISTANCE OF 114.49 FEET;
THENCE, SOUTH 49°22'19" EAST, A DISTANCE OF 446.59 FEET;
THENCE, SOUTH 70°20'04" EAST, A DISTANCE OF 114.82 FEET;
THENCE, NORTH 88°38'27" EAST, A DISTANCE OF 22.93 FEET;
THENCE, SOUTH 00°09'49" EAST, A DISTANCE OF 66.38 FEET;
THENCE, NORTH 88°32'33" EAST, A DISTANCE OF 211.31 FEET;
THENCE, SOUTH 49°22'19" EAST, A DISTANCE OF 2192.13 FEET;
THENCE, SOUTH 40°37'41" WEST, A DISTANCE OF 60.00 FEET;
THENCE, NORTH 49°22'19" WEST, A DISTANCE OF 846.34 FEET;
THENCE, NORTH 40°37'41" EAST, A DISTANCE OF 15.00 FEET;
THENCE, NORTH 49°22'19" WEST, A DISTANCE OF 1318.81 FEET;
THENCE, NORTH 70°20'04" WEST, A DISTANCE OF 114.82 FEET;
THENCE, SOUTH 88°38'27" WEST, A DISTANCE OF 207.71 FEET;
THENCE, NORTH 49°22'19" WEST, A DISTANCE OF 630.79 FEET;
THENCE, NORTH 07°23'05" WEST, A DISTANCE OF 207.71 FEET;
THENCE, NORTH 28°20'49" WEST, A DISTANCE OF 114.49 FEET;
THENCE, NORTH 49°22'19" WEST, A DISTANCE OF 767.66 FEET;
THENCE, NORTH 40°37'41" EAST, A DISTANCE OF 45.00 FEET TO THE POINT OF BEGINNING (POB).

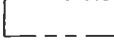


CONTAINING AN AREA OF 5.48 MORE OR LESS ACRES.



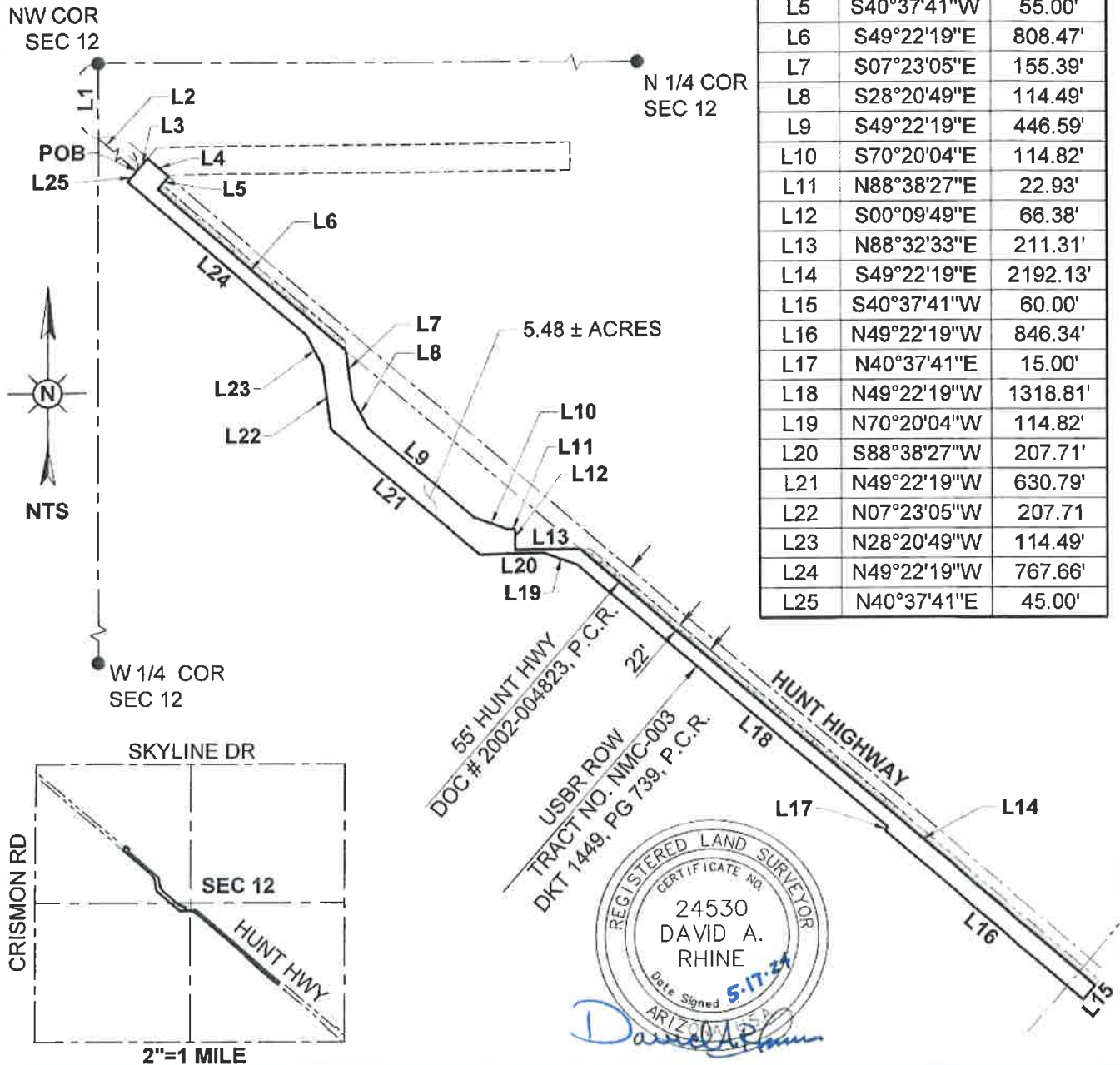
 GEORGE CAIRO ENGINEERING, INC. 1630 S. STAPLEY DR., SUITE 117 MESA, ARIZONA 85204 (480) 921 - 4080 www.gcairoinc.com	NEW MAGMA IRRIGATION & DRAINAGE DISTRICT	HANCOCK HUNT HIGHWAY SOUTH	
	JOB NO: NMI-100	EXHIBIT 'D' ABANDONMENT	
	TRACT NO. NMC-003	USBR CASE # 21-035	3 OF 6

**A PORTION OF SECTION 12, T3S, R7E G&SRM,
PINAL COUNTY, STATE OF ARIZONA**

LEGEND

-  USBR ROW
-  ABANDONED PER AFFIRMATION OF ABANDONMENT
FEE NO. 2015-061995 PER USBR CASE # 14-012
-  USBR ROW TO BE ABANDONED

LINE TABLE		
LINE #	BEARING	LENGTH
L1	S00°09'49"E	164.79'
L2	S49°22'19"E	1874.64'
L3	N40°37'41"E	55.00'
L4	S49°22'19"E	90.00'
L5	S40°37'41"W	55.00'
L6	S49°22'19"E	808.47'
L7	S07°23'05"E	155.39'
L8	S28°20'49"E	114.49'
L9	S49°22'19"E	446.59'
L10	S70°20'04"E	114.82'
L11	N88°38'27"E	22.93'
L12	S00°09'49"E	66.38'
L13	N88°32'33"E	211.31'
L14	S49°22'19"E	2192.13'
L15	S40°37'41"W	60.00'
L16	N49°22'19"W	846.34'
L17	N40°37'41"E	15.00'
L18	N49°22'19"W	1318.81'
L19	N70°20'04"W	114.82'
L20	S88°38'27"W	207.71'
L21	N49°22'19"W	630.79'
L22	N07°23'05"W	207.71'
L23	N28°20'49"W	114.49'
L24	N49°22'19"W	767.66'
L25	N40°37'41"E	45.00'



GCE inc
GEORGE CAIRO ENGINEERING, INC.
 1630 S. STAPLEY DR., SUITE 117
 MESA, ARIZONA 85204
 (480) 921 - 4080
 www.gcairoinc.com

**NEW MAGMA IRRIGATION &
DRAINAGE DISTRICT**

JOB NO: NMI-100
 TRACT NO NMC-003

HANCOCK HUNT HIGHWAY SOUTH

EXHIBIT 'D' ABANDONMENT

USBR CASE # 21-035 4 OF 6

EXHIBIT 'E'
A DESCRIPTION OF REAL ESTATE IN PINAL COUNTY, STATE OF ARIZONA

THAT PORTION OF TRACT NMC-003 OF THE RIGHT-OF-WAY BY THE UNITED STATES, BUREAU OF RECLAMATION AS DESCRIBED IN THAT CERTAIN NOTICE OF EXERCISE OF RESERVED RIGHT-OF-WAY BY THE UNITED STATES OF AMERICA DATED JUNE 10, 1987 RECORDED JUNE 11, 1987 IN DOCKET 1449, PAGE 739, RECORDS OF PINAL COUNTY, ARIZONA, LYING WITHIN THE SOUTHEAST QUARTER OF SECTION 12, TOWNSHIP 3 SOUTH, RANGE 7 EAST OF THE GILA AND SALT RIVER MERIDIAN, PINAL COUNTY, ARIZONA, CONTAINING AN AREA OF 1.88 MORE OR LESS ACRES, AND DESCRIBED AS FOLLOWS:

COMMENCING AT THE SOUTHEAST CORNER OF SAID SECTION 12;

THENCE UPON THE EAST SECTION LINE OF SAID SECTION 12, NORTH 03°23'07" WEST, A DISTANCE OF 28.83 FEET TO THE POINT OF BEGINNING (POB).

THENCE CONTINUING UPON SAID EAST SECTION LINE, NORTH 03°23'07" WEST, A DISTANCE OF 27.92 FEET;

THENCE LEAVING SAID EAST SECTION LINE, NORTH 48°57'20" WEST, A DISTANCE OF 463.03 FEET;

THENCE, NORTH 40°47'44" EAST, A DISTANCE OF 15.82 FEET;

THENCE, NORTH 49°22'19" WEST, A DISTANCE OF 427.05 FEET;

THENCE, SOUTH 40°47'44" WEST, A DISTANCE OF 17.07 FEET;

THENCE, NORTH 49°22'19" WEST, A DISTANCE OF 126.19 FEET;

THENCE, NORTH 40°47'44" EAST, A DISTANCE OF 17.07 FEET;

THENCE, NORTH 49°22'19" WEST, A DISTANCE OF 692.67 FEET;

THENCE, SOUTH 40°37'41" WEST, A DISTANCE OF 60.00 FEET;

THENCE, SOUTH 49°22'19" EAST, A DISTANCE OF 692.48 FEET;

THENCE, NORTH 40°47'44" EAST, A DISTANCE OF 22.93 FEET;

THENCE, SOUTH 49°22'19" EAST, A DISTANCE OF 126.19 FEET;

THENCE, SOUTH 40°47'44" WEST, A DISTANCE OF 22.93 FEET;

THENCE, SOUTH 49°22'19" EAST, A DISTANCE OF 178.35 FEET;

THENCE, SOUTH 44°33'57" EAST, A DISTANCE 249.46 FEET;

THENCE, NORTH 40°47'44" EAST, A DISTANCE 45.14 FEET;

THENCE, SOUTH 48°57'20" EAST, A DISTANCE OF 482.55 FEET TO THE POINT OF BEGINNING (POB).



GCE inc.
GEORGE CAIRO ENGINEERING, INC.
1630 S. STAPLEY DR., SUITE 117
MESA, ARIZONA 85204
(480) 921 - 4080
www.gcairoinc.com

**NEW MAGMA IRRIGATION &
DRAINAGE DISTRICT**

JOB NO: NMI-100

TRACT NO. NMC-003

HANCOCK HUNT HIGHWAY SOUTH

EXHIBIT 'E' ABANDONMENT

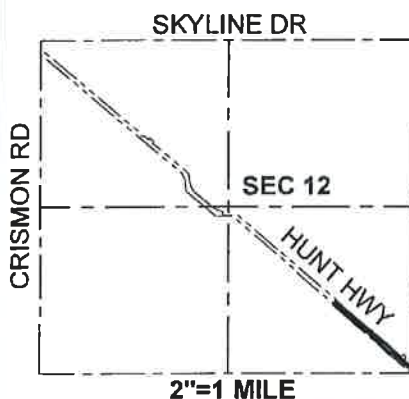
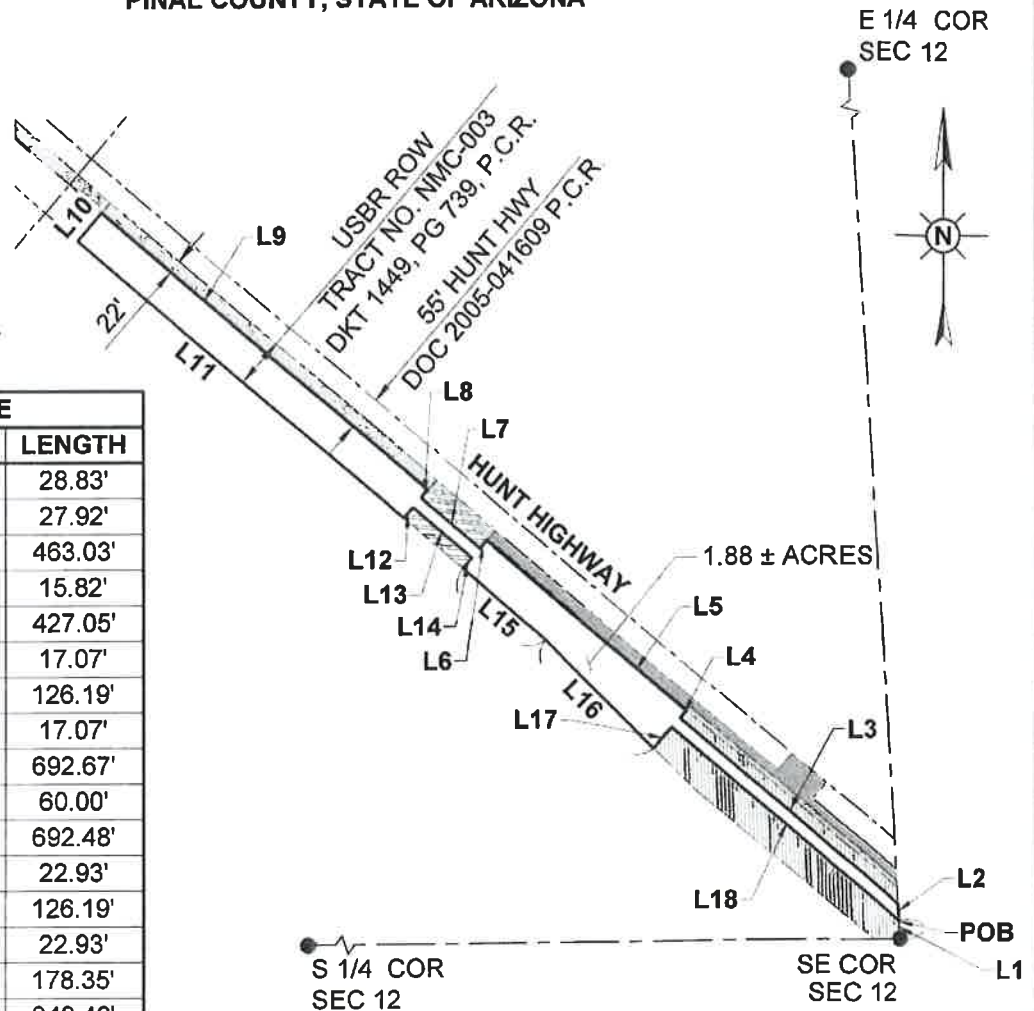
USBR CASE # 21-035

5 OF 6

**A PORTION OF THE SOUTHEAST QUARTER OF SECTION 12, T3S, R7E G&SRM
PINAL COUNTY, STATE OF ARIZONA**



LINE TABLE		
LINE #	BEARING	LENGTH
L1	N03°23'07"W	28.83'
L2	N03°23'07"W	27.92'
L3	N48°57'20"W	463.03'
L4	N40°47'44"E	15.82'
L5	N49°22'19"W	427.05'
L6	S40°47'44"W	17.07'
L7	N49°22'19"W	126.19'
L8	N40°47'44"E	17.07'
L9	N49°22'19"W	692.67'
L10	S40°37'41"W	60.00'
L11	S49°22'19"E	692.48'
L12	N40°47'44"E	22.93'
L13	S49°22'19"E	126.19'
L14	S40°47'44"W	22.93'
L15	S49°22'19"E	178.35'
L16	S44°33'57"E	249.46'
L17	N40°47'44"E	45.14'
L18	S48°57'20"E	482.55'



LEGEND

- USBR ROW
- ABANDONED PER AFFIRMATION OF ABANDONMENT FEE NO. 2017-025456 PER USBR CASE # 08-007
- ABANDONED PER QUITCLAIM DEED FEE NO 2010-118312 PER USBR CASE # 10-022
- ABANDONED PER AFFIRMATION OF ABANDONMENT FEE NO. 2016-036337 CASE # 16-006
- USBR ROW TO BE ABANDONED

GCE inc
GEORGE CAIRO ENGINEERING, INC.
 1630 S. STAPLEY DR., SUITE 117
 MESA, ARIZONA 85204
 (480) 921 - 4080
 www.gcairoinc.com

**NEW MAGMA IRRIGATION &
DRAINAGE DISTRICT**

JOB NO: NMI-100
 TRACT NO. NMC-003

HANCOCK HUNT HIGHWAY SOUTH

EXHIBIT 'E' ABANDONMENT

USBR CASE # 21-035

6 OF 6

EXHIBIT 'F'
A DESCRIPTION OF REAL ESTATE IN PINAL COUNTY, STATE OF ARIZONA

ALL OF TRACT NMC-027 OF THE RIGHT-OF-WAY BY THE UNITED STATES, BUREAU OF RECLAMATION AS DESCRIBED IN THE NOTICE OF EXERCISE OF RESERVED RIGHT-OF-WAY BY THE UNITED STATES OF AMERICA DATED JUNE 10, 1987 AND RECORDED JUNE 11, 1987 IN DOCKET 1449, PAGE 746, RECORDS OF PINAL COUNTY AND BEING A PORTION OF THE NORTH EAST QUARTER OF SECTION 11, TOWNSHIP 3 SOUTH, RANGE 7 EAST OF THE GILA AND SALT RIVER MERIDIAN, PINAL COUNTY, ARIZONA, BEING DESCRIBED AS FOLLOWS:

COMMENCING AT THE NORTHEAST CORNER OF SAID SECTION 11;

THENCE, UPON THE NORTH LINE OF SAID SECTION 11, SOUTH 89°31'36" WEST, A DISTANCE OF 106.12, TO THE POINT OF BEGINNING (POB);

THENCE, SOUTH 40°37'41" WEST, A DISTANCE OF 55.00 FEET;

THENCE, SOUTH 49°22'19" EAST, A DISTANCE OF 187.62 FEET TO THE EAST SECTION LINE OF SAID SECTION 11;

THENCE, UPON SAID EAST LINE OF SECTION 11, SOUTH 00°09'49" EAST, A DISTANCE OF 59.44 FEET;

THENCE, NORTH 49°22'19" WEST, A DISTANCE OF 280.03 FEET;

THENCE, NORTH 40°37'41" EAST, A DISTANCE OF 53.26 FEET TO THE NORTH SECTION LINE OF SAID SECTION 11;

THENCE, NORTH 89°31'36" EAST 71.10 FEET UPON SAID NORTH LINE TO THE POINT OF BEGINNING, (POB).

CONTAINING AN AREA OF 0.31 MORE OR LESS ACRES.




GEORGE CAIRO ENGINEERING, INC.
1630 S. STAPLEY DR., SUITE 117
MESA, ARIZONA 85204
(480) 921 - 4080
www.gcairoinc.com

**NEW MAGMA IRRIGATION &
DRAINAGE DISTRICT**

JOB NO: NMI-100
TRACT NO. NMC-027

HANCOCK HUNT HIGHWAY SOUTH

EXHIBIT 'F' ABANDONMENT

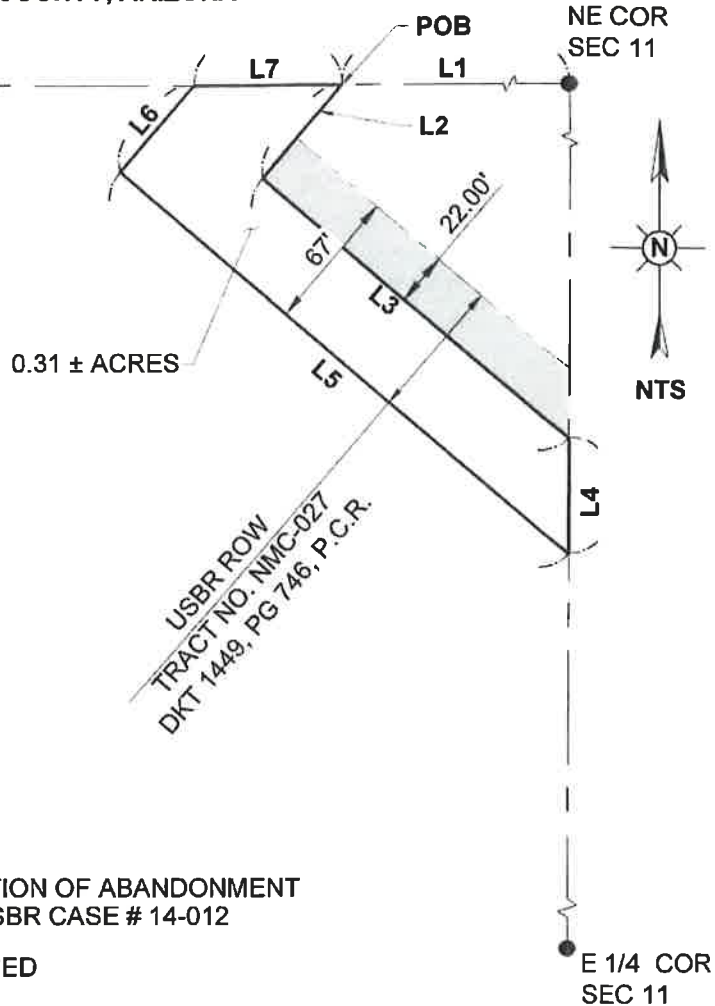
USBR CASE #21-035

1 OF 2

**A PORTION OF THE NORTHEAST QUARTER OF SECTION 11, T3S, R7E, G&SRM
PINAL COUNTY, ARIZONA**

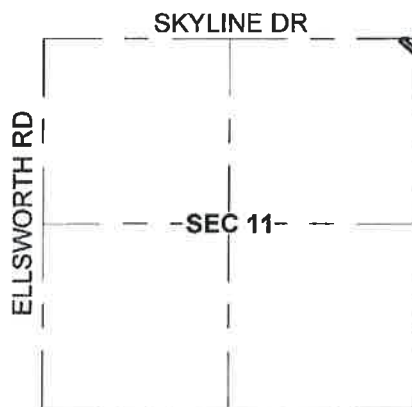
N 1/4 COR
SEC 11

LINE TABLE		
LINE	BEARING	DISTANCE
L1	S89°31'36"W	106.12'
L2	S40°37'41"W	55.00'
L3	S49°22'19"E	187.62'
L4	S00°09'49"E	59.44'
L5	N49°22'19"W	280.03'
L6	N40°37'41"E	53.26'
L7	N89°31'36"E	71.10'



LEGEND

- USBR ROW
- ABANDONED PER AFFIRMATION OF ABANDONMENT
FEE NO. 2015-061995 PER USBR CASE # 14-012
- USBR ROW TO BE ABANDONED



SCALE: 2" = 1 MILE



GCE inc
GEORGE CAIRO ENGINEERING, INC.
 1630 S. STAPLEY DR., SUITE 117
 MESA, ARIZONA 85204
 (480) 921 - 4080
 www.gcairoinc.com

**NEW MAGMA IRRIGATION &
DRAINAGE DISTRICT**

JOB NO: NMI-100
 TRACT NO. NMC-027

HANCOCK HUNT HIGHWAY SOUTH

EXHIBIT 'F' ABANDONMENT

USBR CASE #21-035

2 OF 2

When Recorded Return To:
Shelton Van Allen
New Magma Irrigation and Drainage District
34630 N. Schnepf Road
San Tan Valley, AZ 85140

CONSENT TO ABANDONMENT OF IRRIGATION DISTRIBUTION SYSTEM AND
WAIVER OF RECEIPT OF AGRICULTURAL IRRIGATION WATER SERVICE
TRACT #: NMC-026, NMC-027, NMC-003, and NMC-007-SL

WHEREAS, the undersigned are owners of a portion of the real property described on Exhibits A-F, attached hereto and made a part hereof ("Real Property"), which Real Property is within the boundaries of New Magma Irrigation & Drainage District, an Arizona irrigation district ("District"), and have agricultural irrigation water rights through the irrigation distribution systems owned by the United States of America and operated and maintained by the District; and

WHEREAS, the undersigned has developed the Real Property for other than commercial agricultural purposes and therefore has no need to receive agricultural irrigation water service from the District in the future; and

WHEREAS, the undersigned have no need for the irrigation distribution system appurtenances which are located on the lands described in Exhibits A-F, attached hereto and made a part hereof, which are part of the District's irrigation distribution system; and.

WHEREAS, the undersigned does not intend, nor should this Waiver be construed to constitute, an abandonment or forfeiture of any water right appurtenant to or associated with Real Property.

NOW THEREFORE, the undersigned requests the District consent to the abandonment of the irrigation distribution system appurtenances, including the buried pipe located in the lands described in Exhibits A-F. The undersigned do hereby waive any and all rights that the lands described in Exhibits A-F have to receive agricultural irrigation water services from the District effective immediately, and continuing thereafter, such waiver being binding on heirs, personal representatives, successors, and assigns of each of the undersigned. The undersigned further agree to indemnify and hold harmless the United States, its employees, agents, successors and assigns from any loss or damage and from any liability on account of personal injury, property damage, or claims for personal injury or death arising out of the abandonment of the irrigation distribution system appurtenances, including the abandonment in place of pipe. Provided, however, that nothing contained in this clause shall be deemed to modify or limit any liability which may be imposed by the Federal Tort Claims Act, 28 U.S.C. § 2617, et seq. (1970).

Owner Signature Block

By: _____

Its: _____

State of Arizona)
County of Maricopa) ss.

The foregoing instrument was acknowledged before me this ____ day of _____ 2024 by _____, as _____ of _____

Notary Public

My Commission Expires