

BOARD OF SUPERVISORS



PINAL COUNTY
WIDE OPEN OPPORTUNITY

CSR-001-24

7/3/2024

Community Development Department

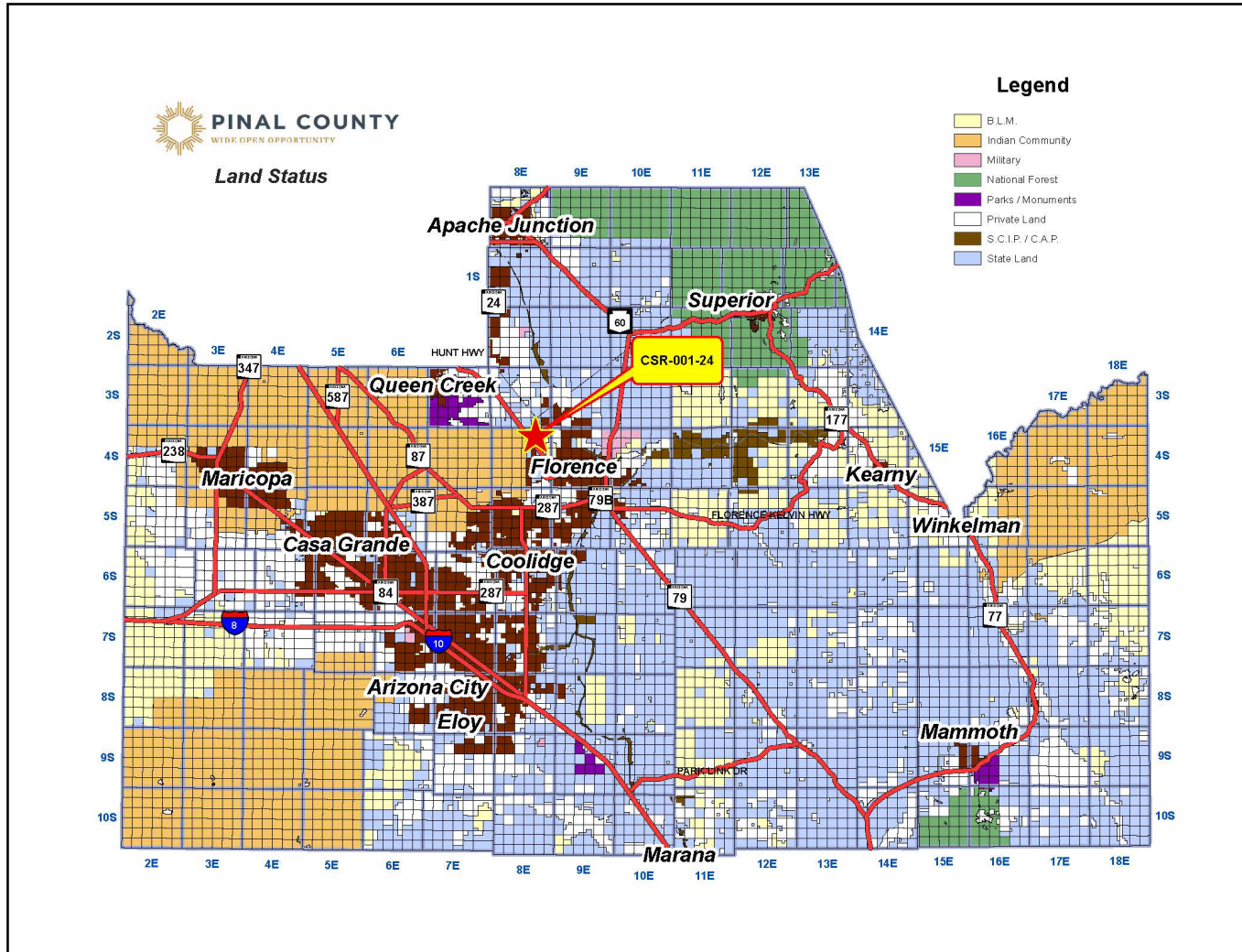
- Proposal:
 - ▣ Victory Lutheran Church, Owner, and Amanda Lauridsen, Precise Sign Co., applicant/agent, requesting approval of a Comprehensive Sign Package to allow one monument sign cabinet with an Electronic Message Board Sign with a total sign area of 62.5 square feet, for Victory Lutheran Church on a 19.61 ± acre parcel in the CB-1 Local Business Zone;
 - ▣ **Parcel Number:** 200-58-002C
 - ▣ **Location:** The subject site is located at 6173 E Arizona Farms Rd, in Florence, directly east of the intersection of E Hunt Highway and E Arizona Farms Rd.
 - ▣ **Landowner:** Victory Lutheran Church.
 - ▣ **Agent:** Precise Sign Co.- Amanda Lauridsen

County Map



PINAL COUNTY

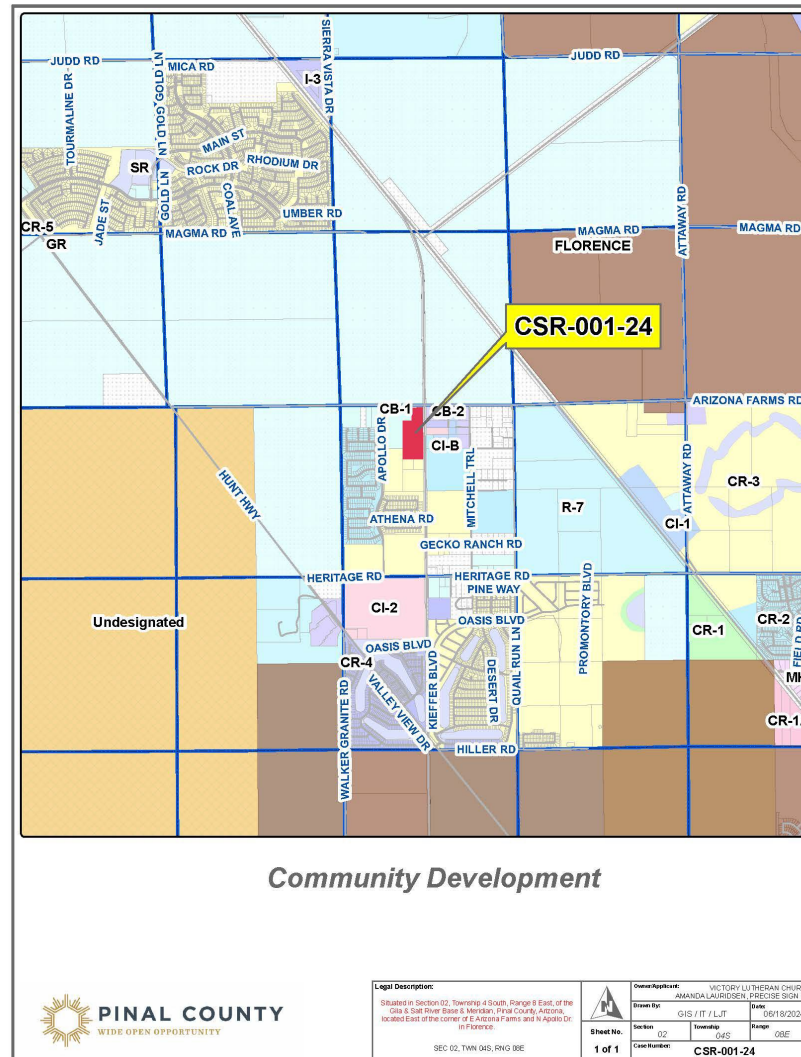
WIDE OPEN OPPORTUNITY



Vicinity Map



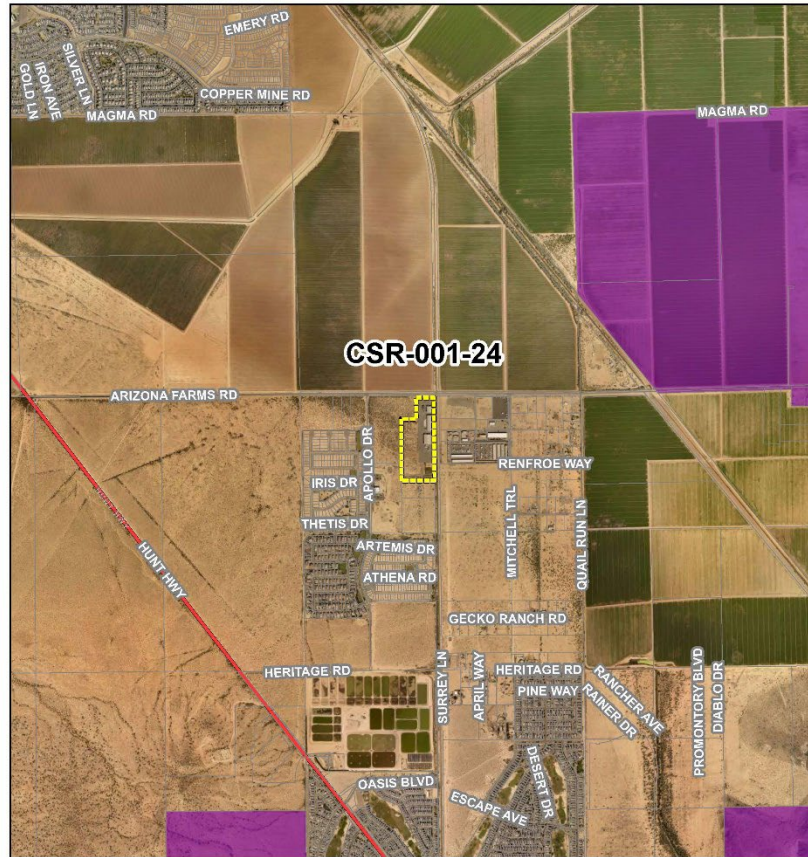
PINAL COUNTY
WIDE OPEN OPPORTUNITY



Aerial Map



PINAL COUNTY
WIDE OPEN OPPORTUNITY



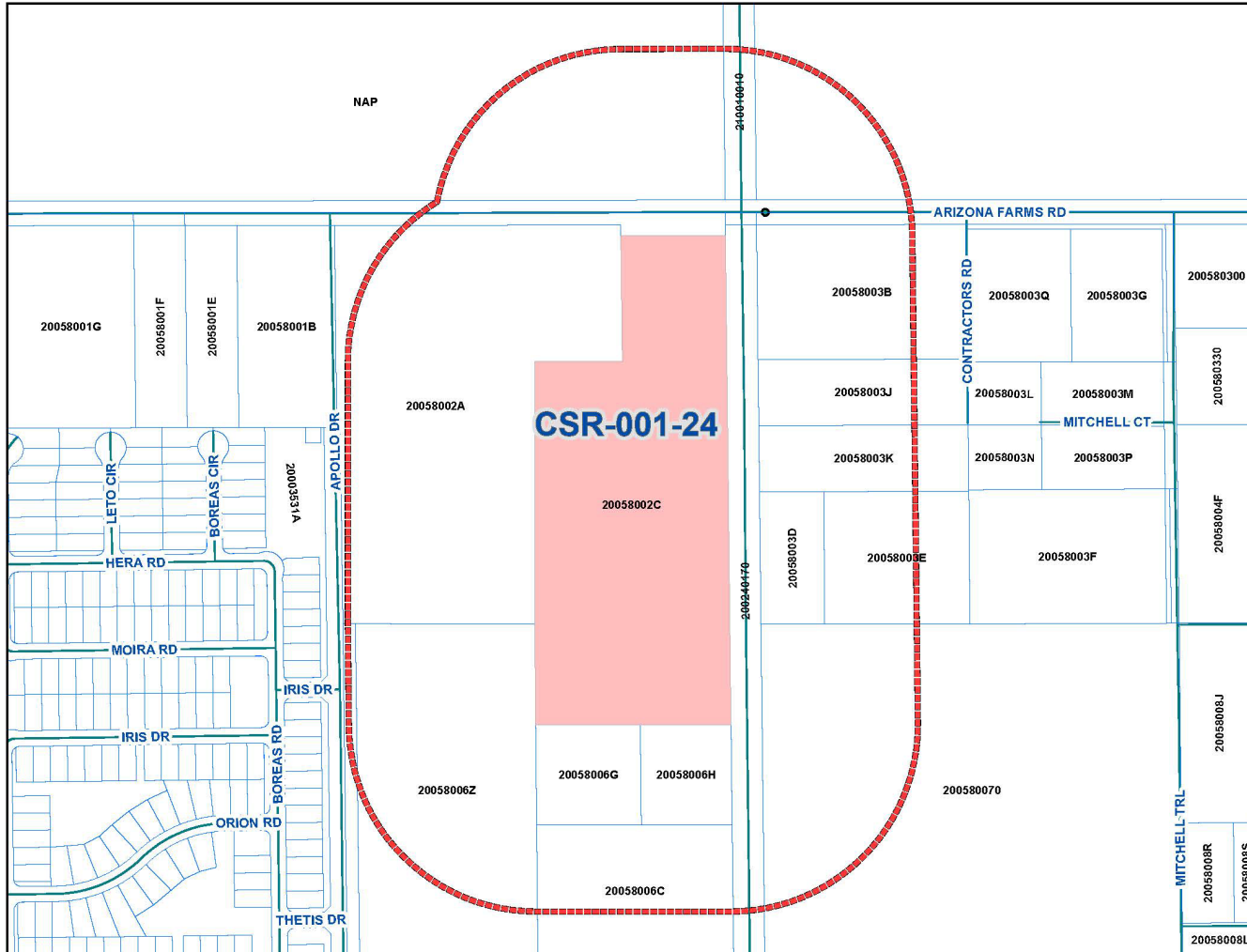
Community Development

Area Map



PINAL COUNTY

WIDE OPEN OPPORTUNITY



Christ the Victor Church Existing Signage – Proposed Signage



PINAL COUNTY
WIDE OPEN OPPORTUNITY



Removing
Existing Sign
& Reusing Pipe
Foundation
13' Tall x 9' Wide
Square Feet 64.



Existing Signage - East



PINAL COUNTY
WIDE OPEN OPPORTUNITY



North



PINAL COUNTY

WIDE OPEN OPPORTUNITY

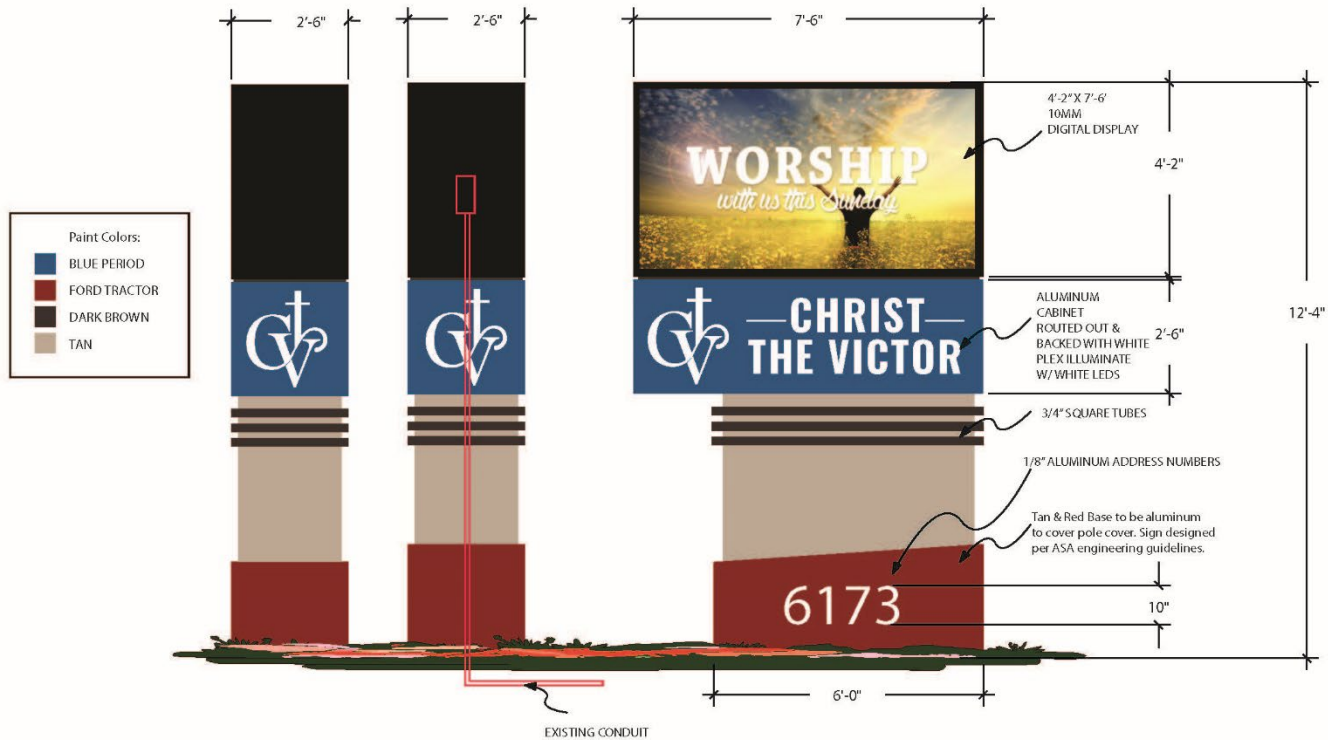


Proposed Changes



PINAL COUNTY
WIDE OPEN OPPORTUNITY

Total Square Feet: 62.5 square feet
Existing Sign We Are Replacing: 64 square feet



107 S 57th Drive
phoenix, arizona 85014
602.278.2906
fax: 602.278.2523
email: amanda@precisesign.com

FONT SELECTION: Customer Custom Layout

This is an original unpublished drawing submitted solely for the project being planned. It is not to be reproduced in any manner or shown to persons outside your organization without the express written authorization of Precise Sign Company.

CUSTOMER:
LANDLORD:

PROJECT: Christ the Victor
Florence, AZ

Date: 12.18.23
Revisions:

DESIGN NO. 12.18.23.1

SHEET NUMBER .03

Items for Board Consideration:

- ❑ Electronic Message Board signs are not currently permitted under the Pinal County Sign Code without Board Approval.
- ❑ The Sign Review Committee met regarding this case. The SRC **recommended approval (4-0)**
- ❑ The Community Development Director recommended Approval with the inclusion of four additional stipulations.
- ❑ The county has received no public comment on the proposed signage.

Staff recommends Board of Supervisors Approve this case with following stipulations.

- **CSR-001-24, Four (4) Stipulations.**

▣ Approval with:

CSR-001-24 (4 stipulations)

- ▣ 1. The sign's minimum display time shall not change more than once every eight (8) seconds.
- ▣ 2. Illumination levels: Electronic Message Displays shall incorporate photocell/ light sensors with automatic dimming technology to adjust display brightness in accordance with ambient light conditions. Displays shall have a brightness level of no greater than 0.3 foot candles above ambient light conditions at any property line.
- ▣ 3. Maintenance: Any allowed Electronic Message Display that malfunctions or is damaged shall be repaired or disconnected within twenty-four (24) hours by the owner or operator of the sign.
- ▣ 4. The sign shall be deactivated between the hours of 8p.m. to 7a.m. Mountain Standard Time.