



Apr 12, 2024 10:23:00am C:\Users\agross\appdata\local\temp\AcPublish\_L7660\21-0126 Ph 4 Plat.dwg agross

LOT AREA TABLE		
LOT #	AREA (SF)	AREA (AC)
1	5,337	0.1225
2	5,400	0.1240
3	5,400	0.1240
4	5,400	0.1240
5	5,400	0.1240
6	5,400	0.1240
7	5,400	0.1240
8	5,400	0.1240
9	5,400	0.1240
10	5,400	0.1240
11	5,397	0.1239
12	7,393	0.1697
13	10,589	0.2431
14	9,663	0.2218
15	6,026	0.1383
16	6,055	0.1390
17	6,062	0.1392
18	5,620	0.1290
19	5,627	0.1292
20	6,085	0.1397
21	6,092	0.1399
22	6,099	0.1400
23	5,657	0.1299
24	5,664	0.1300
25	6,122	0.1405
26	6,129	0.1407
27	6,116	0.1404
28	10,310	0.2367
29	11,527	0.2646
30	7,119	0.1634
31	5,419	0.1244
32	5,433	0.1247
33	5,175	0.1188
34	5,175	0.1188
35	5,175	0.1188
36	5,175	0.1188
37	5,175	0.1188
38	5,175	0.1188
39	5,175	0.1188
40	5,175	0.1188
41	5,175	0.1188
42	5,175	0.1188
43	5,175	0.1188

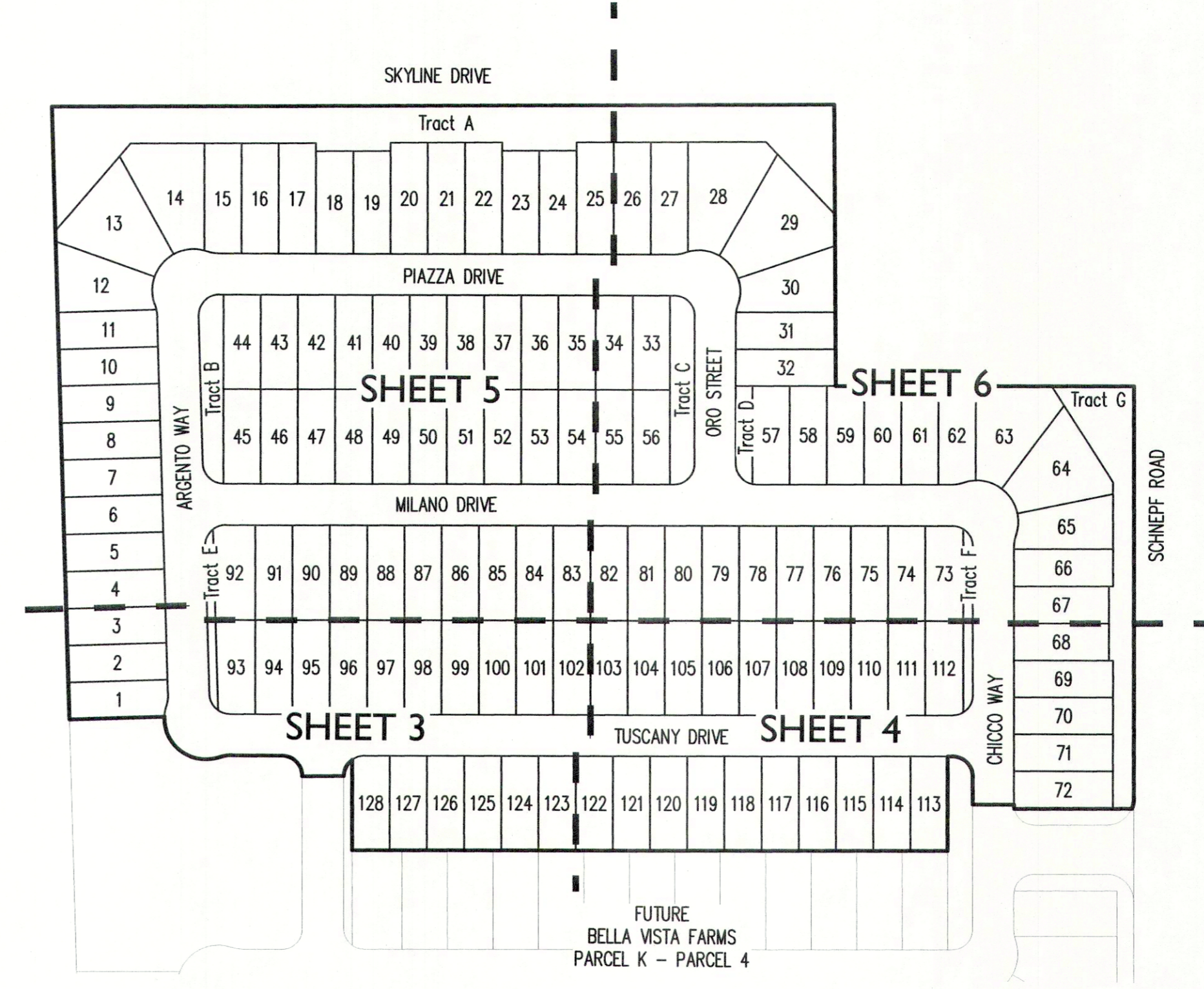
LOT AREA TABLE		
LOT #	AREA (SF)	AREA (AC)
44	5,175	0.1188
45	5,175	0.1188
46	5,175	0.1188
47	5,175	0.1188
48	5,175	0.1188
49	5,175	0.1188
50	5,175	0.1188
51	5,175	0.1188
52	5,175	0.1188
53	5,175	0.1188
54	5,175	0.1188
55	5,175	0.1188
56	5,175	0.1188
57	5,399	0.1239
58	5,400	0.1240
59	5,400	0.1240
60	5,400	0.1240
61	5,400	0.1240
62	5,330	0.1223
63	9,147	0.2100
64	9,402	0.2158
65	6,393	0.1468
66	5,400	0.1240
67	5,175	0.1188
68	5,175	0.1188
69	5,400	0.1240
70	5,400	0.1240
71	5,400	0.1240
72	5,466	0.1255
73	5,272	0.1210
74	5,175	0.1188
75	5,175	0.1188
76	5,175	0.1188
77	5,175	0.1188
78	5,175	0.1188
79	5,175	0.1188
80	5,175	0.1188
81	5,175	0.1188
82	5,175	0.1188
83	5,175	0.1188
84	5,175	0.1188
85	5,175	0.1188
86	5,175	0.1188

LOT AREA TABLE		
LOT #	AREA (SF)	AREA (AC)
87	5,175	0.1188
88	5,175	0.1188
89	5,175	0.1188
90	5,175	0.1188
91	5,175	0.1188
92	5,722	0.1314
93	5,346	0.1227
94	5,175	0.1188
95	5,175	0.1188
96	5,175	0.1188
97	5,175	0.1188
98	5,175	0.1188
99	5,175	0.1188
100	5,175	0.1188
101	5,175	0.1188
102	5,175	0.1188
103	5,175	0.1188
104	5,175	0.1188
105	5,175	0.1188
106	5,175	0.1188
107	5,175	0.1188
108	5,175	0.1188
109	5,175	0.1188
110	5,175	0.1188
111	5,175	0.1188
112	5,272	0.1210
113	5,175	0.1188
114	5,175	0.1188
115	5,175	0.1188
116	5,175	0.1188
117	5,175	0.1188
118	5,175	0.1188
119	5,175	0.1188
120	5,175	0.1188
121	5,175	0.1188
122	5,175	0.1188
123	5,175	0.1188
124	5,175	0.1188
125	5,175	0.1188
126	5,175	0.1188
127	5,175	0.1188
128	5,209	0.1196

CURVE TABLE						
CURVE	LENGTH	RADIUS	DELTA	CHORD	CHORD BRG	
C1	13.36'	33.00'	23°11'59"	13.27'	S11°10'09"W	
C2	5.03'	25.00'	11°32'13"	5.03'	N06°11'57"W	
C3	39.27'	25.00'	90°00'00"	35.36'	N45°25'51"W	
C4	23.18'	25.00'	53°07'48"	22.36'	S26°08'03"W	
C5	39.27'	25.00'	90°00'00"	35.36'	N45°25'51"W	
C6	15.88'	50.00'	18°11'42"	15.81'	S80°28'18"W	
C7	96.10'	50.00'	110°07'34"	81.98'	N53°33'45"W	
C8	12.74'	50.00'	14°36'15"	12.71'	S08°48'10"W	
C9	15.88'	50.00'	18°11'42"	15.81'	N07°00'27"E	
C10	16.09'	25.00'	36°52'12"	15.81'	S71°08'03"W	
C11	38.55'	25.00'	88°20'27"	34.84'	S46°15'38"E	
C12	39.27'	25.00'	90°00'00"	35.36'	N44°34'09"E	
C13	15.88'	50.00'	18°11'42"	15.81'	S08°40'00"W	
C14	15.88'	50.00'	18°11'42"	15.81'	N80°28'18"E	
C15	110.30'	50.00'	126°23'23"	89.25'	N45°25'51"W	
C16	39.27'	25.00'	90°00'00"	35.36'	N45°25'51"W	
C17	39.27'	25.00'	90°00'00"	35.36'	S45°25'51"E	
C18	39.27'	25.00'	90°00'00"	35.36'	N44°34'09"E	
C19	38.55'	25.00'	88°20'27"	34.84'	S46°15'38"E	
C20	39.99'	25.00'	91°39'33"	35.86'	S43°44'22"W	
C21	39.99'	25.00'	91°39'33"	35.86'	S43°44'22"W	
C22	15.88'	50.00'	18°11'42"	15.81'	S81°20'00"E	
C23	15.88'	50.00'	18°11'42"	15.81'	N11°11'15"W	
C24	111.74'	50.00'	128°02'56"	89.90'	S43°44'22"W	
C25	39.27'	25.00'	90°00'00"	35.36'	N45°25'51"W	
C26	15.88'	50.00'	18°11'42"	15.81'	N80°28'18"E	
C27	15.88'	50.00'	18°11'42"	15.81'	S08°40'00"W	
C28	110.30'	50.00'	126°23'23"	89.25'	N45°25'51"W	

TRACT USE TABLE			
TRACT	USE	AREA (SF)	AREA (AC)
Tract A	LANDSCAPE, OPEN SPACE, PUBLIC UTILITY EASEMENT AND RETENTION	52,994	1.2166
Tract B	LANDSCAPE, OPEN SPACE, AND PUBLIC UTILITY EASEMENT	6,083	0.1397
Tract C	LANDSCAPE, OPEN SPACE, AND PUBLIC UTILITY EASEMENT	6,589	0.1513
Tract D	LANDSCAPE, OPEN SPACE, AND PUBLIC UTILITY EASEMENT	2,267	0.0520
Tract E	LANDSCAPE, OPEN SPACE, AND PUBLIC UTILITY EASEMENT	2,080	0.0478
Tract F	LANDSCAPE, OPEN SPACE, AND PUBLIC UTILITY EASEMENT	2,394	0.0550
Tract G	LANDSCAPE, OPEN SPACE, AND PUBLIC UTILITY EASEMENT	17,624	0.4046

LINE TABLE		
LINE	BEARING	LENGTH
L1	S89°34'09"W	50.00'
L2	N00°25'51"W	33.40'
L3	S89°34'09"W	5.00'
L4	N00°25'51"W	110.00'
L5	S89°34'09"W	50.00'
L6	S89°34'09"W	60.56'



1130 N. Alma School Rd, Suite 120  
Mesa, AZ 85201  
T: 480.503.2350 | F: 480.835.1799  
www.epsgroup.com

Bella Vista Farms - Parcel K - Parcel 4  
PINAL COUNTY, ARIZONA

FINAL PLAT

Project:

Revisions:

Call at least ten full working days before you begin work.

ARIZONA  
STATE BOARD OF REGISTRATION  
Professional Engineer License No. 10000

Drawn by: A.G.

Reviewed by: M.P.

Job No.

21-0126

FP02

Sheet No.

2

of 6





NORTH QUARTER CORNER  
SECTION 9, T3S, R8E  
FOUND 1" IRON PIPE  
W/TAG RLS 43994

