



U.S. Department of the Interior
Bureau of Land Management

Business Plan

BLM Phoenix District Recreational Shooting Sites





Lower Sonoran Field Office Shooting Sport Site Locations



3/13/2024

1:831,057

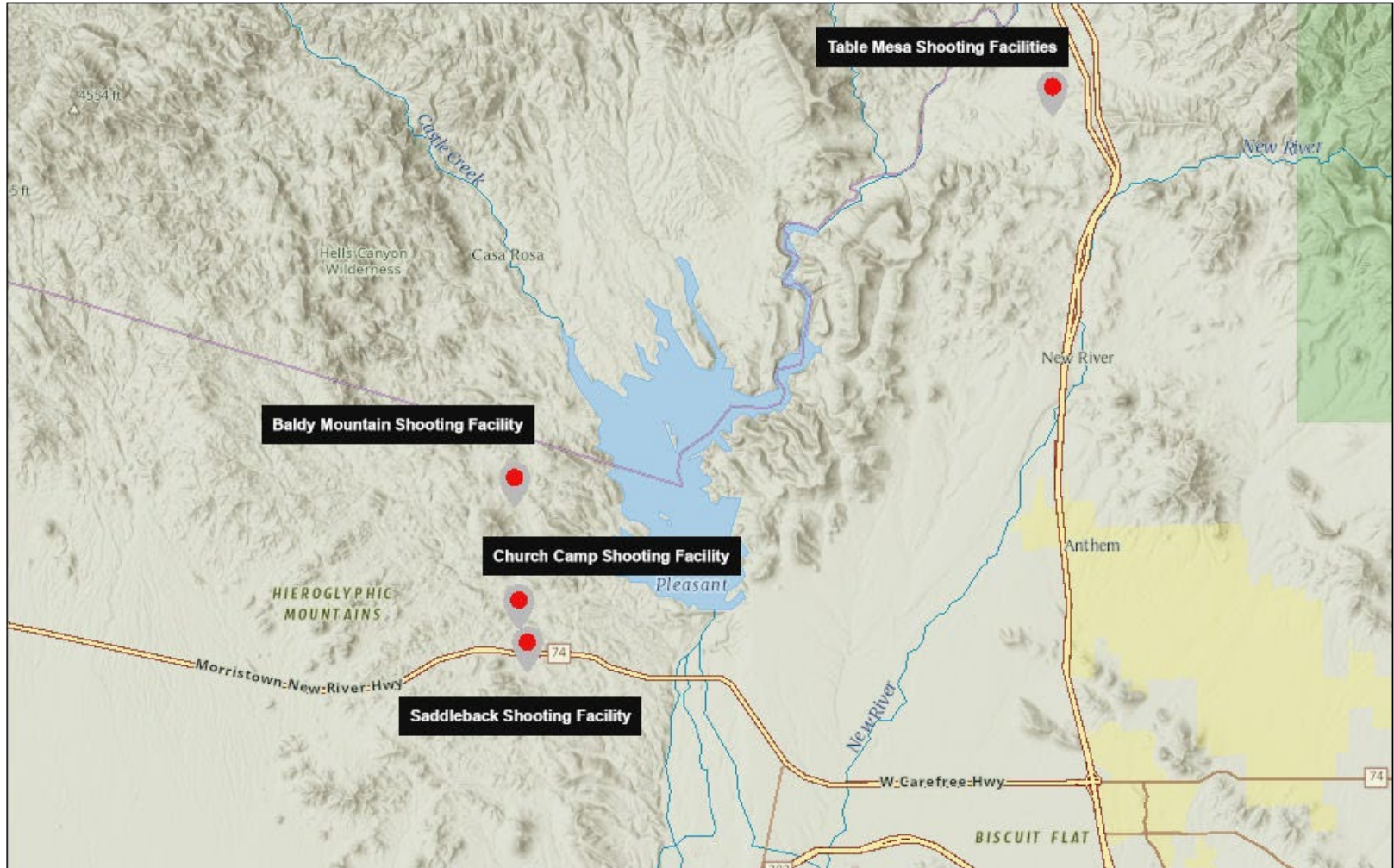
0 5 10 20 mi

0 5 10 20 km

City of Goodyear, Esri, TomTom, Garmin, SafeGraph, FAO, MET/INASA, USGS, Bureau of Land Management, EPA, NPS, USFWS, Esri, CGIAR.



Hassayampa Field Office Shooting Sport Site Locations



3/12/2024

1:207,764
0 1.5 3 6 mi
0 2.25 4.5 9 km
Esri, NASA, NGA, USGS, Sources: Esri, USGS, City of Phoenix, County of Yavapai, Esri, TomTom, Garmin, SafeGraph, METI/NASA, USGS, Bureau of



The sites have been very popular with the recreating public.

Visitor Use, fiscal year 2023

Pinal County

- **Box Canyon:** 2,774 (opened Sept. 2023)

Maricopa County

- **Baldy Mountain:** 5,021 (opened Feb. 2023)
- **Church Camp Road:** 47,811 (opened Oct. 2022)
- **Saddleback Mountain:** 16,330 (opened Oct. 2022)

- Total 71,936



Operating Costs

- Commercial trash pickup
- Target manufacture and replacement
- Toilet cleaning/pumping
- Staff patrols, support
- Berm, backstop, parking repair
- Equipment rental
- Facility maintenance
- Lead remediation





A business plan was released this week.

- Proposes new recreation fees for current and future recreational shooting sites.
- Projected revenue will be used to offset site operation and maintenance expenses, enhance amenities and help supplement construction costs of new sites.
- One hundred percent of recreation fees collected at sites are reinvested directly back into the local recreation program to expand and improve recreational opportunities.





Proposed Permit Fees

- \$10 per day
- \$25 per month
- \$80 per year

Permit would be required for users aged 17 and older.



Business plans are available for a 30-day comment period.

Plans are posted on our website:

[https://www.blm.gov/programs/recreation/permits-and-fees/
business-plans](https://www.blm.gov/programs/recreation/permits-and-fees/business-plans)

