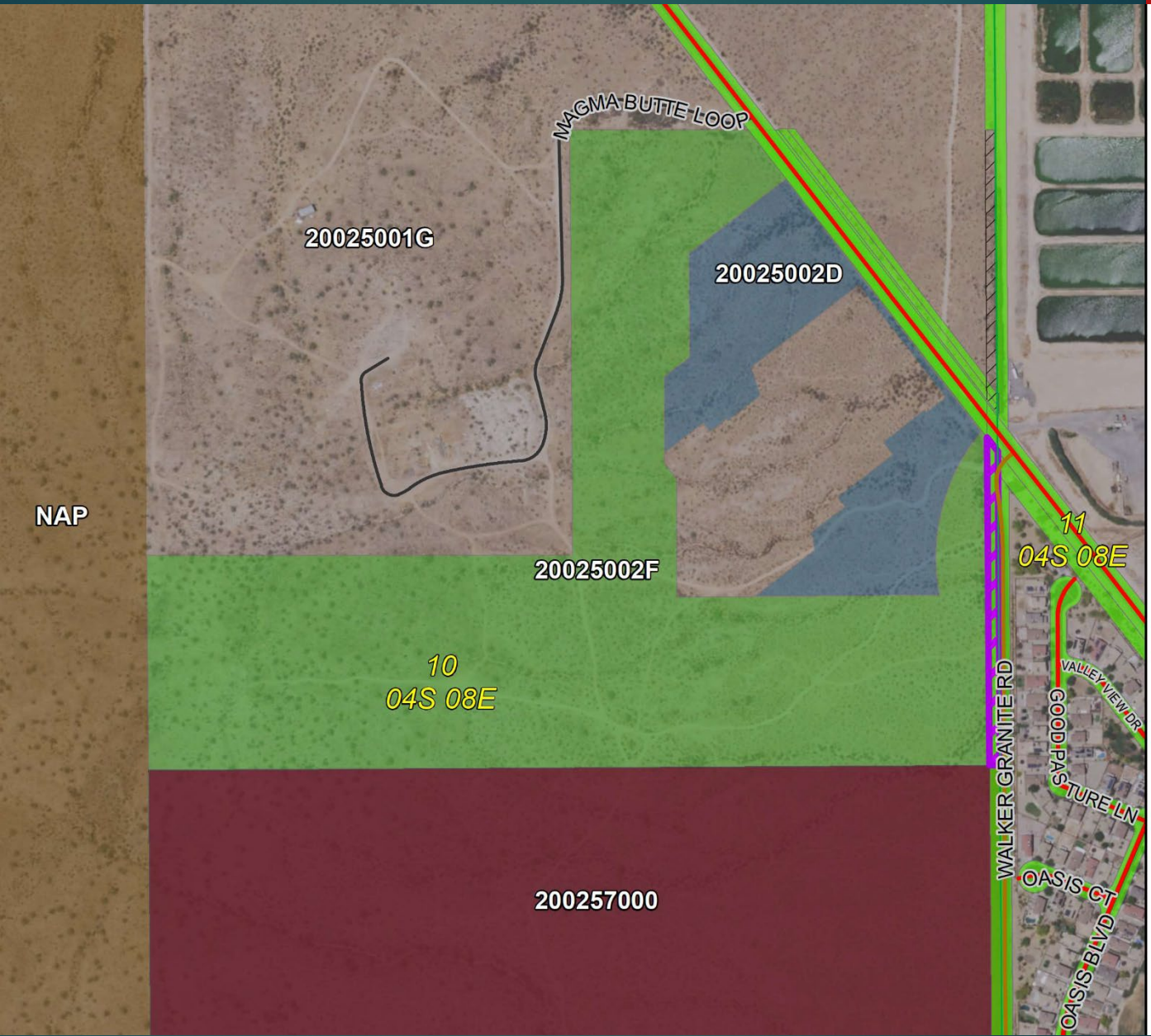


Walker Granite Road (33')

South of Hunt Highway

- ▶ San Tan Valley Area – Section 10, T04S R08E
- ▶ Tim Keenan, Lookout Mountain Partners LLC
Parcel No. 200-25-002F
 - ▶ Consideration for new development the Lookout Mountain Parcels A & B
 - ▶ Final Plat is before the BOS this Winter.
- ▶ Staff reasons FOR abandonment:
 - ▶ Legal/Physical access to all surrounding parcels will not be compromised by this abandonment (ASLD agrees to the abandonment property to the south).
 - ▶ The Walker Granite Road alignment will be rededicated through a future subdivision plat Lookout Parcel A & B.
 - ▶ All surrounding utilities do not object to abandonment.



PROPOSED ABANDONMENT



ON HUNT HIGHWAY LOOKING EAST



AT HUNT HIGHWAY LOOKING SOUTH



ON WALKER GRANITE LOOKING NORTH



PINAL COUNTY

WIDE OPEN OPPORTUNITY

CELESTE GARZA

DEPUTY DIRECTOR OF PUBLIC WORKS
DEVELOPMENT SERVICES DEPARTMENT

CELESTE.GARZA@PINAL.GOV

520-866-6402

520-705-3539 (C)

Any questions I can answer?