

BOARD OF SUPERVISORS



PINAL COUNTY
WIDE OPEN OPPORTUNITY

SUP-004-23

11/1/23

Community Development Department

SUP-004-23

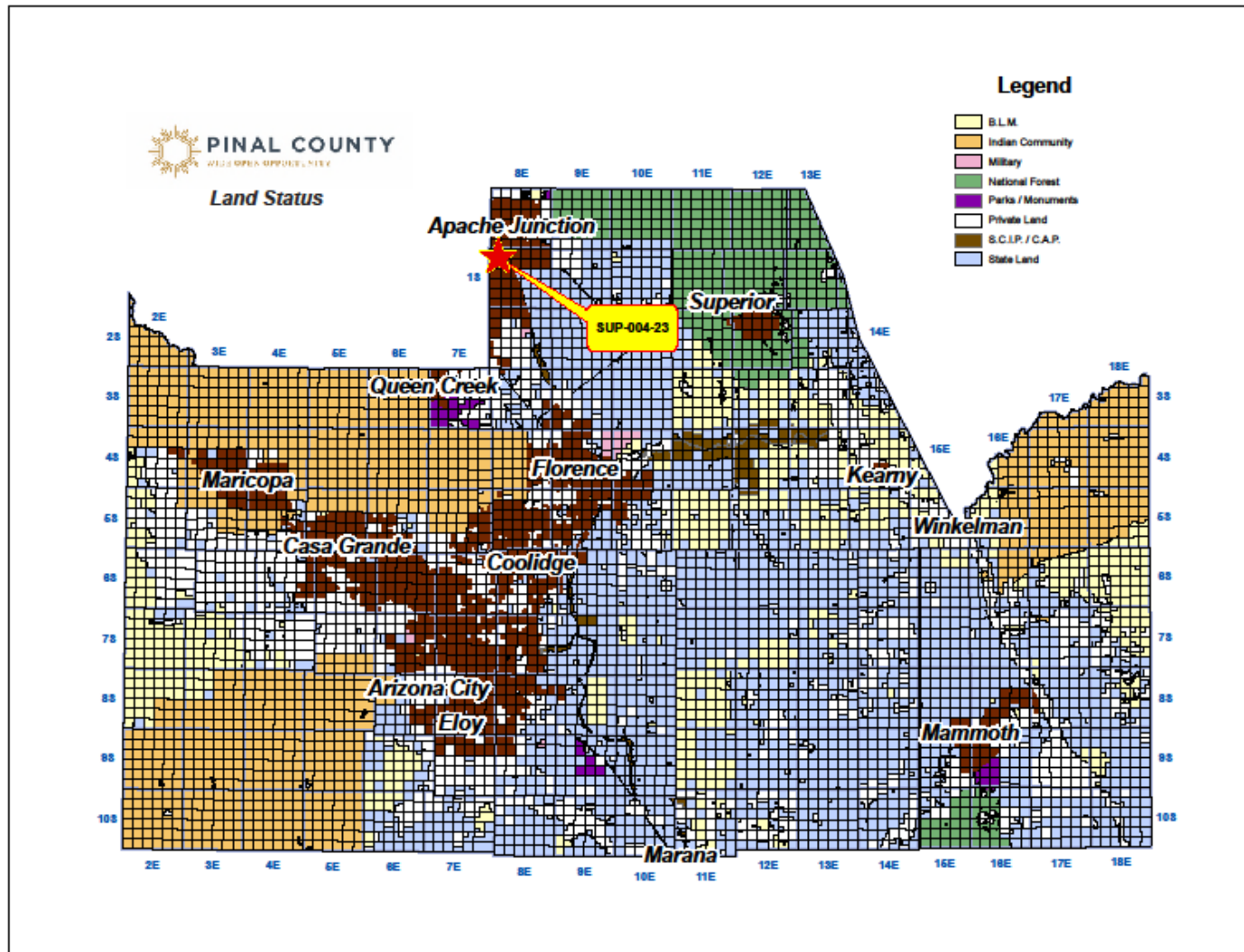
- Proposal:
 - Special Use Permit request to continue to maintain a Wireless Communication Facility.
- Size:
 - 0.53 ± acres
- Location:
 - North of Guadalupe Rd. and west of Ironwood Drive
- Owner/Applicant:
 - SBA 2012 TC Assets, LLC, Owner, Nicole Comach, Applicant

Location Map



PINAL COUNTY

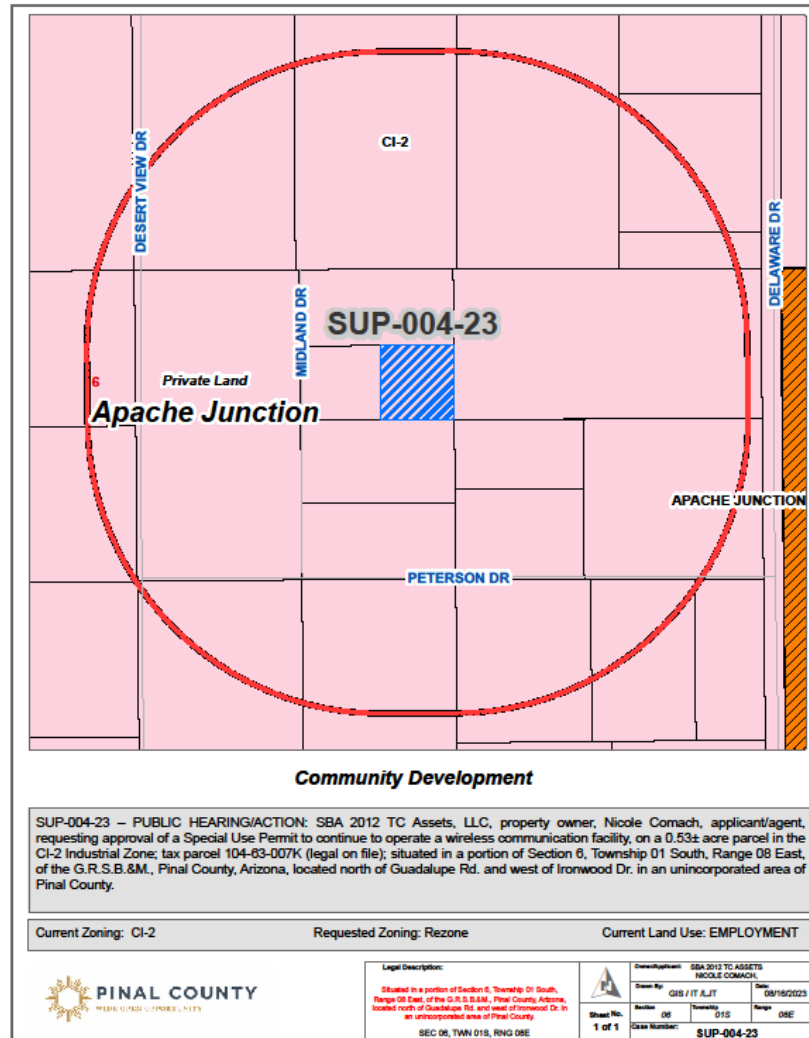
WIDE OPEN OPPORTUNITY



Case/Zoning Map



PINAL COUNTY
WIDE OPEN OPPORTUNITY



Aerial Map



PINAL COUNTY
WIDE OPEN OPPORTUNITY



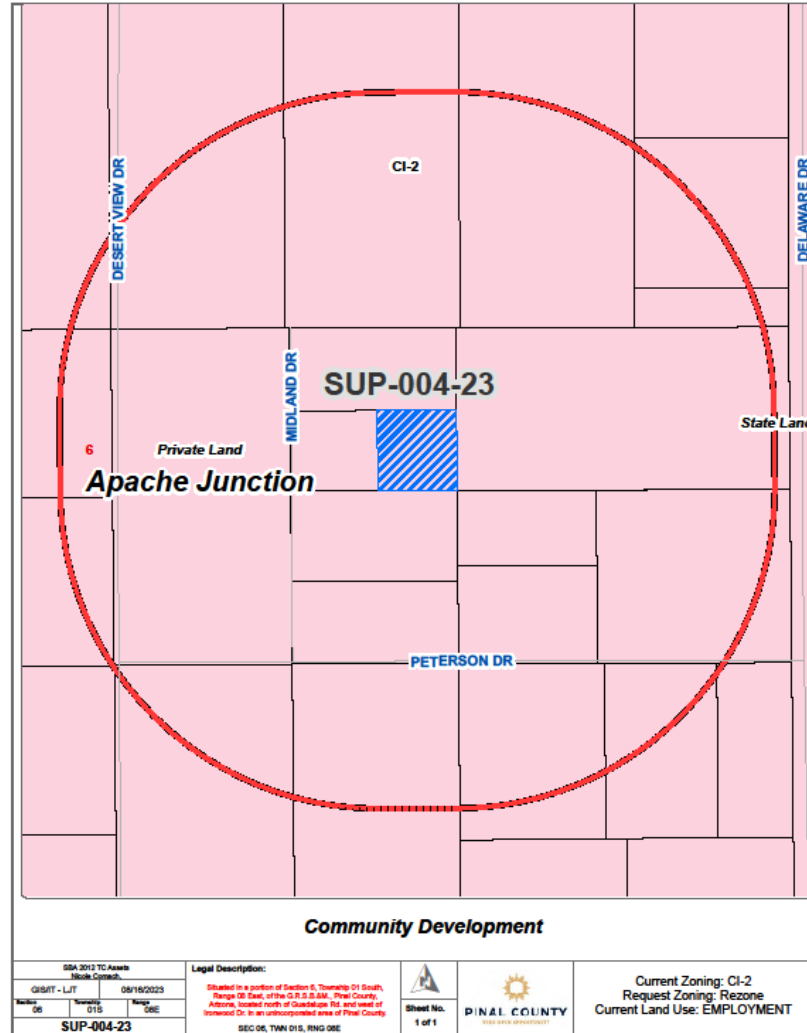
Community Development

Mailout Map



PINAL COUNTY

WIDE OPEN OPPORTUNITY

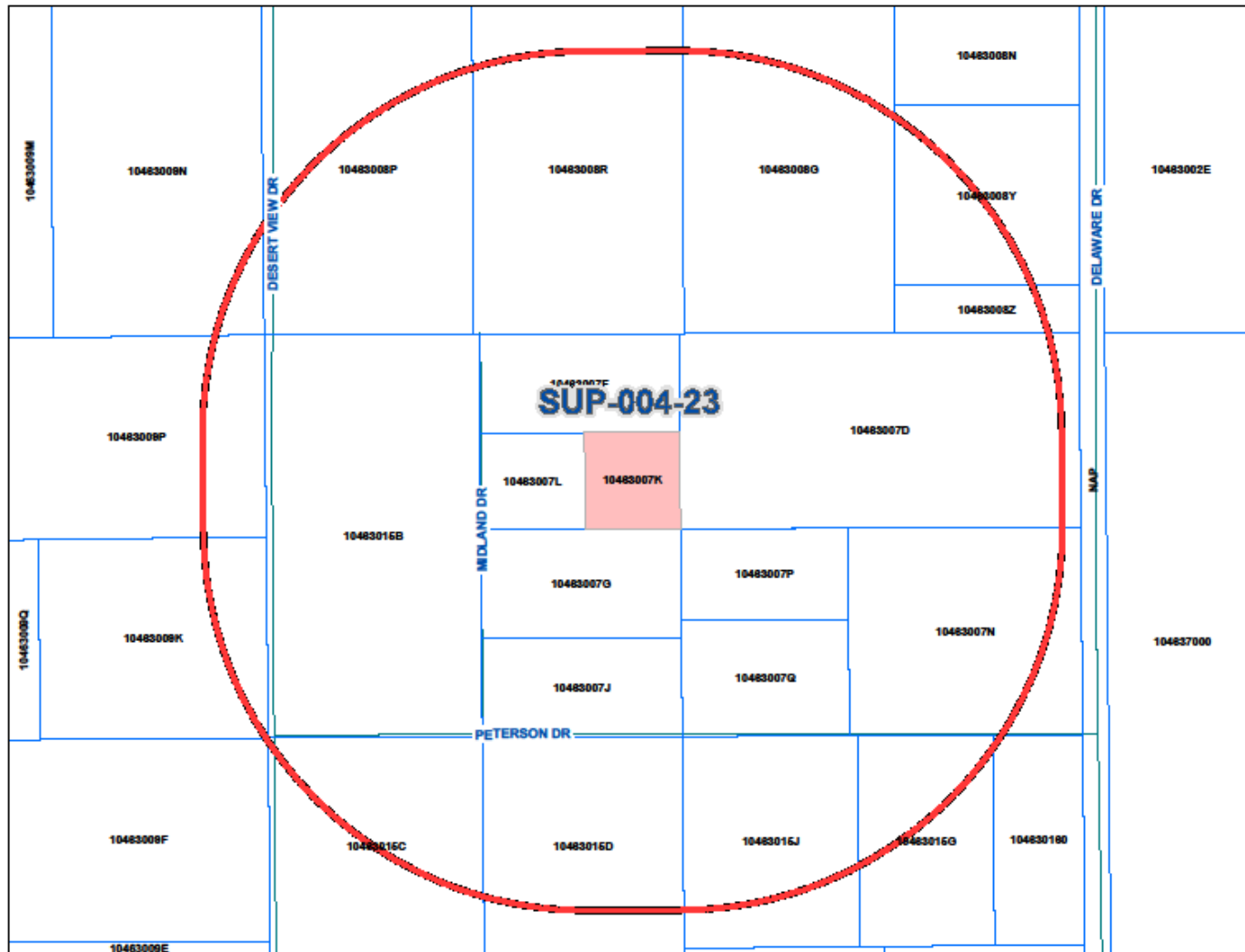


600' Map



PINAL COUNTY

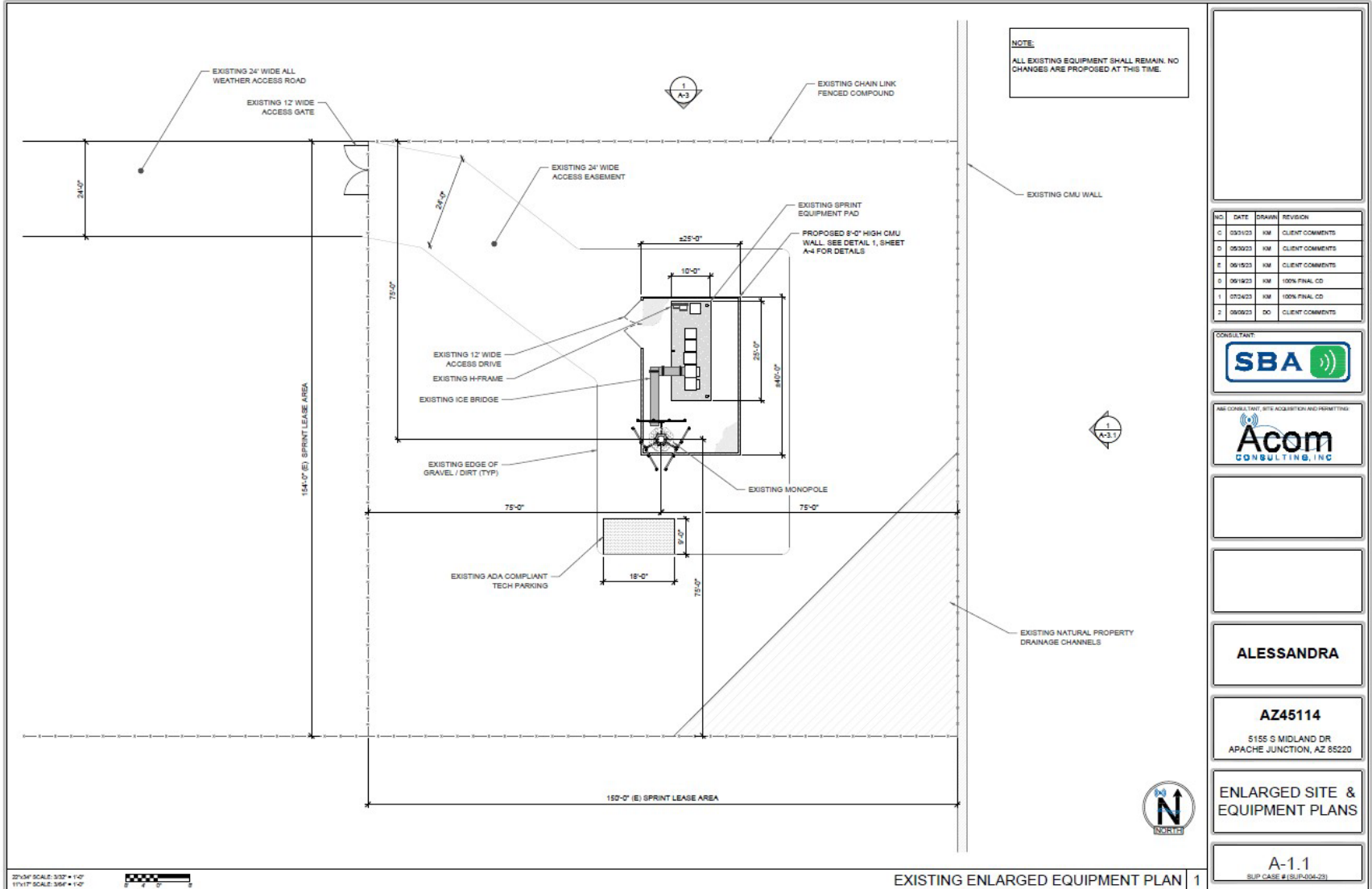
WIDE OPEN OPPORTUNITY



Site Plan



PINAL COUNTY
WIDE OPEN OPPORTUNITY



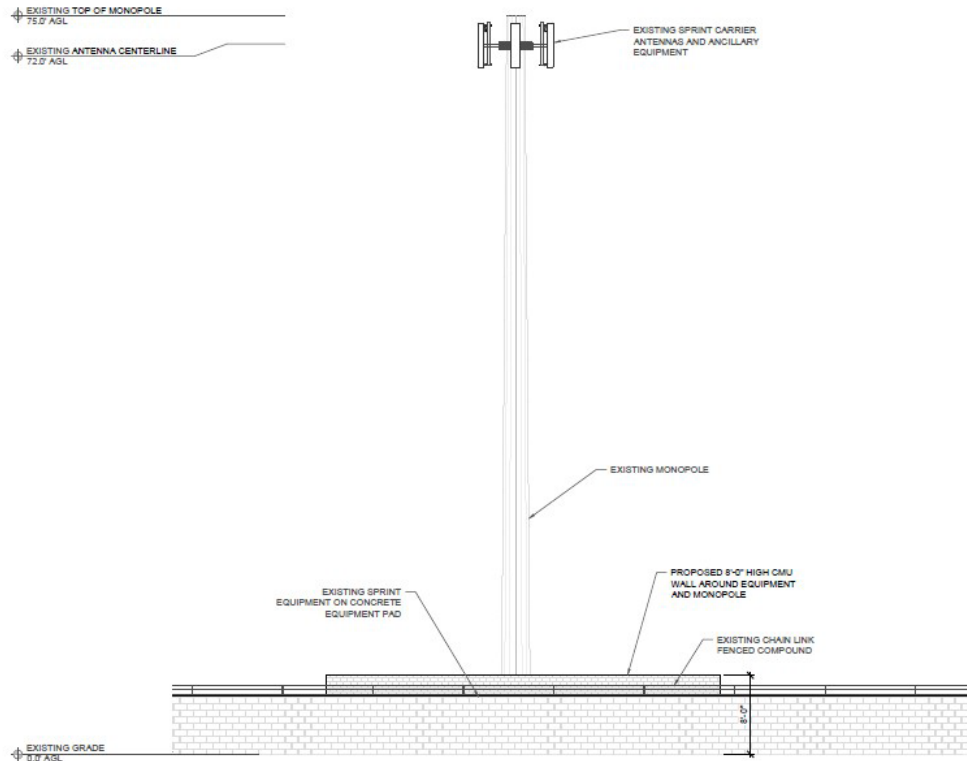
Elevation



PINAL COUNTY

WIDE OPEN OPPORTUNITY

NOTE:
ALL EXISTING EQUIPMENT SHALL REMAIN. NO CHANGES ARE PROPOSED AT THIS TIME.



NO.	DATE	DRAWN	REVISION
C	03/1/21	VM	CLIENT COMMENTS
D	05/20/23	VM	CLIENT COMMENTS
E	06/15/23	VM	CLIENT COMMENTS
G	06/19/23	VM	100% FINAL CD
I	07/24/23	VM	100% FINAL CD
J	08/09/23	DO	CLIENT COMMENTS



ALESSANDRA

AZ45114
5155 S MIDLAND DR
ARAPACHE JUNCTION, AZ 85220

EXISTING
ELEVATIONS

A-3.1
SIP CASE # 19UPJ004-291

North



PINAL COUNTY

WIDE OPEN OPPORTUNITY





Northwest



PINAL COUNTY

WIDE OPEN OPPORTUNITY



South



PINAL COUNTY

WIDE OPEN OPPORTUNITY



Items of Consideration

- Continued coverage needed for the area.
- WCF has existed since original SUP was approved in 2002.
- Traffic Impacts for WCF are minimal, as only occasional maintenance is required.
- No letters of opposition.

SUP-004-23

- Recommendation for Approval:
 - ▣ 17 Stipulations