



PINAL COUNTY
WIDE OPEN OPPORTUNITY

SUP-017-23

11/01/23

Presentation for Pinal County Board of Supervisors
by Community Development Department

SUP-017-23

- **Request:** Vertical Bridge, LLC is seeking approval of a Special Use Permit to allow the construction and operation of a new Wireless Communication Facility.
- **Parcel Information:** 206-06-016M zoned General Rural (GR)
- **Location:** located south of E. Florence-Kelvin Highway and east of N. Hohokam Road; in an unincorporated portion of the Town of Florence
- **Owner/Applicant:** George Nicewander (owner [authorization on file])

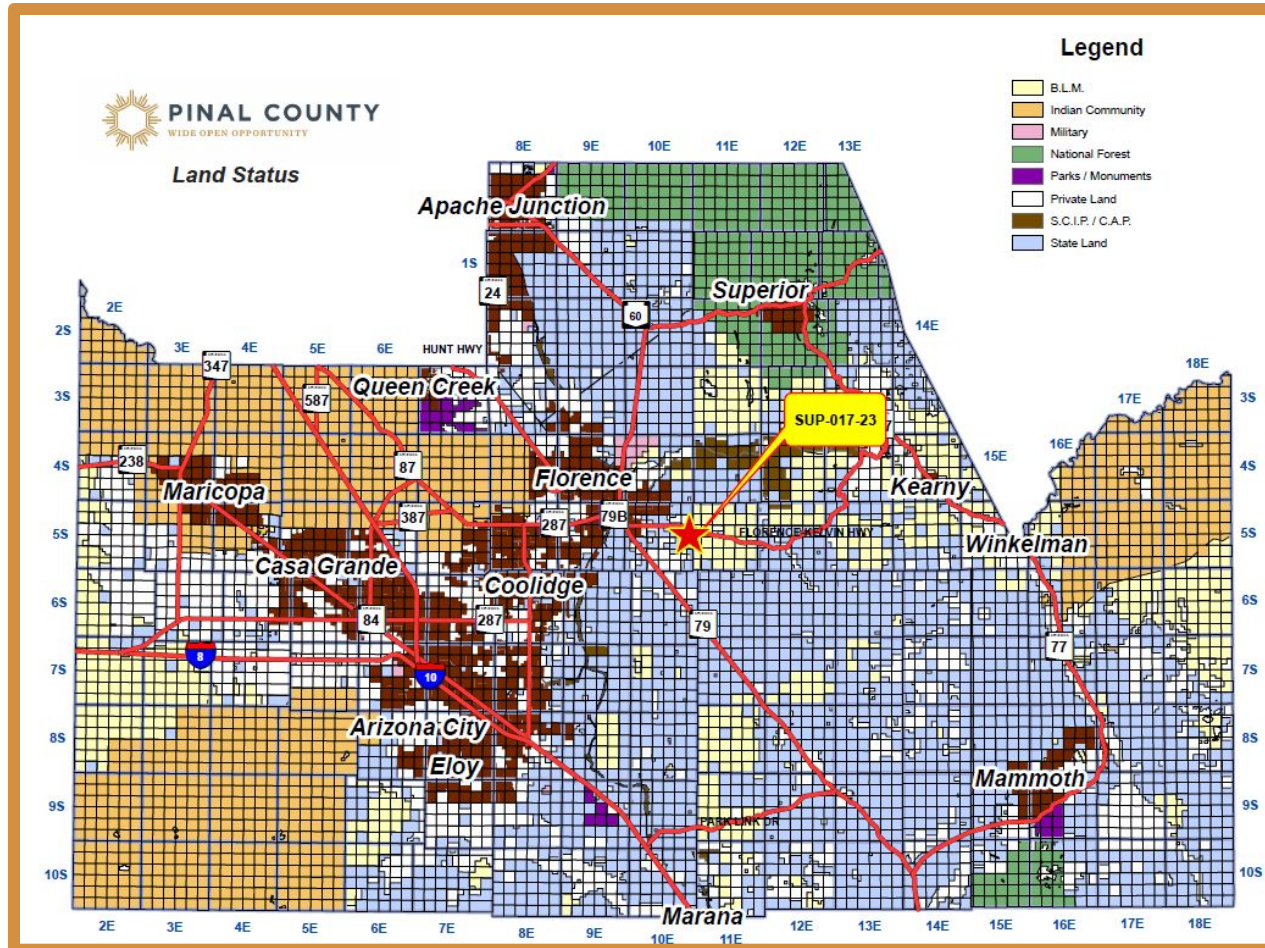
Jim Caciola (applicant/agent for Vertical Bridge, LLC.)

County Map



PINAL COUNTY

WIDE OPEN OPPORTUNITY

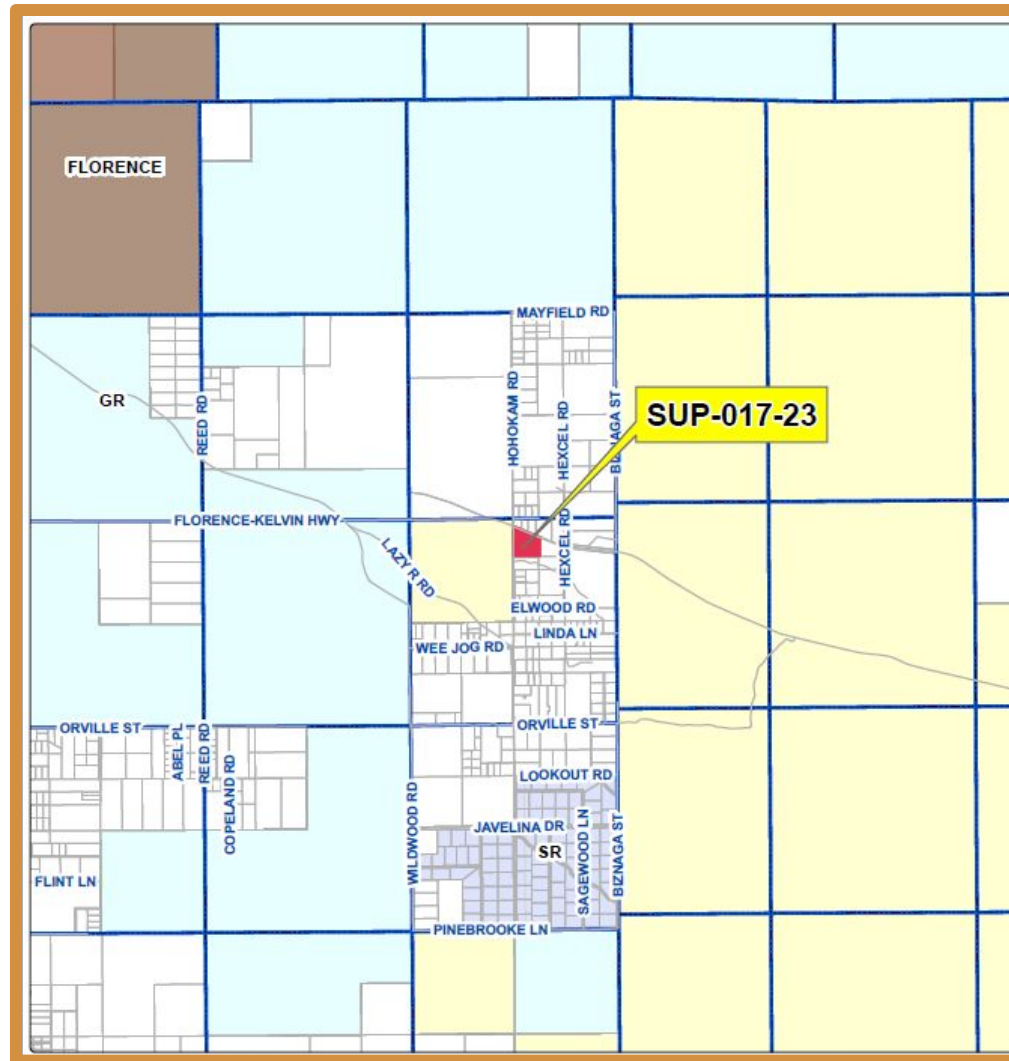


Zoning Context



PINAL COUNTY

WIDE OPEN OPPORTUNITY

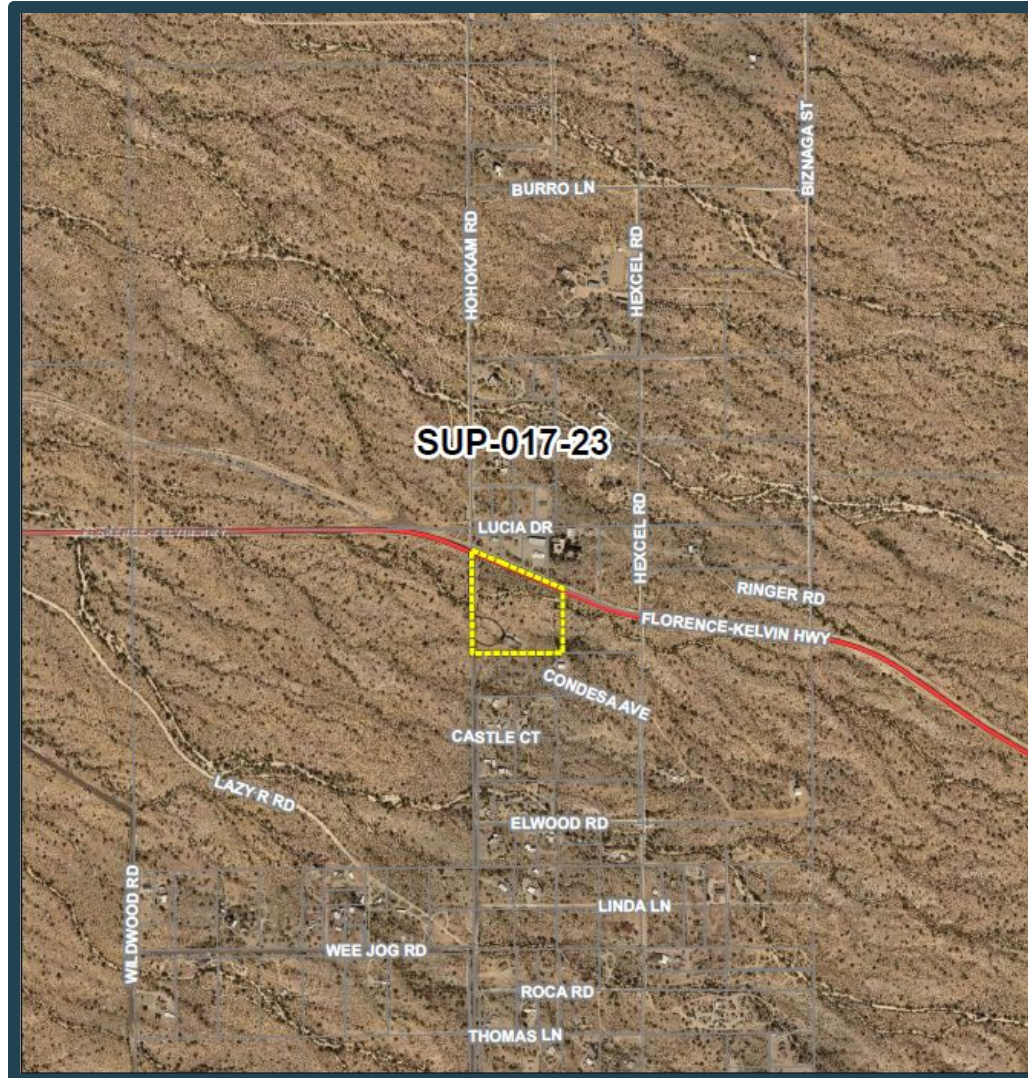


Area Map



PINAL COUNTY

WIDE OPEN OPPORTUNITY

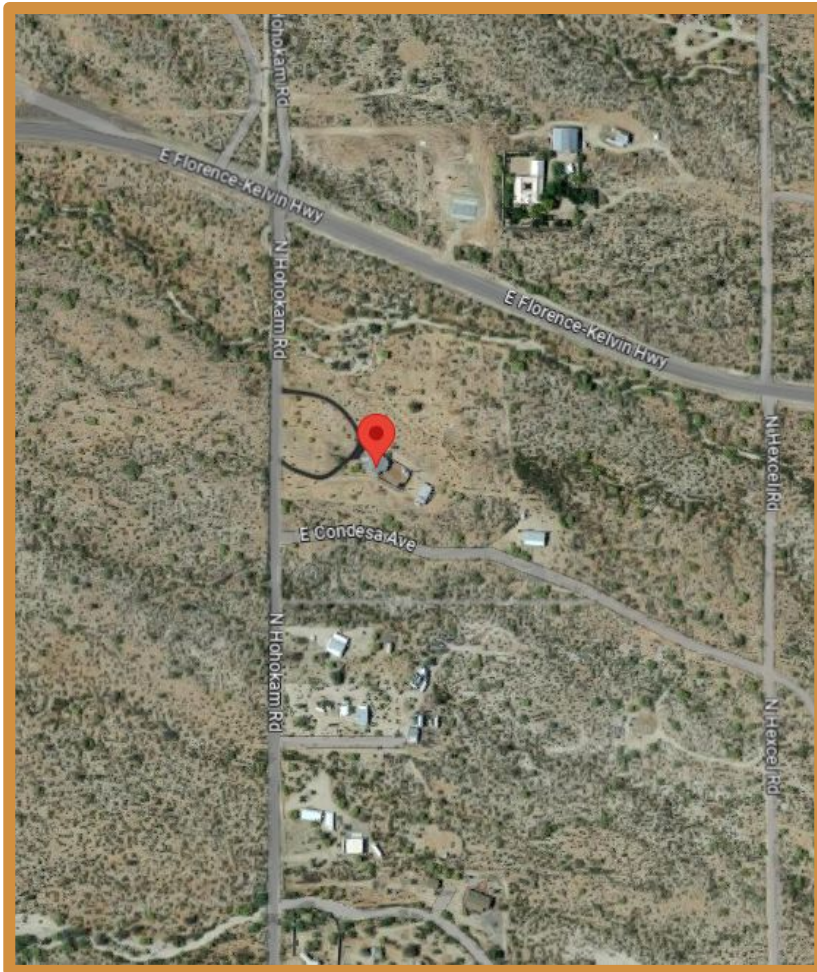


Aerials

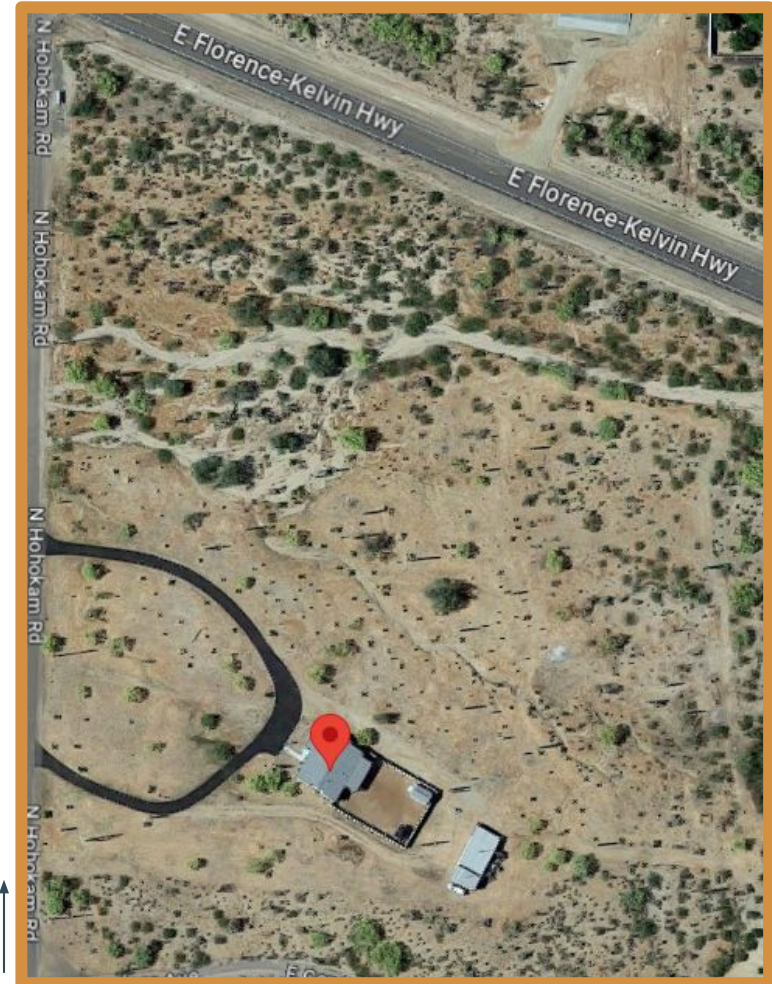


PINAL COUNTY
WIDE OPEN OPPORTUNITY

Surrounding Context



Subject Site



Directionals



Looking East; onto subject site



Looking West

Directionals



PINAL COUNTY

WIDE OPEN OPPORTUNITY



Looking South



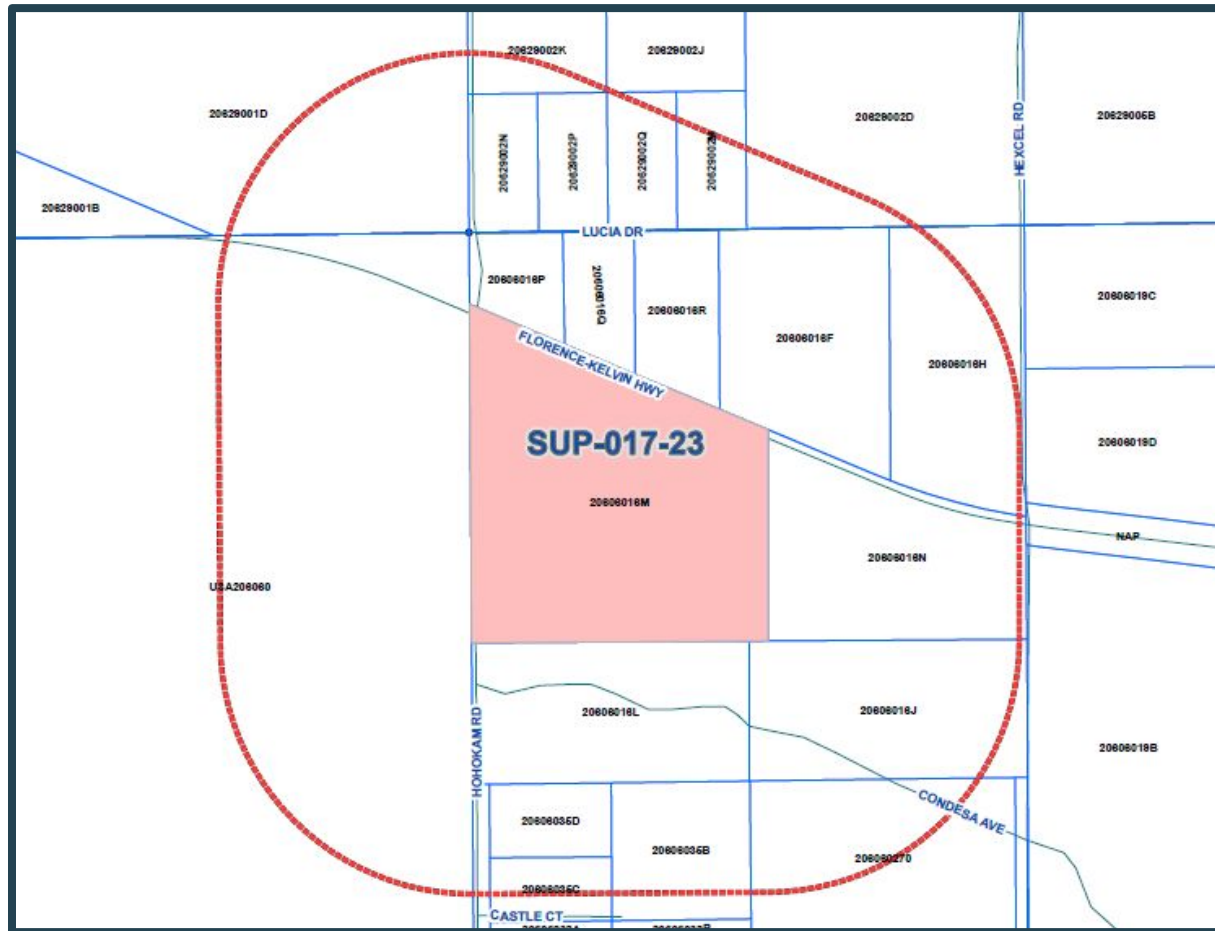
Looking North

Notice Area



PINAL COUNTY

WIDE OPEN OPPORTUNITY



NOH Posting



PINAL COUNTY

WIDE OPEN OPPORTUNITY



PINAL COUNTY
Public Hearings

Case Number: SUP-017-23
Existing Zoning: GR
Proposed Zoning: GR
Acreage: 10.48 Acres

Applicant Name: Vertical Bridge
Applicant Phone Number: 602-426-9500

Case Information Available at Pinal County Planning & Development Services
(520) 866-6442 or www.pinalcountyaz.gov

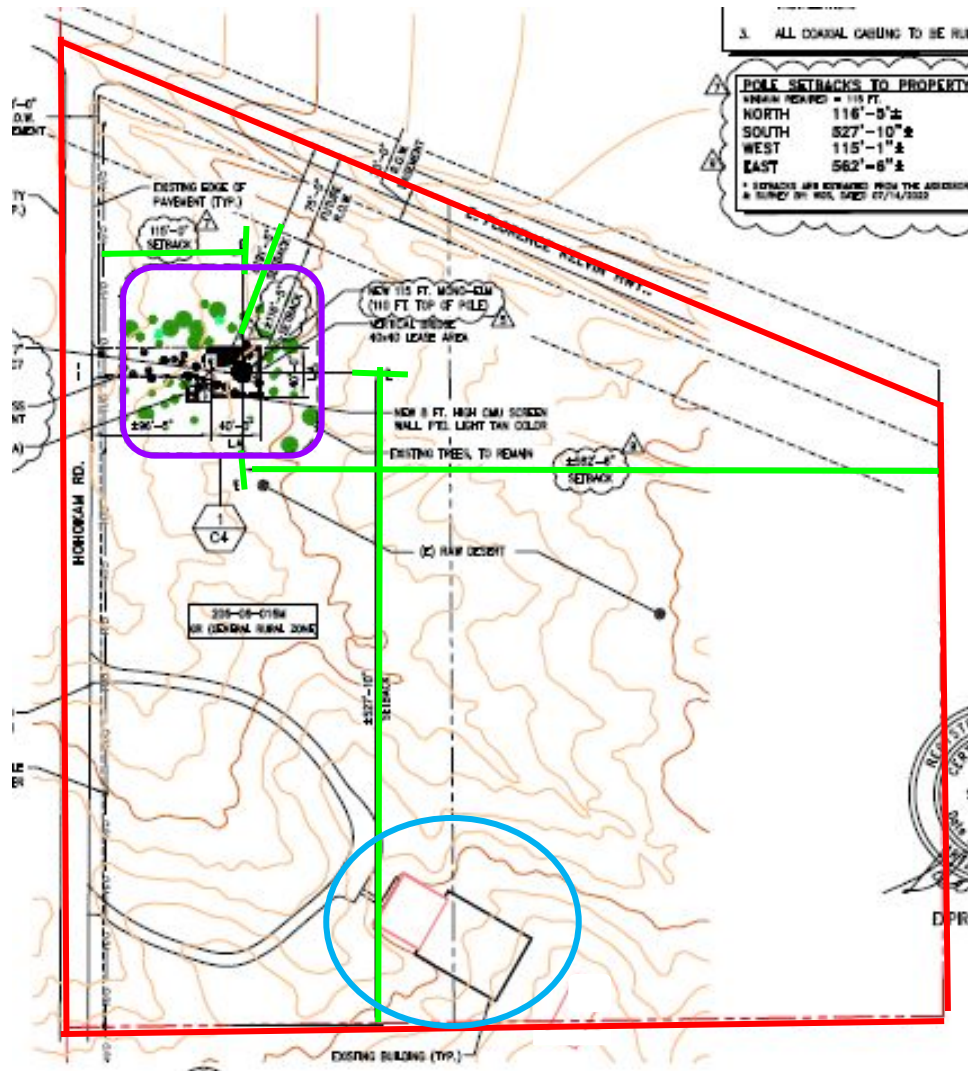
Public Hearing NOTICE
PLANNING & ZONING
PINAL COUNTY
PUBLIC HEARING
10/15/23



Site Plan



PINAL COUNTY
WIDE OPEN OPPORTUNITY



— Property line

Setbacks

— N: 116 feet 5 inches
 — S: 562 feet 6 inches
 — E: 167 feet 7 inches
 — W: 115 feet

— Existing residence area

— Proposed facility area

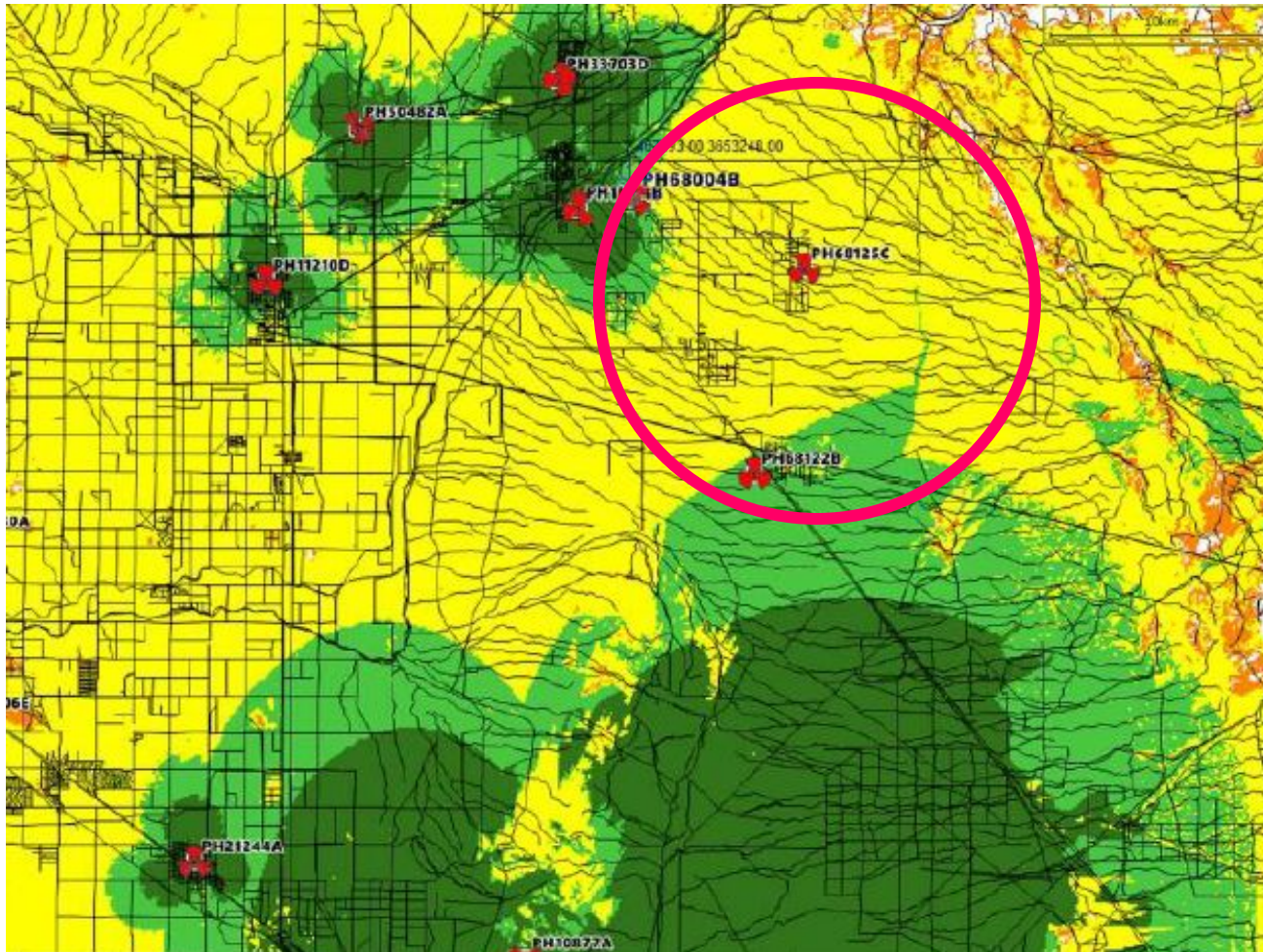


Coverage Map (without)



PINAL COUNTY

WIDE OPEN OPPORTUNITY

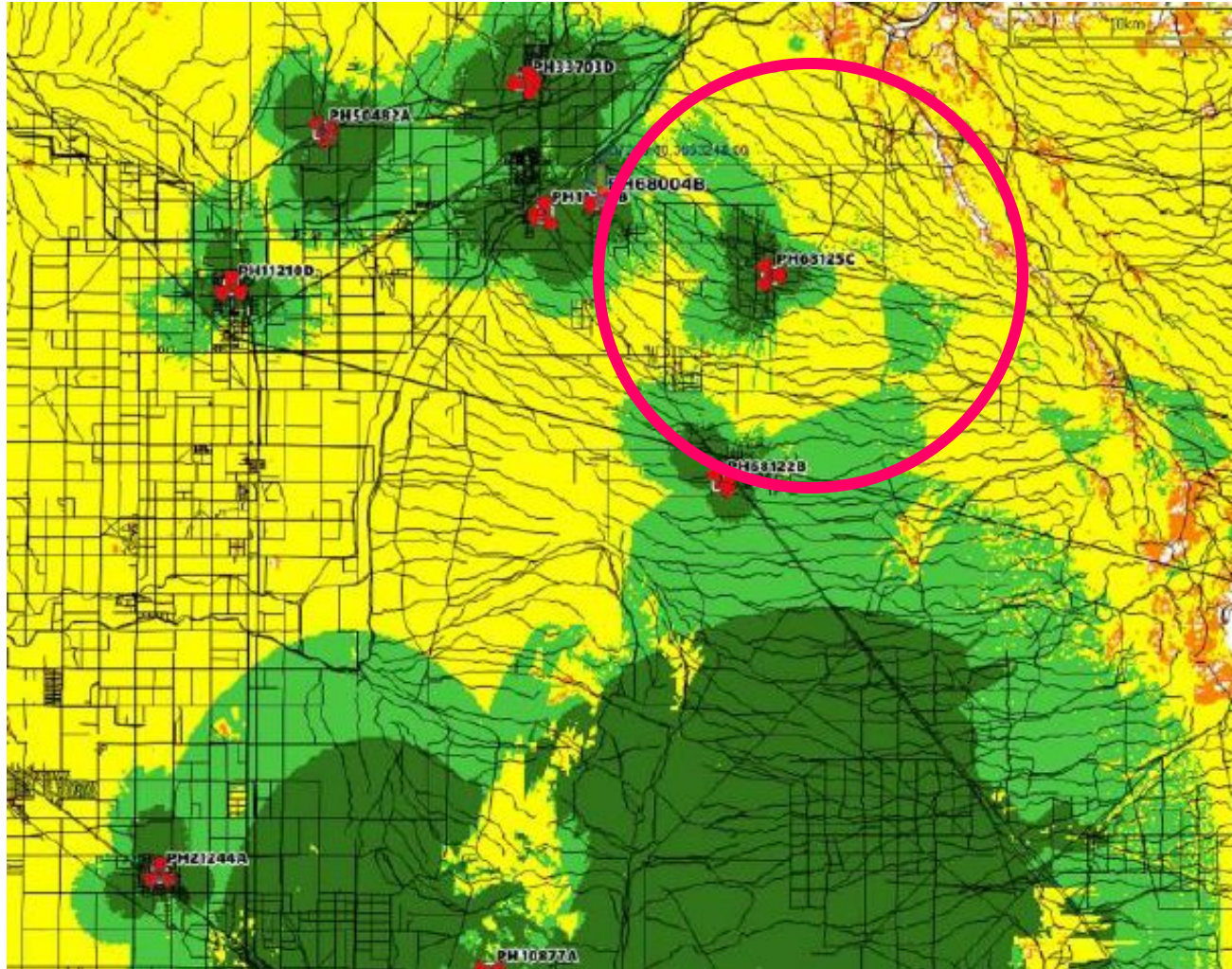


Coverage Map (with)



PINAL COUNTY

WIDE OPEN OPPORTUNITY



Items of Consideration

- Coverage will increase significantly for the area if the SUP is granted.
- Tower is designed to allow future co-locations, reducing the need of additional new facilities.
- Applicant has submitted all necessary documentation required of SUP process.
- No adverse impacts have been identified by County staff.
- Applicant will comply with all development standards required of an SUP/WCF and additional standards as stated in stipulations.
- Two (2) oppositions have been provided to Staff; no new opposition since PnZ face.
 - *Harmful emissions/radiation from cell tower*
 - Must abide by all standards and guidelines set forth by FAA & FCC which includes RF exposure standards permissible
 - Within 30 days of BOS approval, applicant must provide R.F. Engineer certification for validation
 - *Disturbance to rural nature*
 - A tower at this height, and offering future collocations reduces the need for additional towers in the area; supportive in keeping the rural environment
 - Aids in the County's intent to ensure health and safety as connectivity is enhanced for emergency services calls

Recommendation



PINAL COUNTY

WIDE OPEN OPPORTUNITY

- Planning and Zoning Commission made a recommendation of **approval** with fifteen (15) stipulations.

Thank you!



PINAL COUNTY

WIDE OPEN OPPORTUNITY

- Staff is open to discussion as necessary.
- Questions?... 😊