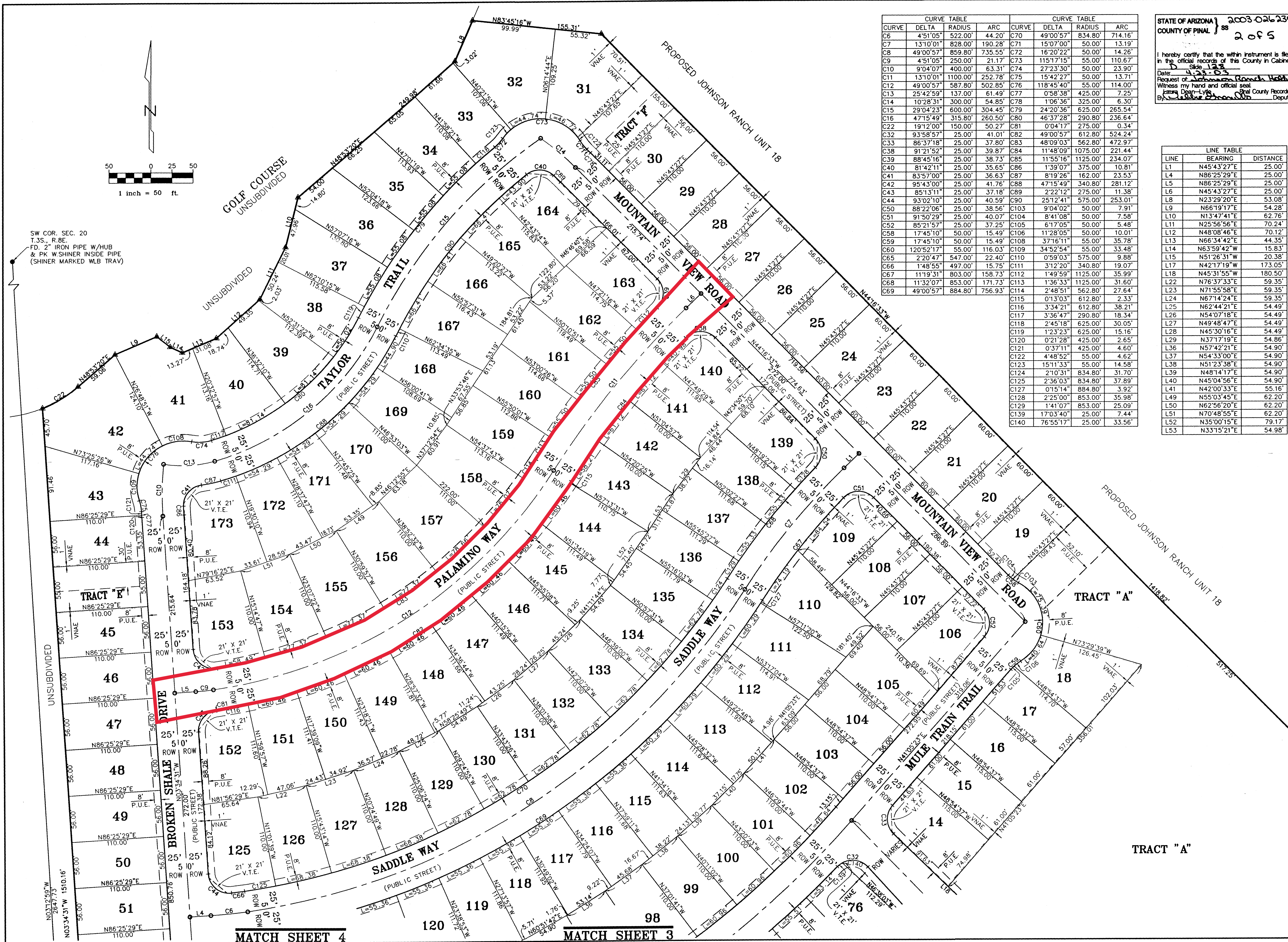


SW COR. SEC. 20
T.35S., R.8E.
FD. 2" IRON PIPE W/HUB
& PK W/SHINER INSIDE PIPE
(SHINER MARKED WLB TRAV)



CURVE TABLE				CURVE TABLE			
CURVE	DELTA	RADIUS	ARC	CURVE	DELTA	RADIUS	ARC
C6	4°51'05"	522.00'	44.20'	C70	49°00'57"	834.80'	714.16'
C7	13°10'01"	828.00'	190.28'	C71	15°07'00"	50.00'	13.19'
C8	49°00'57"	859.80'	735.55'	C72	16°20'22"	50.00'	14.26'
C9	4°51'05"	250.00'	21.17'	C73	11°57'15"	55.00'	11.07'
C10	9°04'07"	400.00'	63.31'	C74	27°23'30"	50.00'	23.90'
C11	13°10'01"	1100.00'	252.78'	C75	15°42'27"	50.00'	13.71'
C12	49°00'57"	587.80'	502.85'	C76	11°45'40"	55.00'	11.40'
C13	25°42'59"	137.00'	61.49'	C77	0°58'38"	425.00'	7.25'
C14	10°28'31"	300.00'	54.85'	C78	1°06'36"	325.00'	6.30'
C15	29°04'23"	600.00'	304.45'	C79	24°20'36"	625.00'	265.54'
C16	47°15'49"	315.80'	260.50'	C80	46°37'28"	290.80'	236.64'
C22	19°12'00"	150.00'	50.27'	C81	0°04'17"	275.00'	0.34'
C32	93°58'57"	25.00'	41.01'	C82	49°00'57"	612.80'	524.24'
C33	86°37'18"	25.00'	37.80'	C83	48°09'03"	562.80'	472.97'
C38	91°21'52"	25.00'	39.87'	C84	11°48'09"	1075.00'	221.44'
C39	88°45'16"	25.00'	38.73'	C85	11°55'16"	1125.00'	234.07'
C40	81°42'11"	25.00'	35.65'	C86	1°39'07"	375.00'	10.81'
C41	83°57'00"	25.00'	36.63'	C87	8°19'26"	162.00'	23.53'
C42	95°43'00"	25.00'	41.76'	C88	47°15'49"	340.80'	281.12'
C43	85°13'11"	25.00'	37.18'	C89	2°22'12"	275.00'	11.38'
C44	93°02'10"	25.00'	40.59'	C90	25°12'41"	575.00'	253.01'
C50	88°22'06"	25.00'	38.56'	C103	9°04'02"	50.00'	7.91'
C51	91°50'29"	25.00'	40.07'	C104	8°41'08"	50.00'	7.58'
C52	85°21'57"	25.00'	37.25'	C105	6°17'05"	50.00'	5.48'
C58	17°45'10"	50.00'	15.49'	C106	11°28'05"	50.00'	10.01'
C59	17°45'10"	50.00'	15.49'	C108	37°16'11"	55.00'	35.78'
C60	120°52'17"	55.00'	116.03'	C109	34°52'54"	55.00'	33.48'
C65	2°20'47"	547.00'	22.40'	C110	0°59'03"	575.00'	9.88'
C66	1°48'55"	497.00'	15.75'	C111	31°2'20"	340.80'	19.07'
C67	11°19'31"	803.00'	158.73'	C112	1°49'59"	1125.00'	35.99'
C68	11°32'07"	853.00'	171.73'	C113	1°36'33"	1125.00'	31.60'
C69	49°00'57"	884.80'	756.93'	C114	2°48'51"	562.80'	27.64'
				C115	0°13'03"	612.80'	2.33'
				C116	3°34'21"	612.80'	38.21'
				C117	3°36'47"	290.80'	18.34'
				C118	2°45'18"	625.00'	30.05'
				C119	1°23'23"	625.00'	15.16'
				C120	0°21'28"	425.00'	2.65'
				C121	0°37'11"	425.00'	4.60'
				C122	4°48'52"	55.00'	4.62'
				C123	15°11'33"	55.00'	14.58'
				C124	2°10'31"	834.80'	31.70'
				C125	2°36'03"	834.80'	37.89'
				C127	0°15'14"	884.80'	3.92'
				C128	2°25'00"	853.00'	35.98'
				C129	1°41'07"	853.00'	25.09'
				C139	17°03'40"	25.00'	7.44'
				C140	7°55'17"	25.00'	33.56'

STATE OF ARIZONA } 2003-026234
COUNTY OF PINAL } ss 2 of 5
I hereby certify that the within instrument is filed
in the official records of this County in Cabinet
3, Side 128
Date: 4-23-03
Request of: Johnson Ranch Holdings
Witness my hand and official seal
Laura Dean-Lyle, Pinal County Recorder
By: [Signature] Deputy

LINE TABLE		
LINE	BEARING	DISTANCE
L1	N45°43'27"E	25.00'
L4	N86°25'29"E	25.00'
L5	N86°25'29"E	25.00'
L6	N45°43'27"E	25.00'
L8	N23°29'20"E	53.08'
L9	N66°19'17"E	54.28'
L10	N13°47'41"E	62.76'
L11	N25°56'56"E	70.24'
L12	N48°08'46"E	70.12'
L13	N66°34'42"E	44.35'
L14	N63°59'42"W	15.83'
L15	N51°26'31"W	20.38'
L17	N42°17'19"W	173.05'
L18	N45°31'55"W	180.50'
L22	N76°37'33"E	59.35'
L23	N71°55'58"E	59.35'
L24	N67°14'24"E	59.35'
L25	N62°44'21"E	54.49'
L26	N54°07'18"E	54.49'
L27	N49°48'47"E	54.49'
L28	N45°30'16"E	54.49'
L29	N37°17'19"E	54.86'
L36	N57°42'21"E	54.90'
L37	N54°33'00"E	54.90'
L38	N51°23'38"E	54.90'
L39	N48°14'17"E	54.90'
L40	N45°04'56"E	54.90'
L41	N42°00'33"E	55.16'
L49	N65°03'45"E	62.20'
L50	N62°56'20"E	62.20'
L51	N70°48'55"E	62.20'
L52	N35°00'15"E	79.17'
L53	N33°15'21"E	54.98'



JOHNSON RANCH UNIT 17
FINAL PLAT



WOOD/PATEL
CIVIL ENGINEERS
HYDROLOGISTS
LAND SURVEYORS
CONSTRUCTION MANAGERS

1855 N. Stapley Dr.
Mesa, AZ 85203

Phone: (480) 834-3300
Fax: (480) 834-3320

CHECKED BY: TRG/SAN/KLP
CAD TECHNICIAN: KK/MTM/SAN
SCALE: 1"=50'
DATE: 03-04-03
JOB NUMBER: 011481
SHEET: 2 OF 5